

Paper Plain
meet. collaborate. belong.

SMÅLL
SHIFT

Tech-enabled community building

Paper Plain pilot

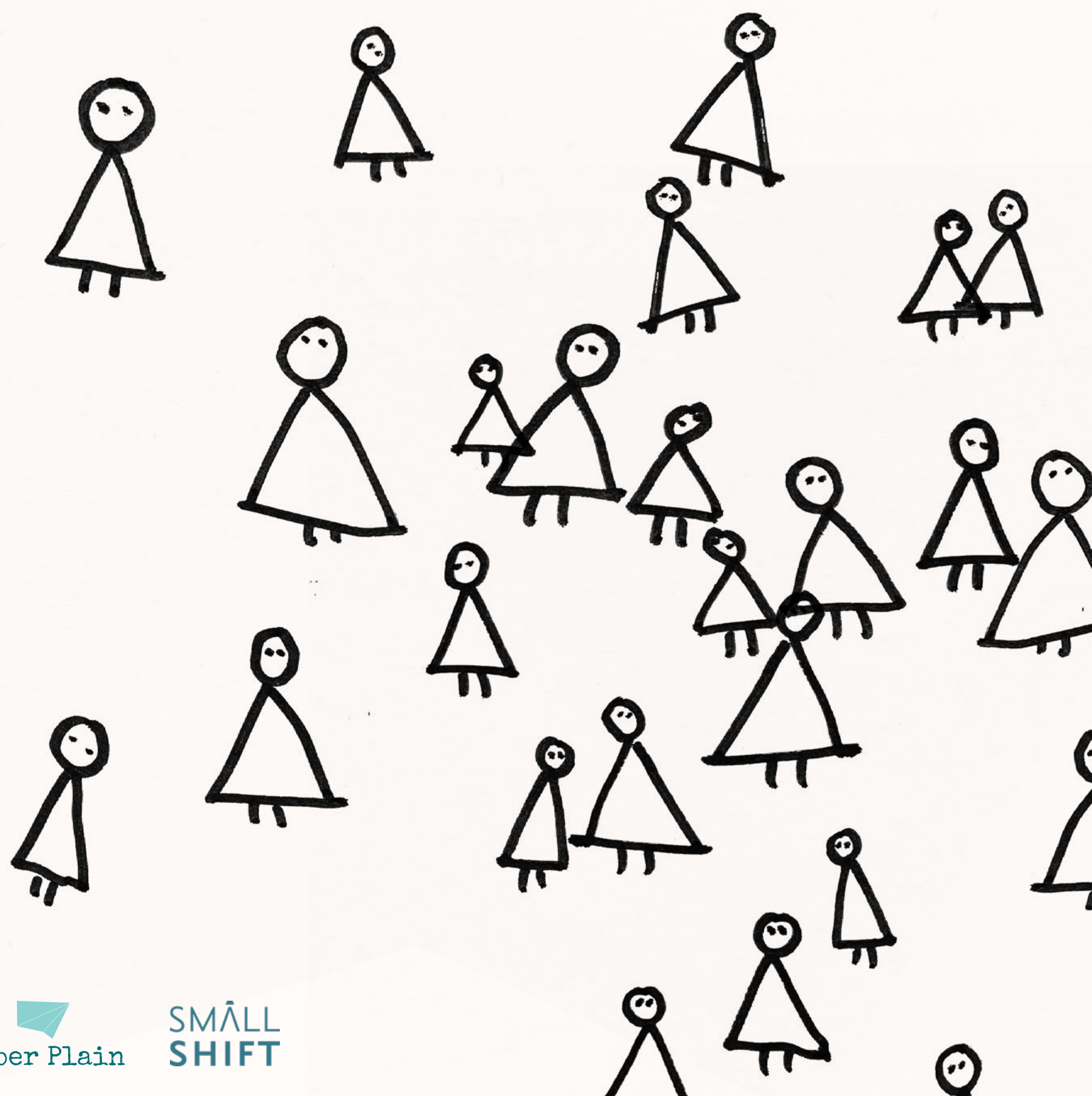
6 Nov 2019

Julia Suh

@juliasuh_

www.paperplain.co

www.smallshift.com.au

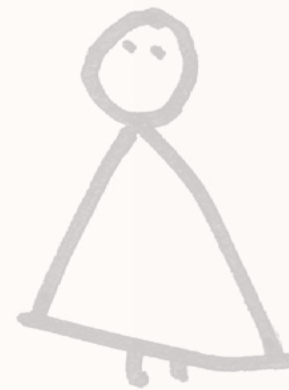




Money



Health



Disconnection to benefit



Confidence



Access



Permission

Time



Fear



Disconnection to problem



Influence

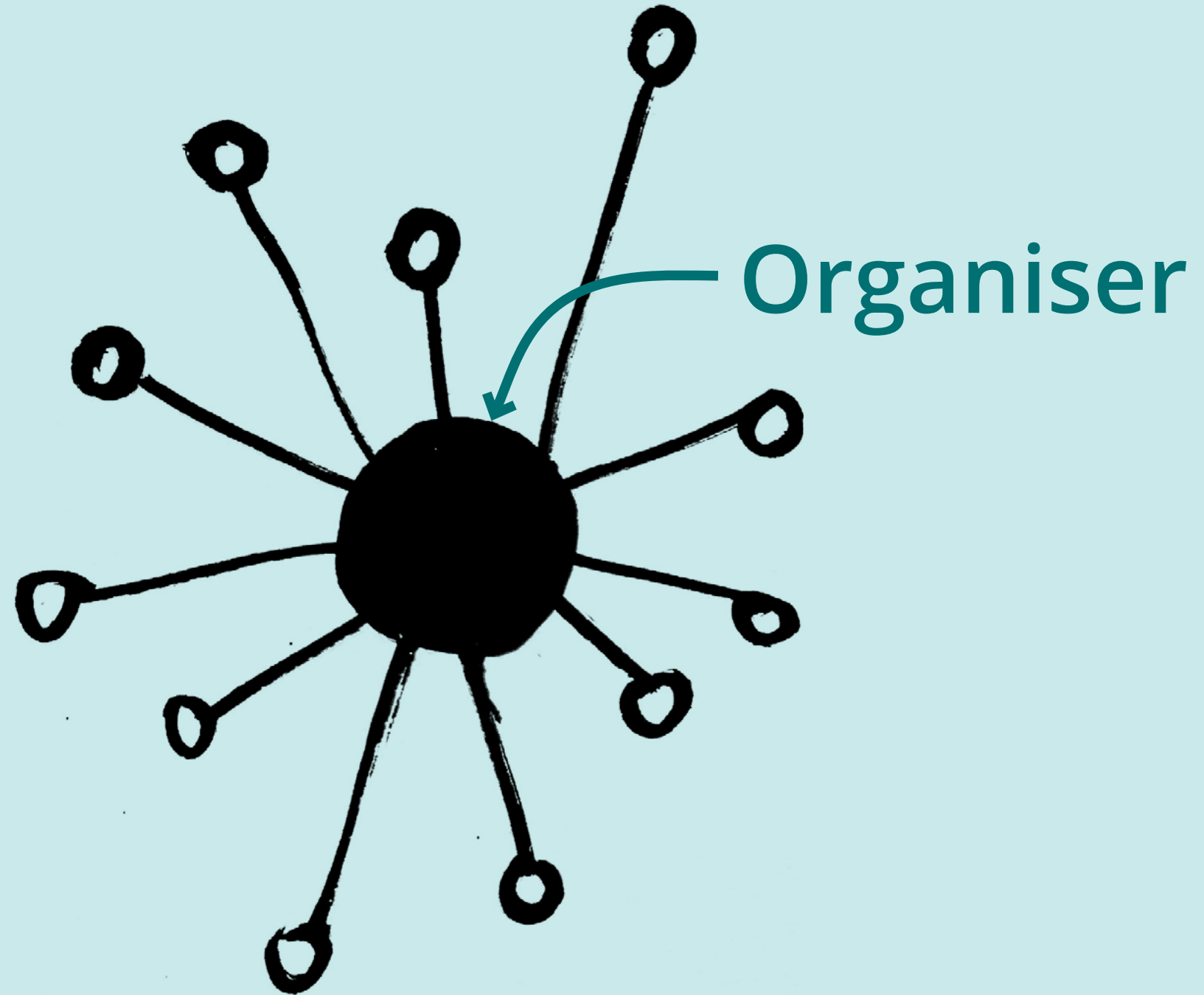


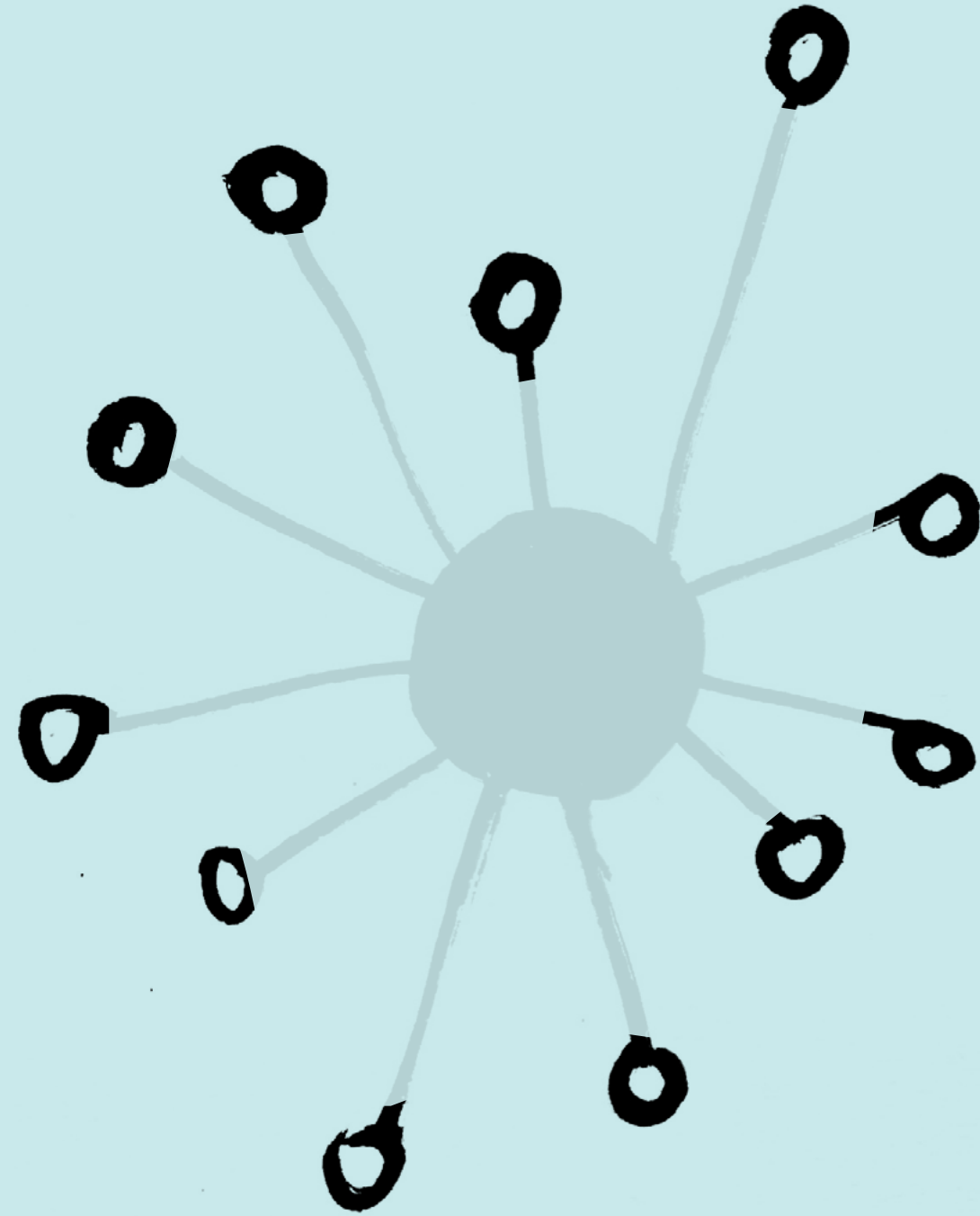
Culture



Language

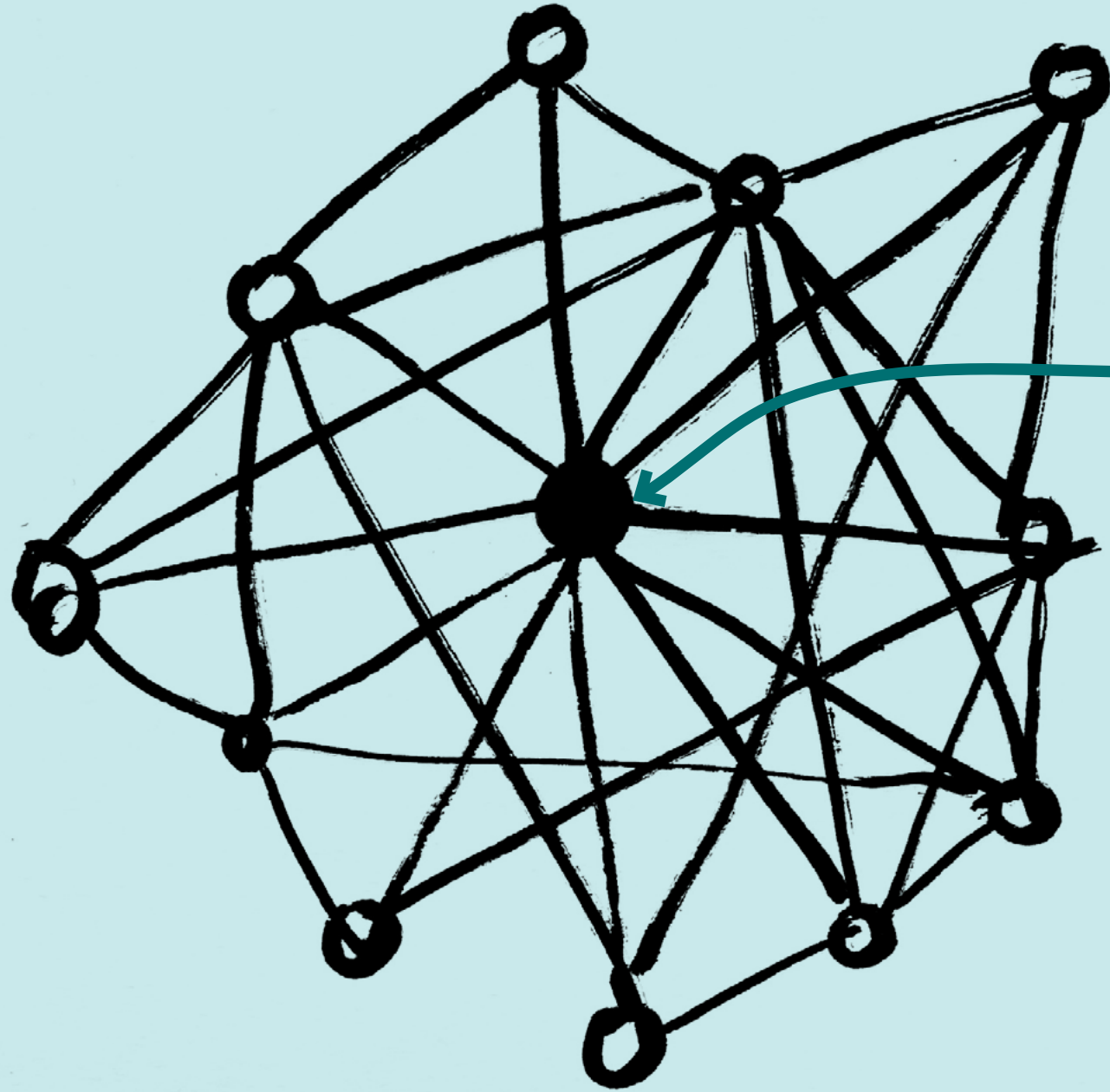




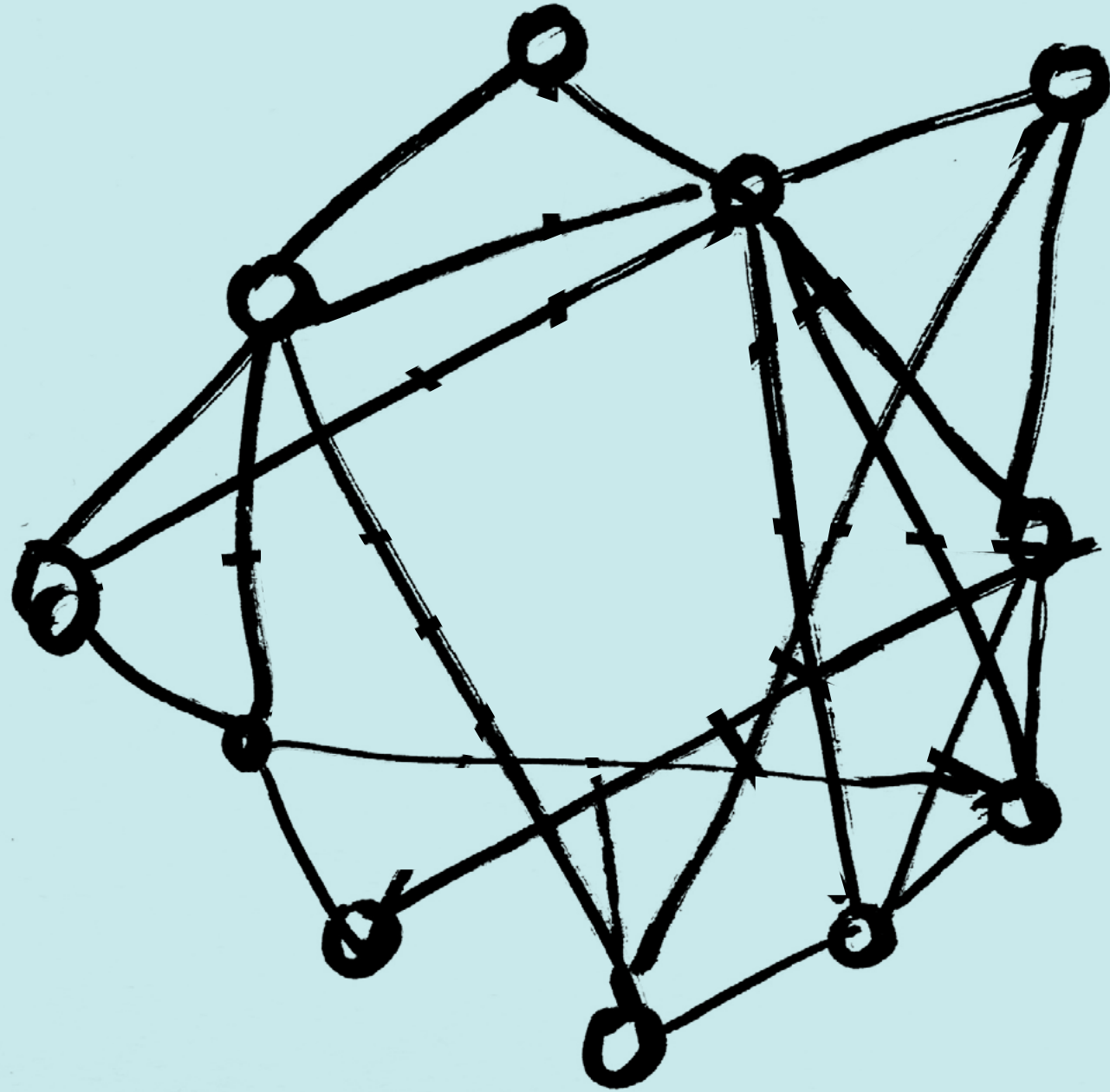




How do you
want to do
this?



Organiser

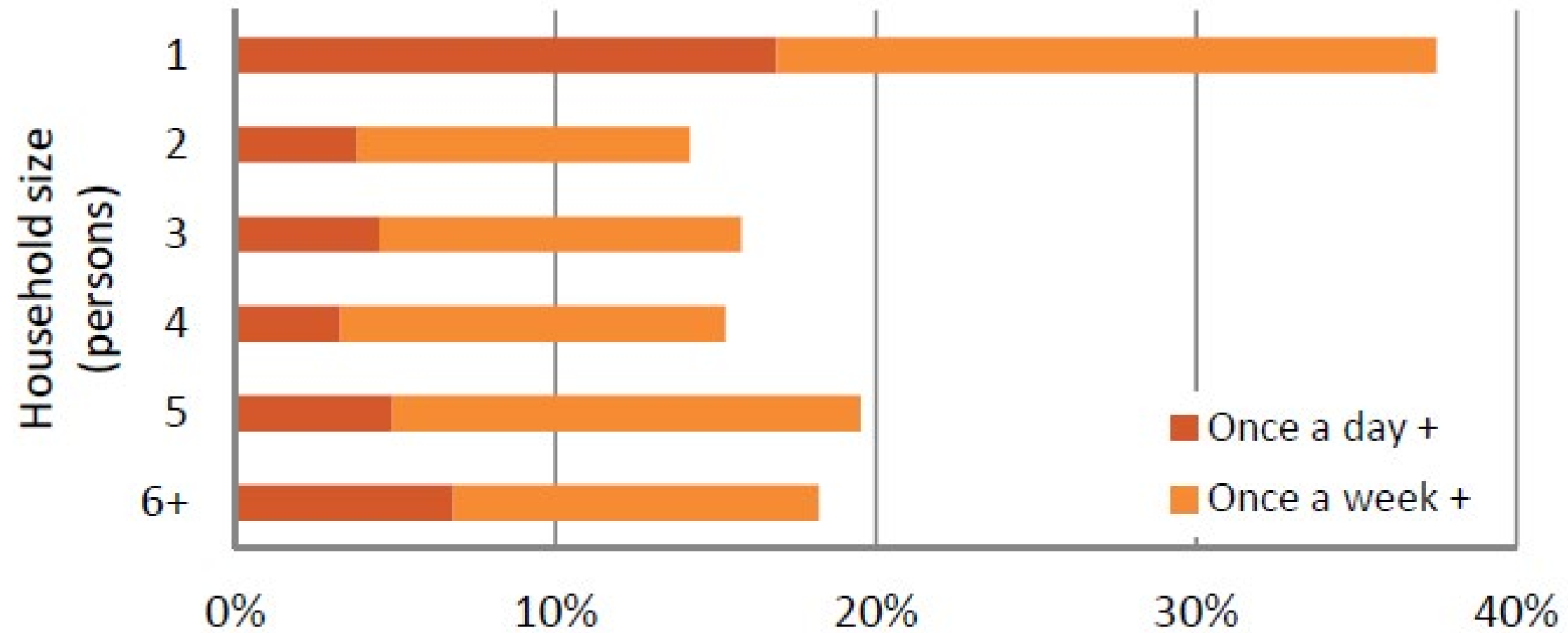


When people care for one another, they take an interest in their welfare; and this is a vastly superior form of welfare than that obtained by governmental programs. It is based on mutual consent, genuine empathy, and real understanding of peoples' situations.

Nobody is a “case”.

Oldenburg, Ray. *The Great Good Place: Cafes, Coffee Shops, Bookstores, Bars, Hair Salons, and Other Hangouts at the Heart of a Community*, 1989

Figure 5: Frequency of loneliness and household size, Australia, 2009



Franklin and Tranter, 2011, as cited in
Jane-Frances Kelly of Grattan Institute, 2011



Paper Plain  SMALL SHIFT





SEDFORTH COMMUNITY CHALKBOARD

#Our Sedforth

Ask Grassroots Garden behind you for chalk!

Yeeees!

The Champion

Sure

The Contributor

Eh

The Indifferent

Nah

The Naysayer





NASCFC
CHAMPION
D. J. J.

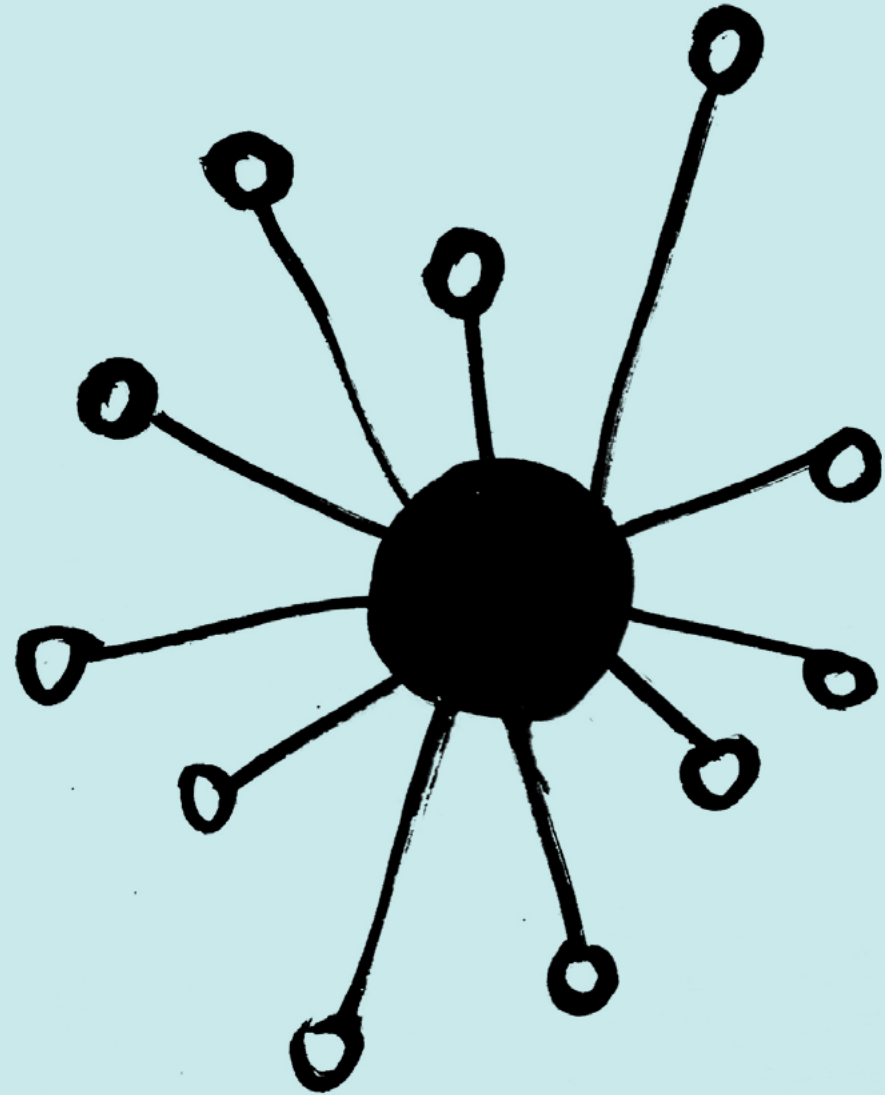
 Paper Plain
SMALL
SHIFT

Photo: Illawarra Mercury

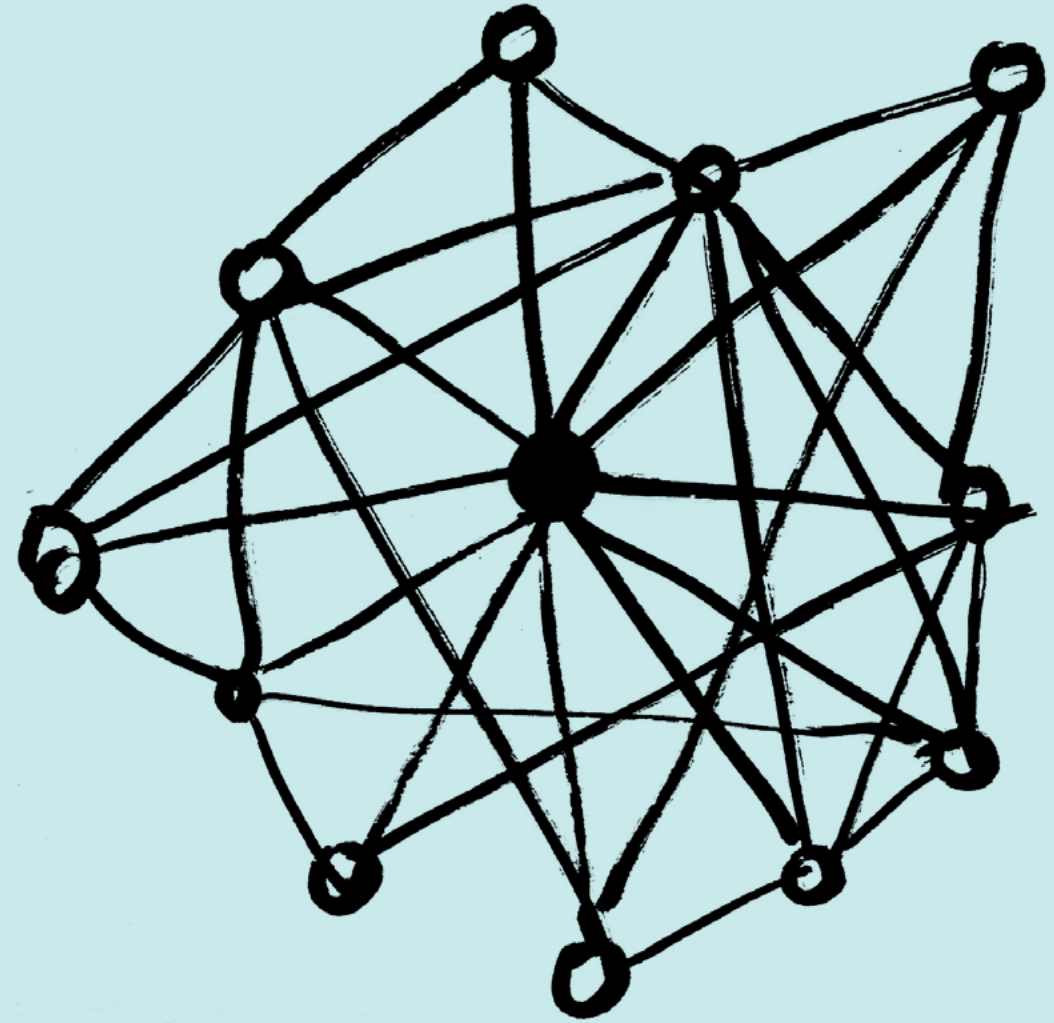


Courage





Centralised



Distributed



shared a post.

15 May at 17:35

Hi Community ,

We are giving away 2 free tickets to our Annual Gala Event at The Club . To Enter please go to our page on how to Enter

Good Luck 🍀



North Manly

Looking for a cleaner

Can anyone recommend a good reasonably priced cleaner around North Manly?
Thanks.



16 May at 20:33

Metal King Single bed and Mattress

\$210

📍 2557

Black metal King Single bed frame (one end capping missing from bed head)

with/or without mattress.

Mattress has no stains or rips, well looked after.

PICK UP ONLY

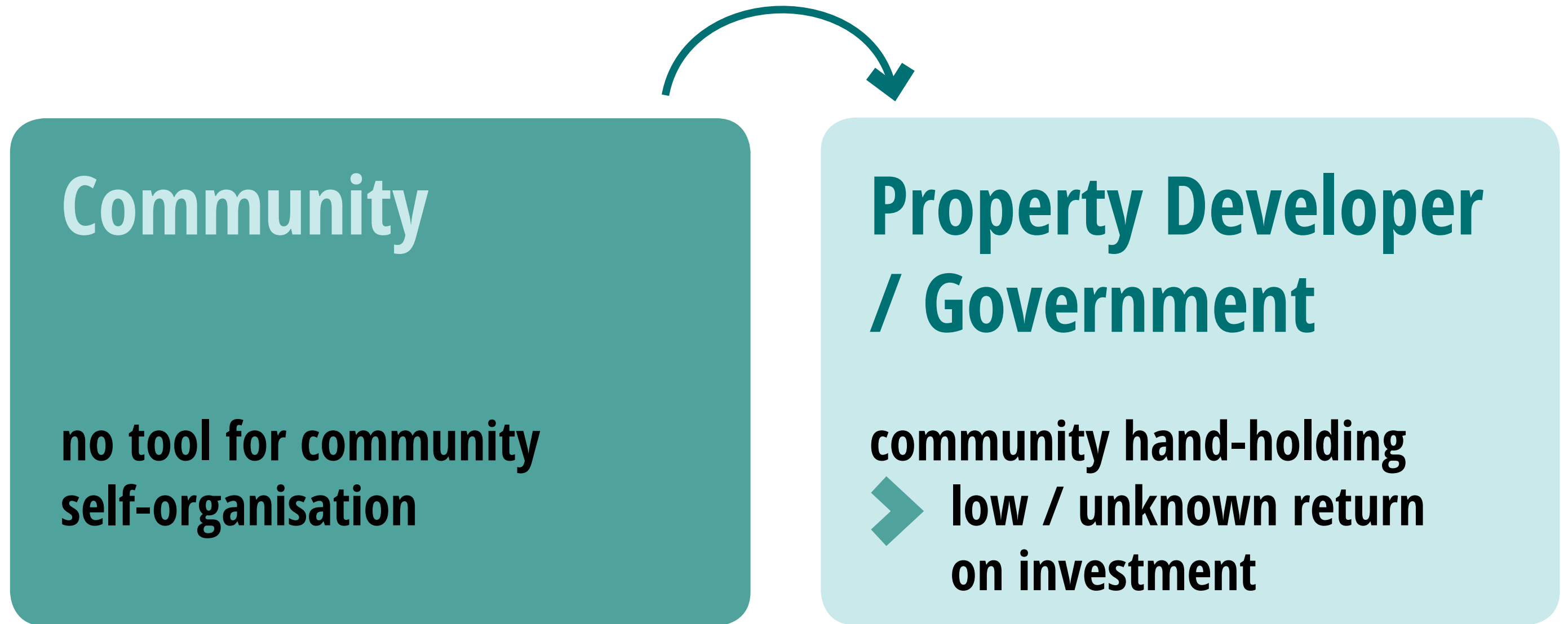
(Accessories in pictures not included)... [See more](#)



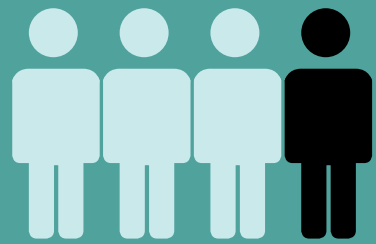
Paper Plain

SMALL
SHIFT

The 2-sided problem:



Problem for community: no tool for community self-organisation



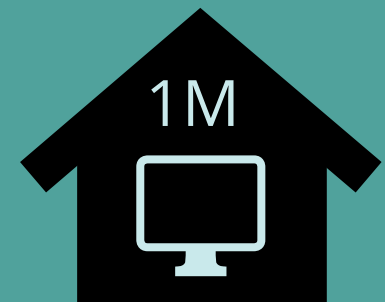
Loneliness
epidemic



Contextual
understanding

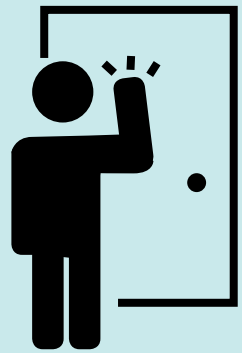


Broken
communication



Invisible local
products & services

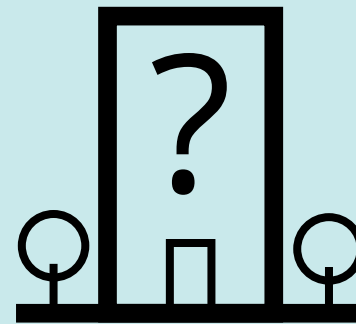
Problem for property developer / government: low / unknown return on investment



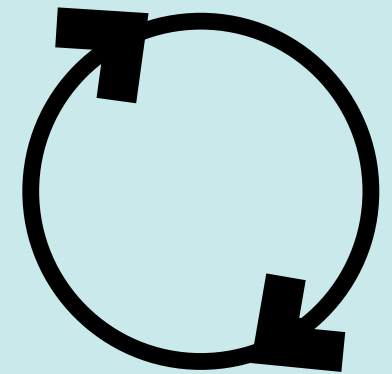
Inefficient
process



Community
/marketing

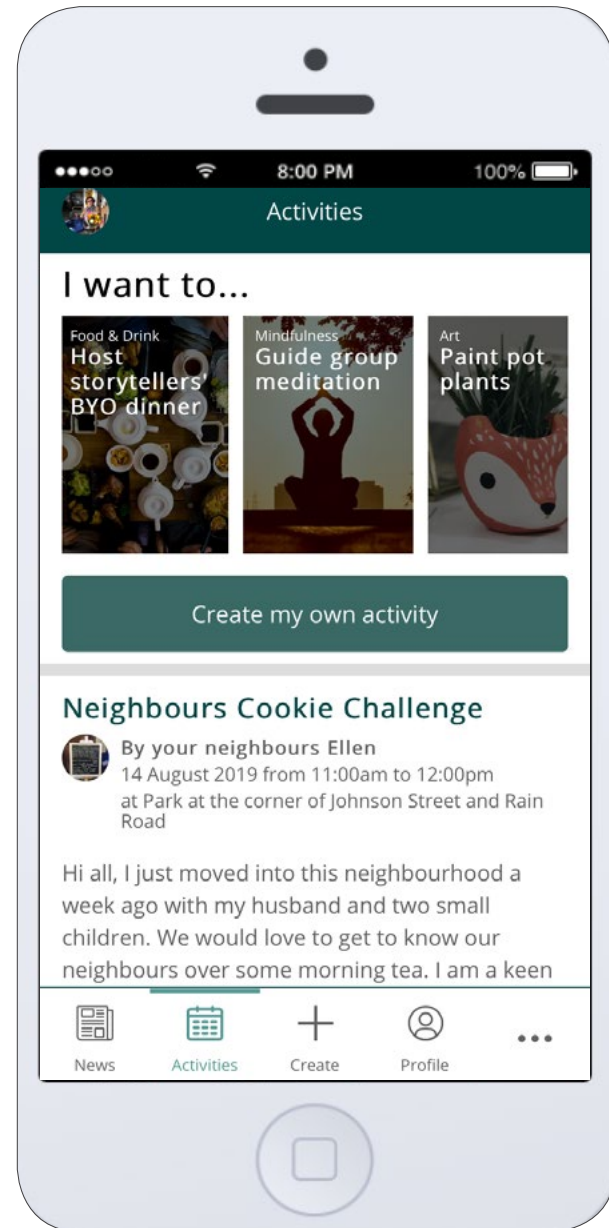


Build the
wrong thing

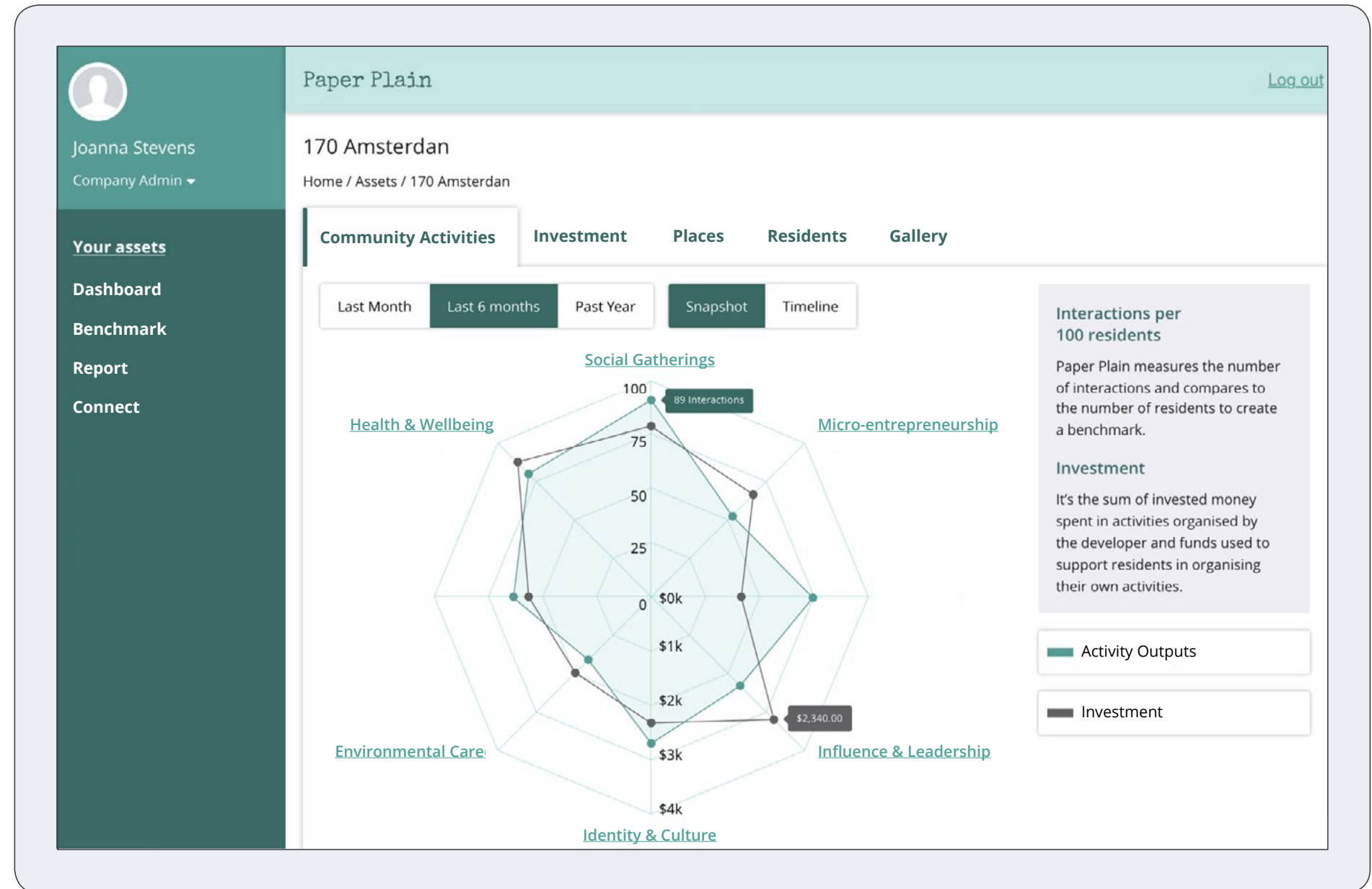


Repeat >>
no evidence,
no benchmarking

Paper Plain



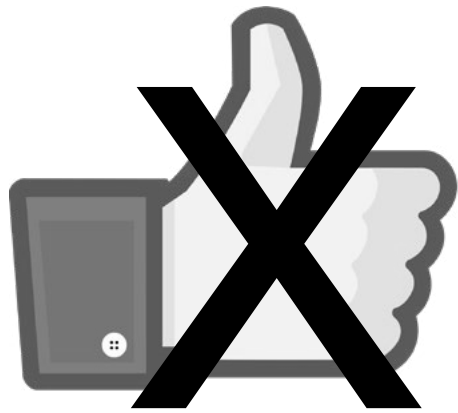
Residents



Property Developer / Government



Finding our own metrics



- Activity Acquisition Cost (AAC)
- Community Leadership Sustainability Rate (CLSR)

TOGETHER WITH MY NEIGHBOURS
WE HAVE...

Looking for actions and traction, not just perceptions and ideas

Gone for
walks
around the
neighbourhood

11am
HOUR

HELP
NEIGHBORS
JOB'S

WALK
DOGS.

B'DAY
PARTY

Community
Garden



1. Free to choose

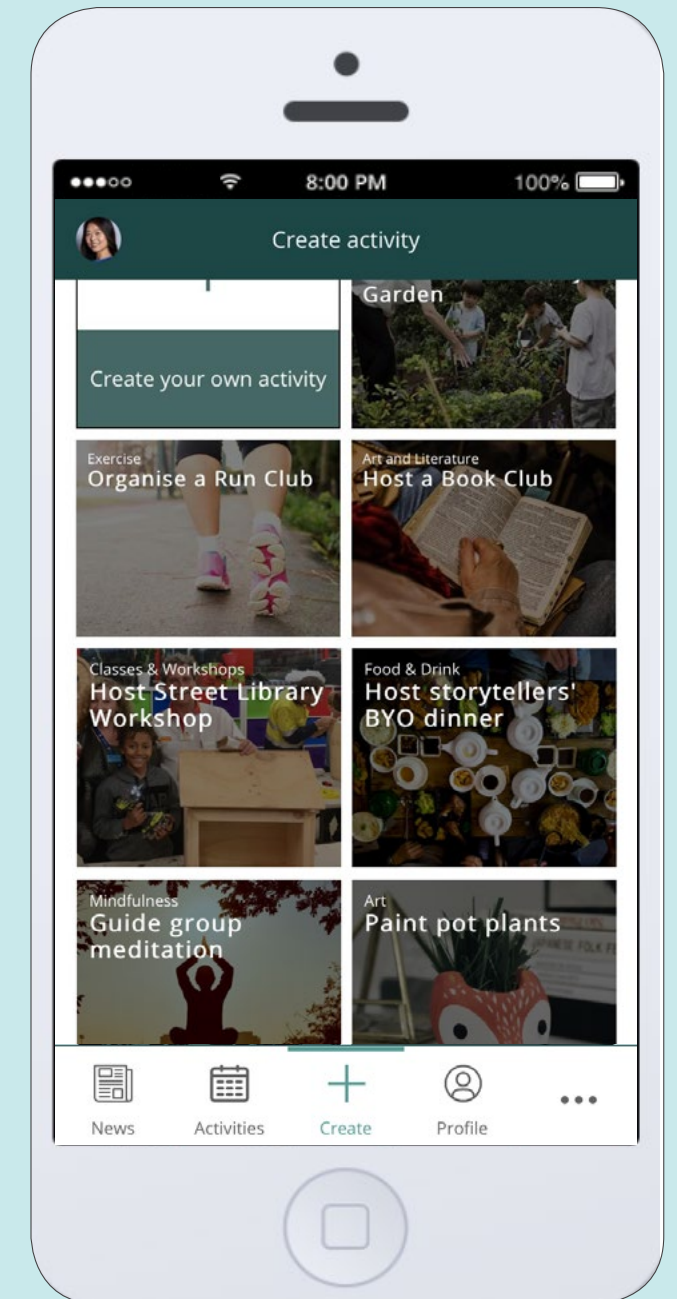


Photo and project by Small Shift

Paper Plain

SMALL
SHIFT



2.

Achievable task

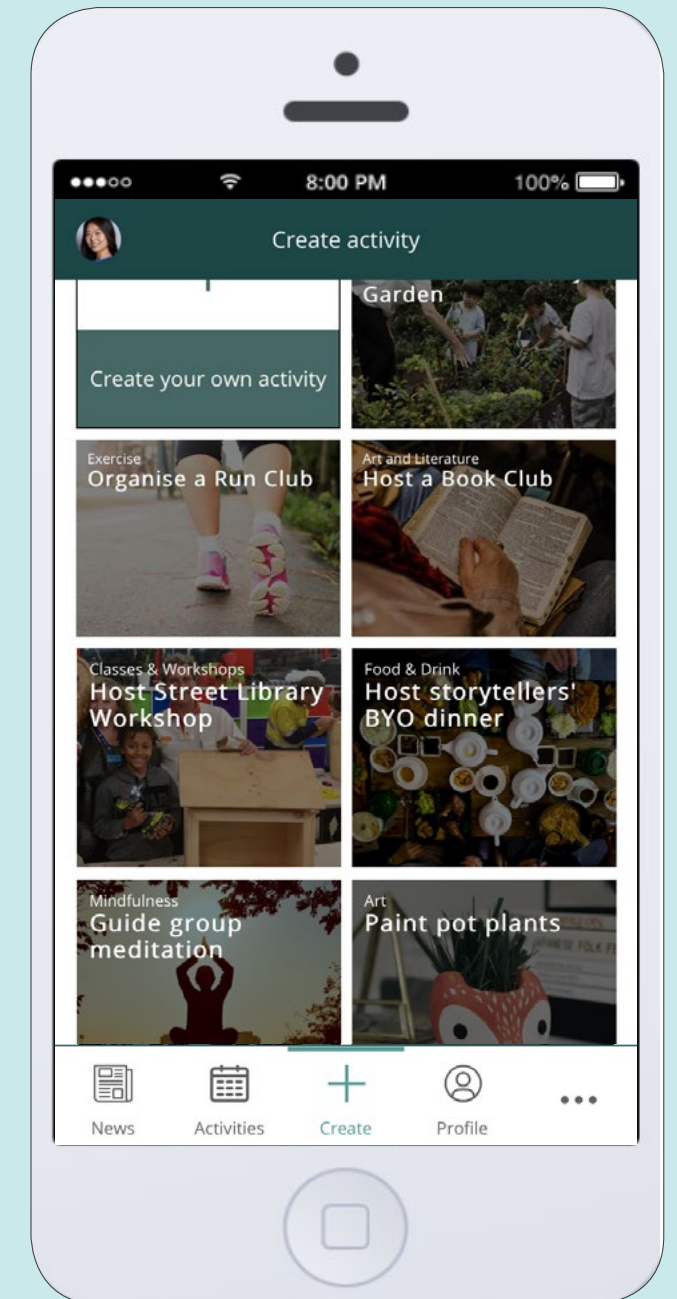


Photo and project by Small Shift


Paper Plain

SMÅLL
SHIFT



Photo and project by Small Shift

Paper Plain
SMÅLL
SHIFT

3. Collaborators

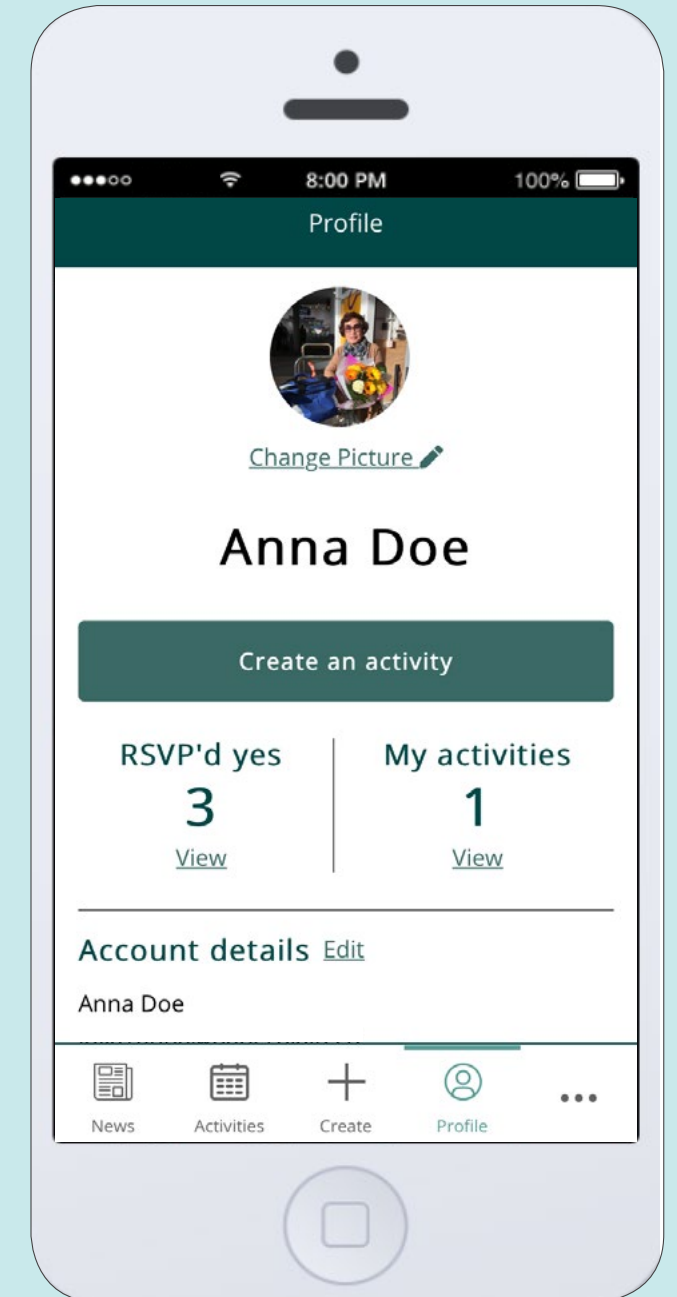
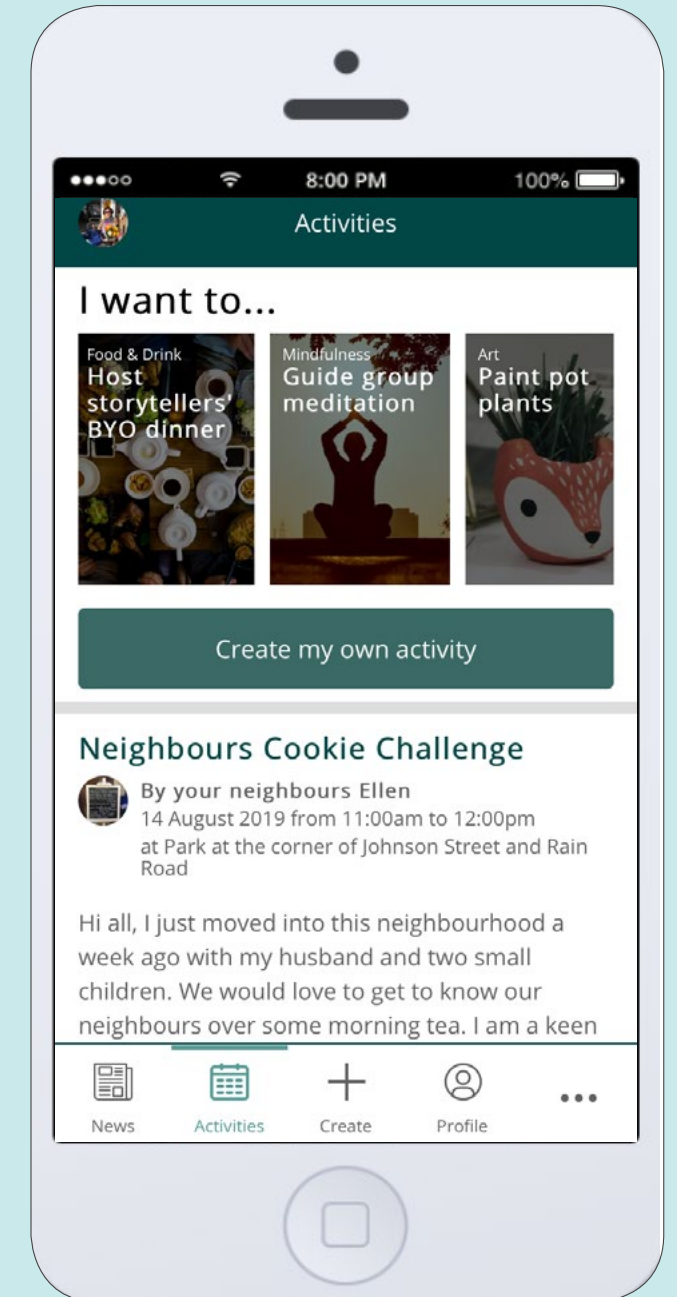




Photo and project by Small Shift

Paper Plain **SMALL SHIFT**

4. See/feel impact



Reimagining Ki

Locals work to restore pride and respect into one of

EMILY FESZCZUK

A group of locals from Kingswood have banded together to transform public spaces in their neighbourhood and breathe life into the once-vibrant community.

The 'Do It Ourselves' project uses creativity to engage the community.

Proud Kingswood local Robert Rayner said there is a need for projects in the area.

"I am a retired minister of the church and needed something to do with my time so when I met Julia Suh, who runs Small Shift and gets grants from Council, I had some ideas," Mr Rayner said.

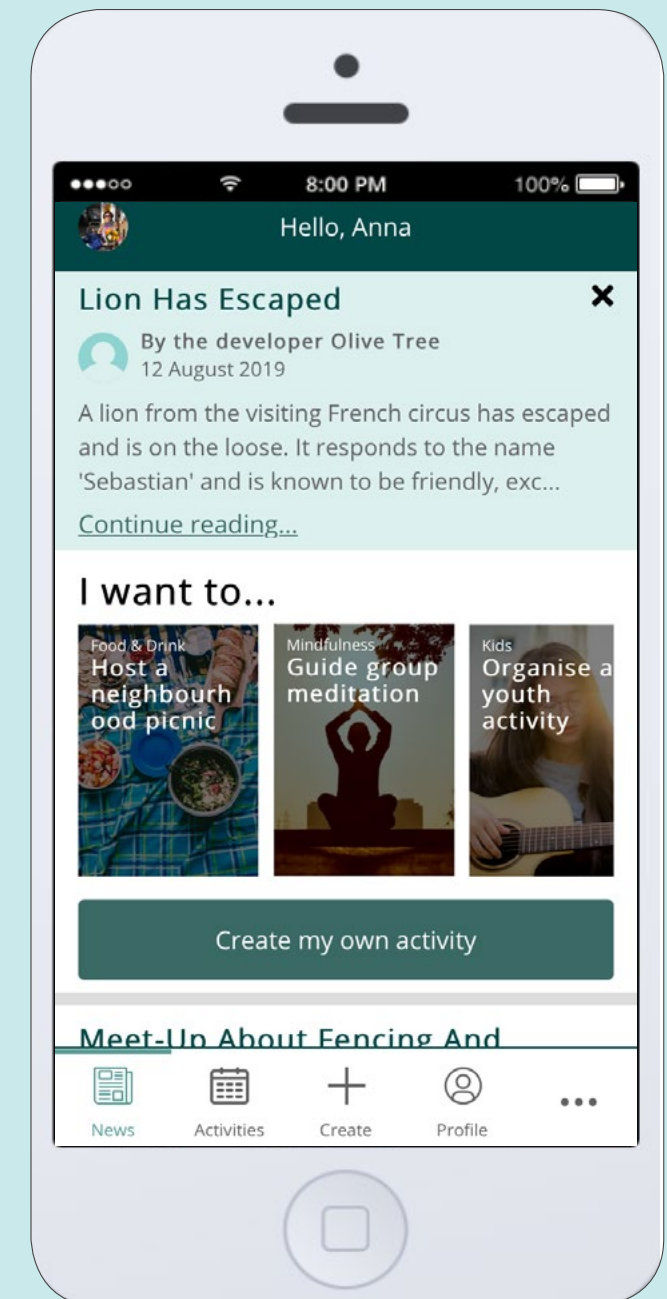
"I've been living here 23 years and it was a nice, quiet area but now there are some issues and we need to care more about the community and make the area better."

Article by Western Weekender

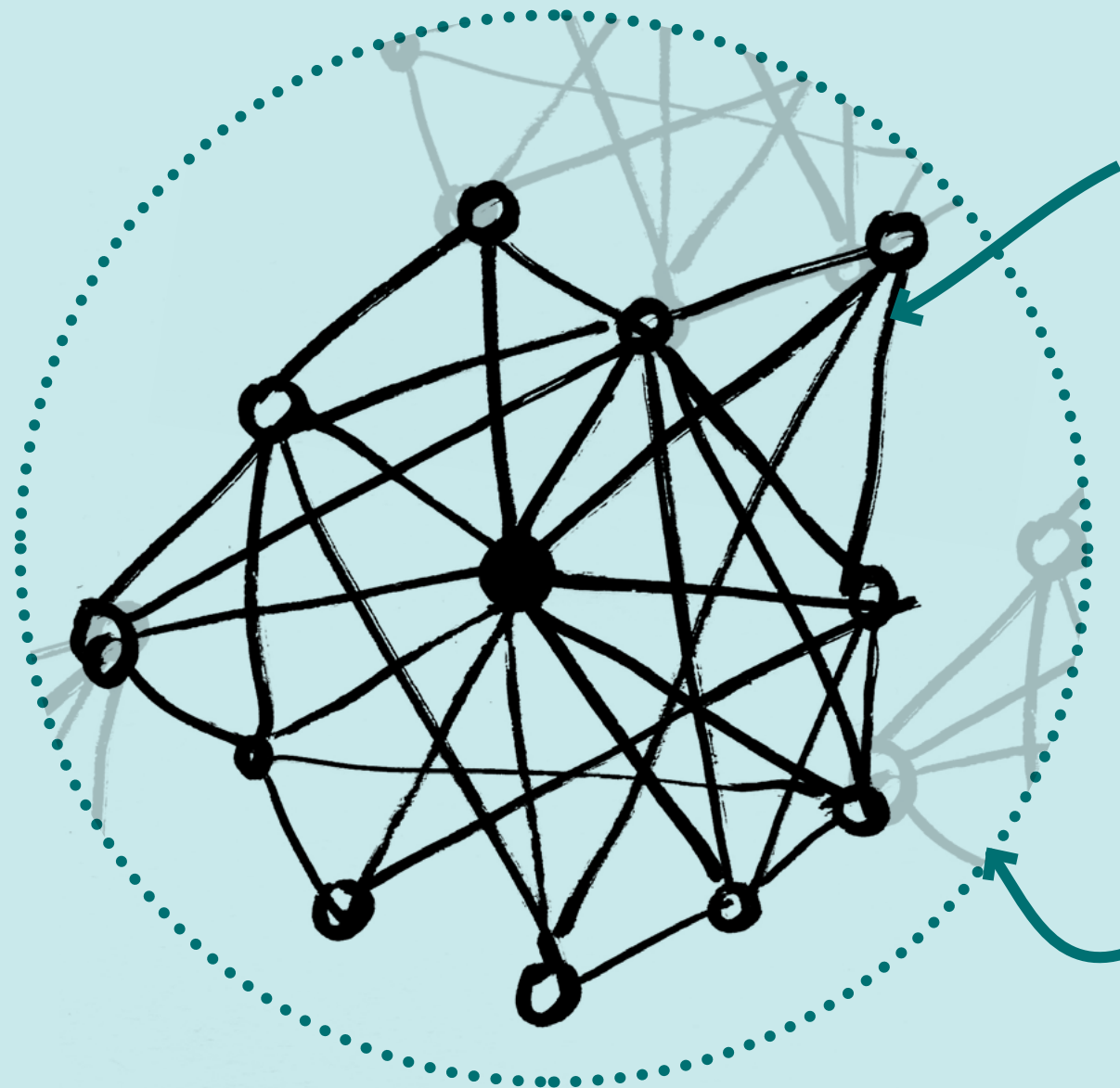


5.

Acknowledged

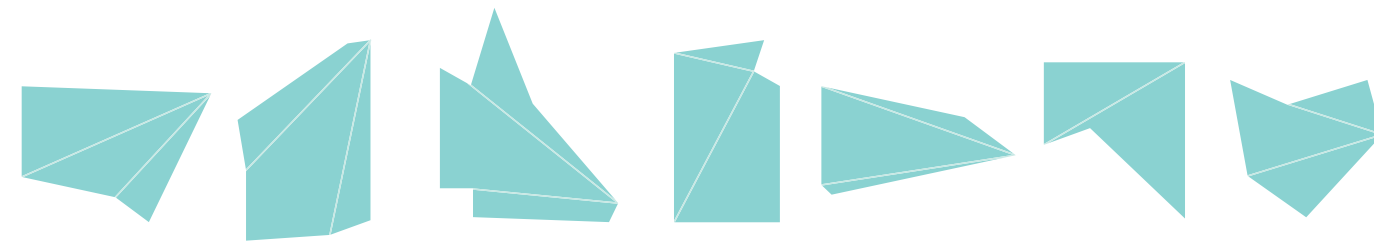


Tech-enabled community building



Participatory
Face-to-face
Informal
Easy
Regular
Flexible

Boundaries



meet. collaborate. belong.

@juliasuh_
www.paperplain.co
www.smallshift.com.au