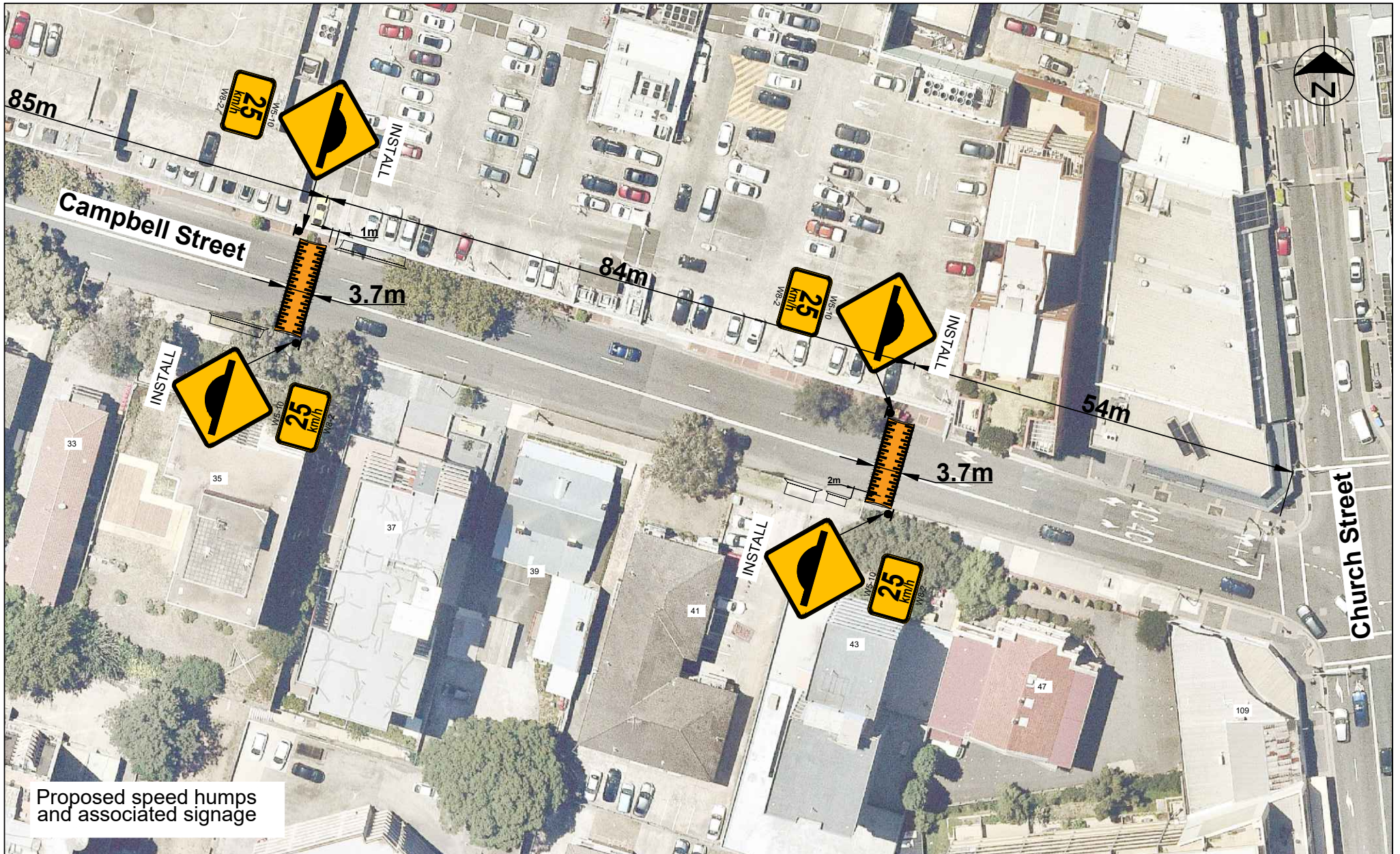


Proposed speed humps and associated signage

DATE	AMENDMENT	INIT.	NOTES	SCALE	N.T.S.
			ALL SIGN POSTING TO BE IN ACCORDANCE WITH AS.1742	DESIGNED	RP
			ALL DIMENSIONS ARE IN METRES	DRAWN	11/05/2020
			CAUTION: SERVICES TO BE LOCATED PRIOR TO EXCAVATION	CHECKED	
				APPROVED	

<b>CITY OF PARRAMATTA COUNCIL</b>	<b>STD DWG</b>
<b>TRAFFIC AND TRANSPORT SERVICES</b>	1 of 2



Proposed speed humps and associated signage

DATE	AMENDMENT	INIT.	NOTES	SCALE	N.T.S.
			ALL SIGN POSTING TO BE IN ACCORDANCE WITH AS.1742	DESIGNED	RP
			ALL DIMENSIONS ARE IN METRES	DRAWN	11/05/2020
			CAUTION: SERVICES TO BE LOCATED PRIOR TO EXCAVATION	CHECKED	
				APPROVED	

**CITY OF PARRAMATTA COUNCIL**

**TRAFFIC AND TRANSPORT SERVICES**

**STD DWG**

2 of 2