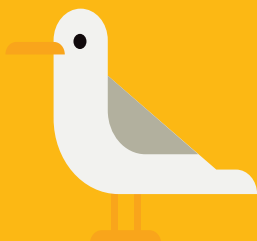


Summer Opening Hours

New Summer opening hours will begin
from Monday 21st December.



2020/21

Weekdays Session Times

5:30am - 1:00pm

2:00pm - 7:00pm

Weekends and Public Holidays Session Times

8:00am - 1:00pm

2:00pm - 4:00pm

Epping Aquatic Centre is limited to 100 patrons and will open in 2 sessions with swimming ceasing 15 minutes prior to the session ending. This is to allow for regular cleaning and sanitisation of the centre. Further to this, the centre will be closed for 1 hour during the day to undertake deep cleaning to ensure the highest standards of cleanliness are maintained for your safety.