



# Burnside Shopping Village

CRN OF GLENCOE AVE & BLACKWOOD PLACE, Oatlands  
DUNDAS WARD



## The Place

**Burnside Shopping Village** offers a number of local shops and services. Situated close to Uniting Care services and facilities, the local centre is also connected to Burnside Gardens Community Centre. This centre is privately owned, with shops sharing a single building fronting a landscaped carpark.

## Centres Hierarchy

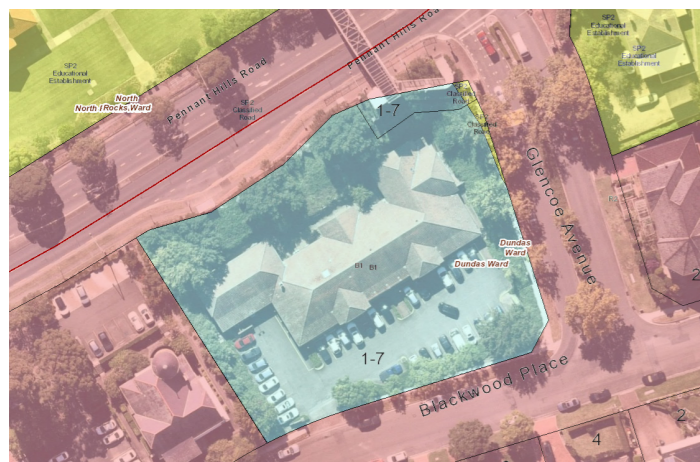
Specialised Centre

Town Centre

Village Centre

Neighbourhood Centre

▶ **Local Centre**



## Recent capital investment

- ▶ No recent capital investments.

## Business Activities

- ▶ Numbers Of Shops: 6
- ▶ Number Of Vacancies: 0
- ▶ Vacancy Rate: 0%

1 Dentist	4 Real Estate Agent
2 Hairdresser	5 Other
3 Restaurant	

## Zoning

- ▶ B1 Neighbourhood Centre surrounded by R2 Low Density Residential and SP2 Infrastructure.

## Demographics

- ▶ Between 2016 and 2020 Oatlands experienced an 8% increase in population, from 5,698 to 6,132.
- ▶ In 2021, the largest age group (22.6%) is forecast to be parents and homebuilders (35 to 49 year olds).
- ▶ The largest increase between 2016 and 2021 is forecast to be couple families with dependents, which will increase by 33 households and account for 46.5% of all households.

## Public Transport

550 + 625 Bus Route (regular service)

## Community Voice Survey

Participants are most likely to visit this centre

- ▶ Monthly (39%)

The most frequently selected reasons for visiting include:

- 1 To access particular services
- 2 Location
- 3 Convenience; Variety of offerings (=)

How likely is it on a scale of 0 to 10 that you would recommend this Centre to a friend or neighbour?

