

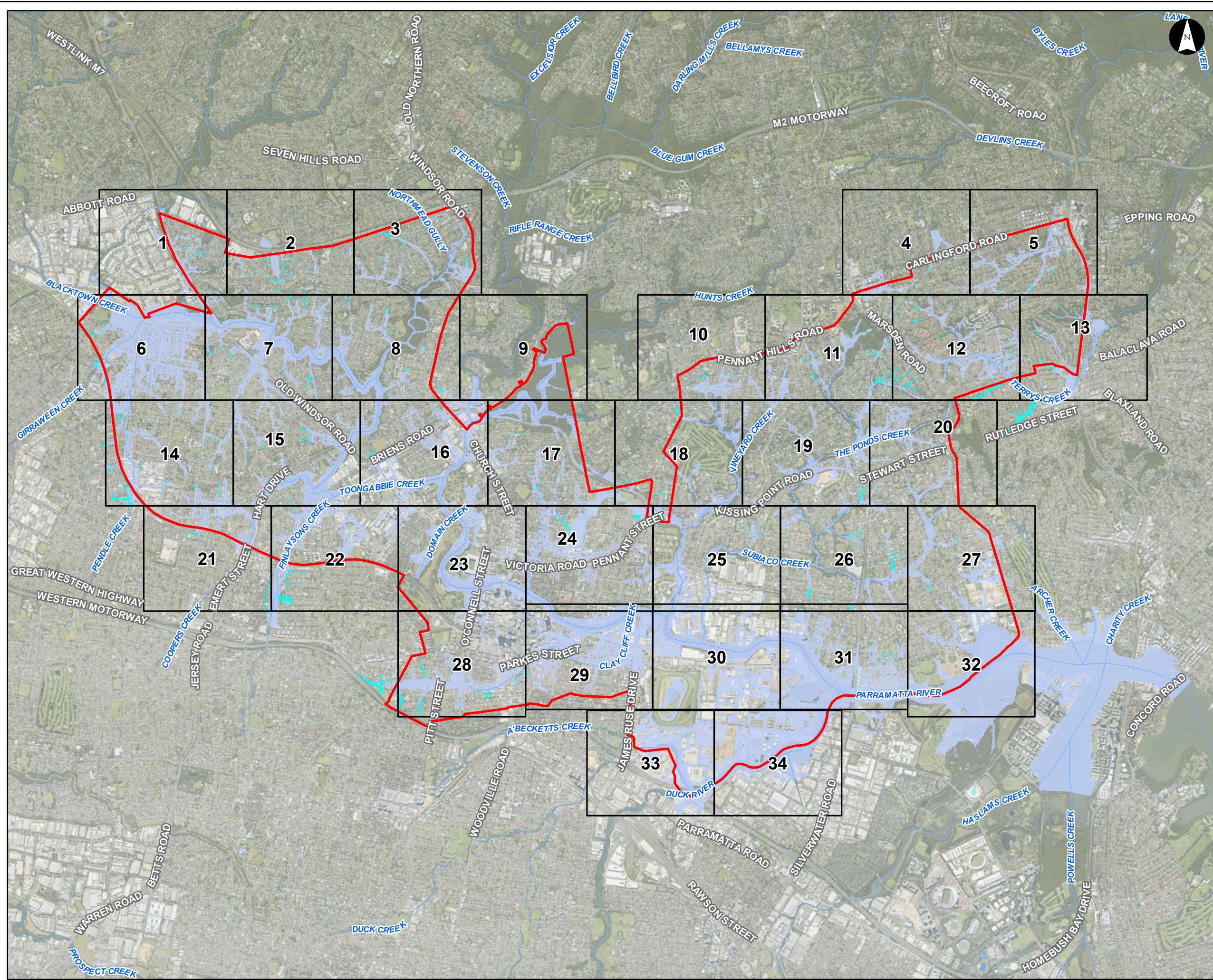
APPENDIX

L

FLOOD PLANNING AREAS







Flood Planning Areas  
Overview and  
Figure Index Sheet

Parramatta River Flood Study

Project Code: 59916074 / 304600102  
Drawn By: ANK  
Map: 59916074-GS-071-OverviewFPA.mxd  
Rev: 06  
Date: 2024-04-15

**Legend**

- Study Area
- Watercourse
- Map Grid
- Flood Planning Area
- Local upstream overland flow

**Figure L1.1**

Notes:

- Coordinate System: GDA 1994 MGA Zone 56

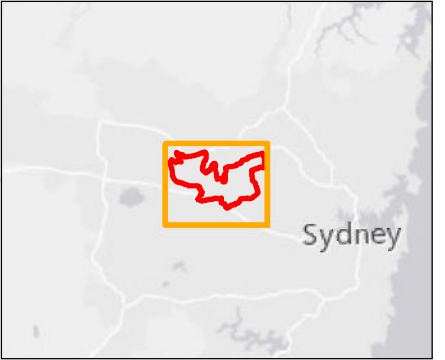
References:

- Base data supplied by NSW SS and Esri
- Aerial imagery supplied by MetroMap
- Ward boundaries supplied by PCC

**Stantec**

0 1 2 km

Scale at A3 1:45,000







## Flood Planning Areas

Parramatta River Flood Study

Project Code: 59916074 / 304600102  
Drawn By: ANK  
Map: 59916074-GS-072-FPA.mxd  
Rev: 06  
Date: 2024-04-15

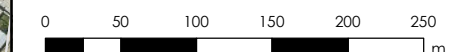
### Legend

- Study Area
- Watercourse
- Cadastre
- Building Footprint
- Climate Change Extents
- Flood Inundation Extents
- Flood Planning Area
- Local upstream overland flow -  
obtained from preliminary  
ARR87 ROG applied 50mm  
depth filter and without 500mm  
Freeboard

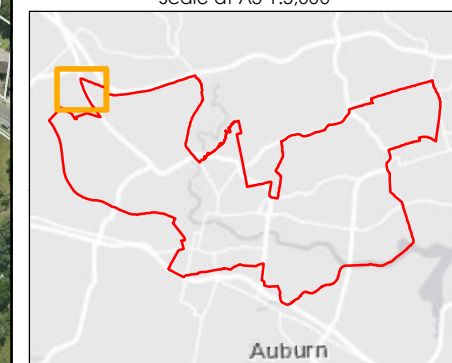
Figure L2.1

Notes:  
1. Coordinate System: GDA 1994 MGA Zone 56

References:  
1. Base data supplied by NSW SS and Esri  
2. Aerial imagery supplied by MetroMap  
3. Cadastre supplied by PCC (2015)  
4. Ward boundaries supplied by PCC



Scale at A3 1:5,000







## Flood Planning Areas

Parramatta River Flood Study

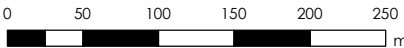
Project Code: 59916074 / 304600102  
Drawn By: ANK  
Map: 59916074-GS-072-FPA.mxd  
Rev: 06  
Date: 2024-04-15

### Legend

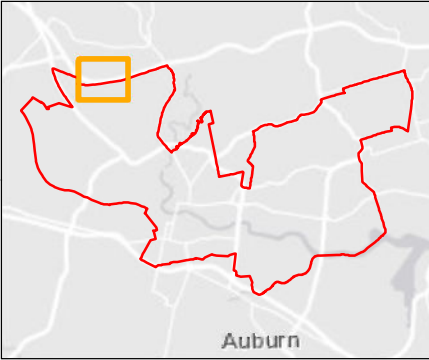
- Study Area
  - Watercourse
  - Cadastre
  - Building Footprint
  - Climate Change Extents
  - Flood Inundation Extents
  - Flood Planning Area
- Local upstream overland flow -  
obtained from preliminary  
ARR87 ROG applied 50mm  
depth filter and without 500mm  
Freeboard

Figure L2.2

- Notes:
- Coordinate System: GDA 1994 MGA Zone 56
- References:
- Base data supplied by NSW SS and Esri
  - Aerial imagery supplied by MetroMap
  - Cadastre supplied by PCC (2015)
  - Ward boundaries supplied by PCC



Scale at A3 1:5,000







## Flood Planning Areas

Parramatta River Flood Study

Project Code: 59916074 / 304600102  
Drawn By: ANK  
Map: 59916074-GS-072-FPA.mxd  
Rev: 06  
Date: 2024-04-15

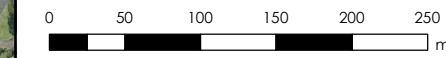
### Legend

- Study Area
  - Watercourse
  - Cadastre
  - Building Footprint
  - Climate Change Extents
  - Flood Inundation Extents
  - Flood Planning Area
- Local upstream overland flow -  
obtained from preliminary  
ARR87 ROG applied 50mm  
depth filter and without 500mm  
Freeboard

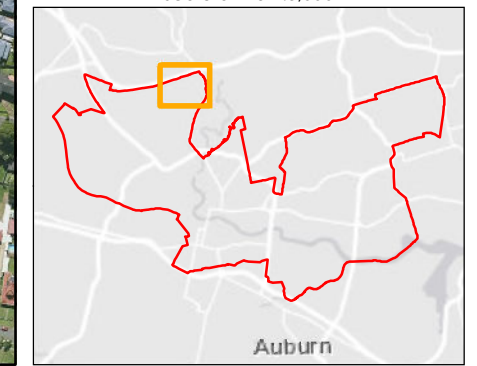
Figure L2.3

Notes:  
1. Coordinate System: GDA 1994 MGA Zone 56

- References:
1. Base data supplied by NSW SS and Esri
  2. Aerial imagery supplied by MetroMap
  3. Cadastre supplied by PCC (2015)
  4. Ward boundaries supplied by PCC



Scale at A3 1:5,000







# Flood Planning Areas

Parramatta River Flood Study

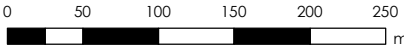
Project Code: 59916074 / 304600102  
Drawn By: ANK  
Map: 59916074-GS-072-FPA.mxd  
Rev: 06  
Date: 2024-04-15

## Legend

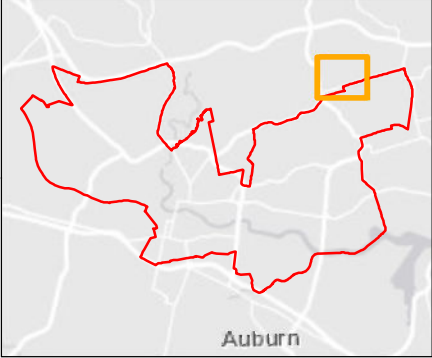
- Study Area
  - Watercourse
  - Cadastre
  - Building Footprint
  - Climate Change Extents
  - Flood Inundation Extents
  - Flood Planning Area
- Local upstream overland flow - obtained from preliminary  
 ARR87 ROG applied 50mm depth filter and without 500mm Freeboard

Figure L2.4

- Notes:
- Coordinate System: GDA 1994 MGA Zone 56
- References:
- Base data supplied by NSW SS and Esri
  - Aerial imagery supplied by MetroMap
  - Cadastre supplied by PCC (2015)
  - Ward boundaries supplied by PCC



Scale at A3 1:5,000







# Flood Planning Areas

Parramatta River Flood Study

Project Code: 59916074 / 304600102  
Drawn By: ANK  
Map: 59916074-GS-072-FPA.mxd  
Rev: 06  
Date: 2024-04-15

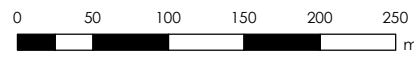
## Legend

- Study Area
- Watercourse
- Cadastre
- Building Footprint
- Climate Change Extents
- Flood Inundation Extents
- Flood Planning Area
- Local upstream overland flow -  
obtained from preliminary  
ARR87 ROG applied 50mm  
depth filter and without 500mm  
Freeboard

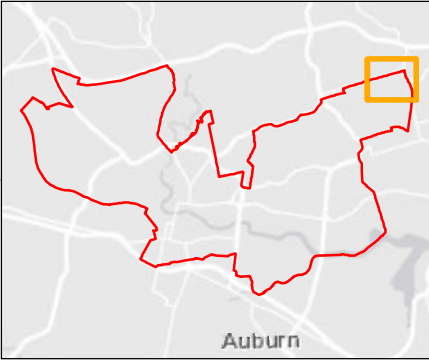
Figure L2.5

Notes:  
1. Coordinate System: GDA 1994 MGA Zone 56

References:  
1. Base data supplied by NSW SS and Esri  
2. Aerial imagery supplied by MetroMap  
3. Cadastre supplied by PCC (2015)  
4. Ward boundaries supplied by PCC



Scale at A3 1:5,000







## Flood Planning Areas

Parramatta River Flood Study

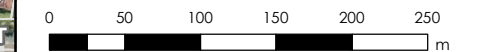
Project Code: 59916074 / 304600102  
Drawn By: ANK  
Map: 59916074-GS-072-FPA.mxd  
Rev: 06  
Date: 2024-04-15

### Legend

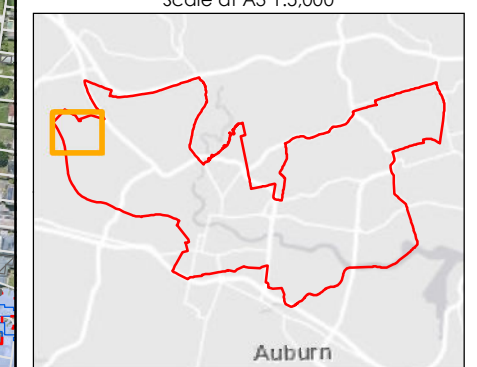
- Study Area
  - Watercourse
  - Cadastre
  - Building Footprint
  - Climate Change Extents
  - Flood Inundation Extents
  - Flood Planning Area
- Local upstream overland flow -  
obtained from preliminary  
 ARR87 ROG applied 50mm  
depth filter and without 500mm  
Freeboard

Figure L2.6

- Notes:
- Coordinate System: GDA 1994 MGA Zone 56
- References:
- Base data supplied by NSW SS and Esri
  - Aerial imagery supplied by MetroMap
  - Cadastre supplied by PCC (2015)
  - Ward boundaries supplied by PCC



Scale at A3 1:5,000







## Flood Planning Areas

Parramatta River Flood Study

Project Code: 59916074 / 304600102  
Drawn By: ANK  
Map: 59916074-GS-072-FPA.mxd  
Rev: 06  
Date: 2024-04-15

### Legend

- Study Area
- Watercourse
- Cadastre
- Building Footprint
- Climate Change Extents
- Flood Inundation Extents
- Flood Planning Area
- Local upstream overland flow - obtained from preliminary
- ARR87 ROG applied 50mm depth filter and without 500mm Freeboard

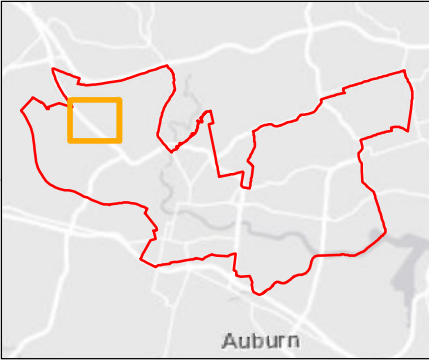
Figure L2.7

Notes:  
1. Coordinate System: GDA 1994 MGA Zone 56

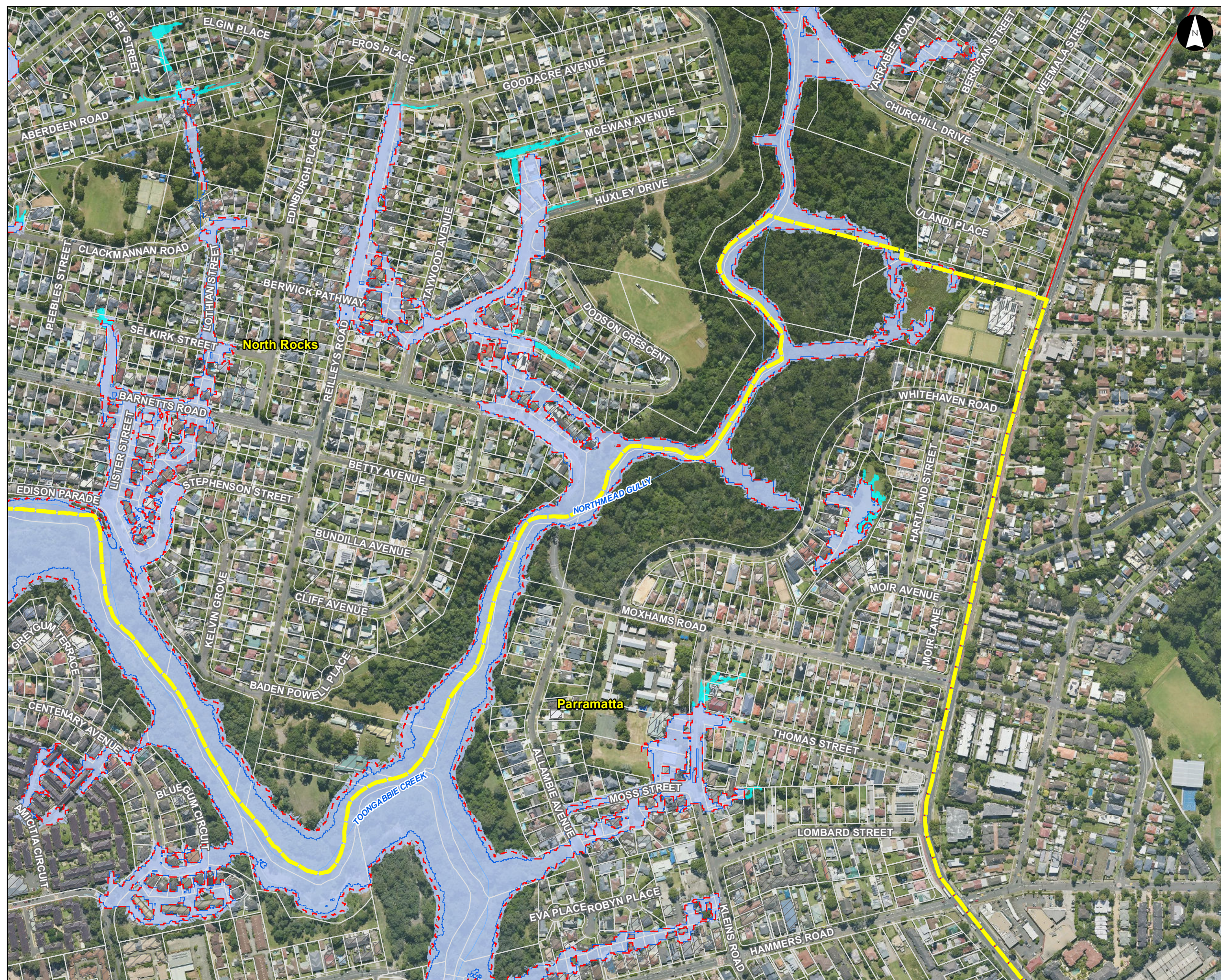
References:  
1. Base data supplied by NSW SS and Esri  
2. Aerial imagery supplied by MetroMap  
3. Cadastre supplied by PCC (2015)  
4. Ward boundaries supplied by PCC



Scale at A3 1:5,000














## Flood Planning Areas

Parramatta River Flood Study

Project Code: 59916074 / 304600102  
Drawn By: ANK  
Map: 59916074-GS-072-FPA.mxd  
Rev: 06  
Date: 2024-04-15

### Legend

-  Study Area
  -  Watercourse
  -  Cadastre
  -  Building Footprint
  -  Climate Change Extents
  -  Flood Inundation Extents
  -  Flood Planning Area
- Local upstream overland flow - obtained from preliminary ARR87 ROG applied 50mm depth filter and without 500mm Freeboard

### Figure L2.8

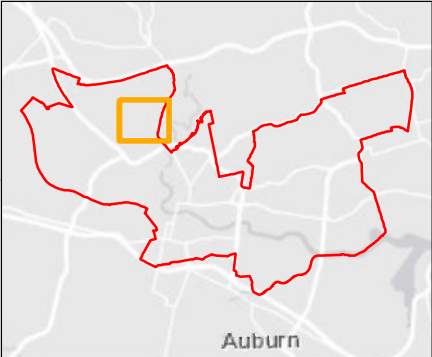
Notes:  
1. Coordinate System: GDA 1994 MGA Zone 56

References:

1. Base data supplied by NSW SS and Esri
2. Aerial imagery supplied by MetroMap
3. Cadastre supplied by PCC (2015)
4. Ward boundaries supplied by PCC



Scale at A3 1:5,000







## Flood Planning Areas

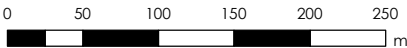
Parramatta River Flood Study  
Project Code: 59916074 / 304600102  
Drawn By: ANK  
Map: 59916074-GS-072-FPA.mxd  
Rev: 06  
Date: 2024-04-15

### Legend

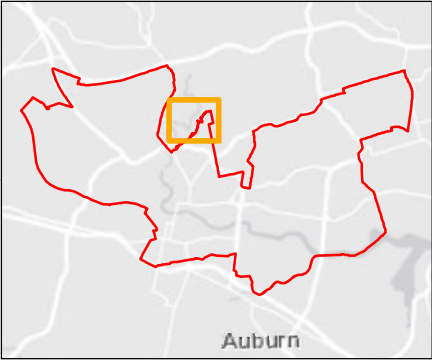
- Study Area
- Watercourse
- Cadastre
- Building Footprint
- Climate Change Extents
- Flood Inundation Extents
- Flood Planning Area
- Local upstream overland flow - obtained from preliminary ARR87 ROG applied 50mm depth filter and without 500mm Freeboard

Figure L2.9

- Notes:
- Coordinate System: GDA 1994 MGA Zone 56
- References:
- Base data supplied by NSW SS and Esri
  - Aerial imagery supplied by MetroMap
  - Cadastre supplied by PCC (2015)
  - Ward boundaries supplied by PCC



Scale at A3 1:5,000







## Flood Planning Areas

Parramatta River Flood Study

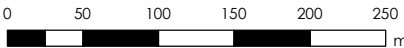
Project Code: 59916074 / 304600102  
Drawn By: ANK  
Map: 59916074-GS-072-FPA.mxd  
Rev: 06  
Date: 2024-04-15

### Legend

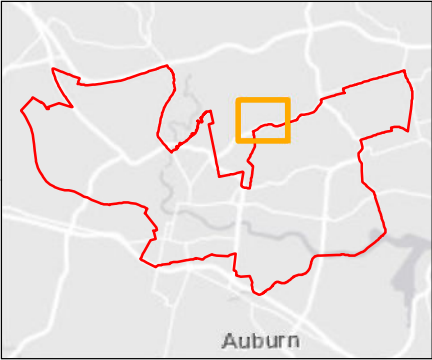
- Study Area
  - Watercourse
  - Cadastre
  - Building Footprint
  - Climate Change Extents
  - Flood Inundation Extents
  - Flood Planning Area
- Local upstream overland flow - obtained from preliminary  
 ARR87 ROG applied 50mm depth filter and without 500mm Freeboard

Figure L2.10

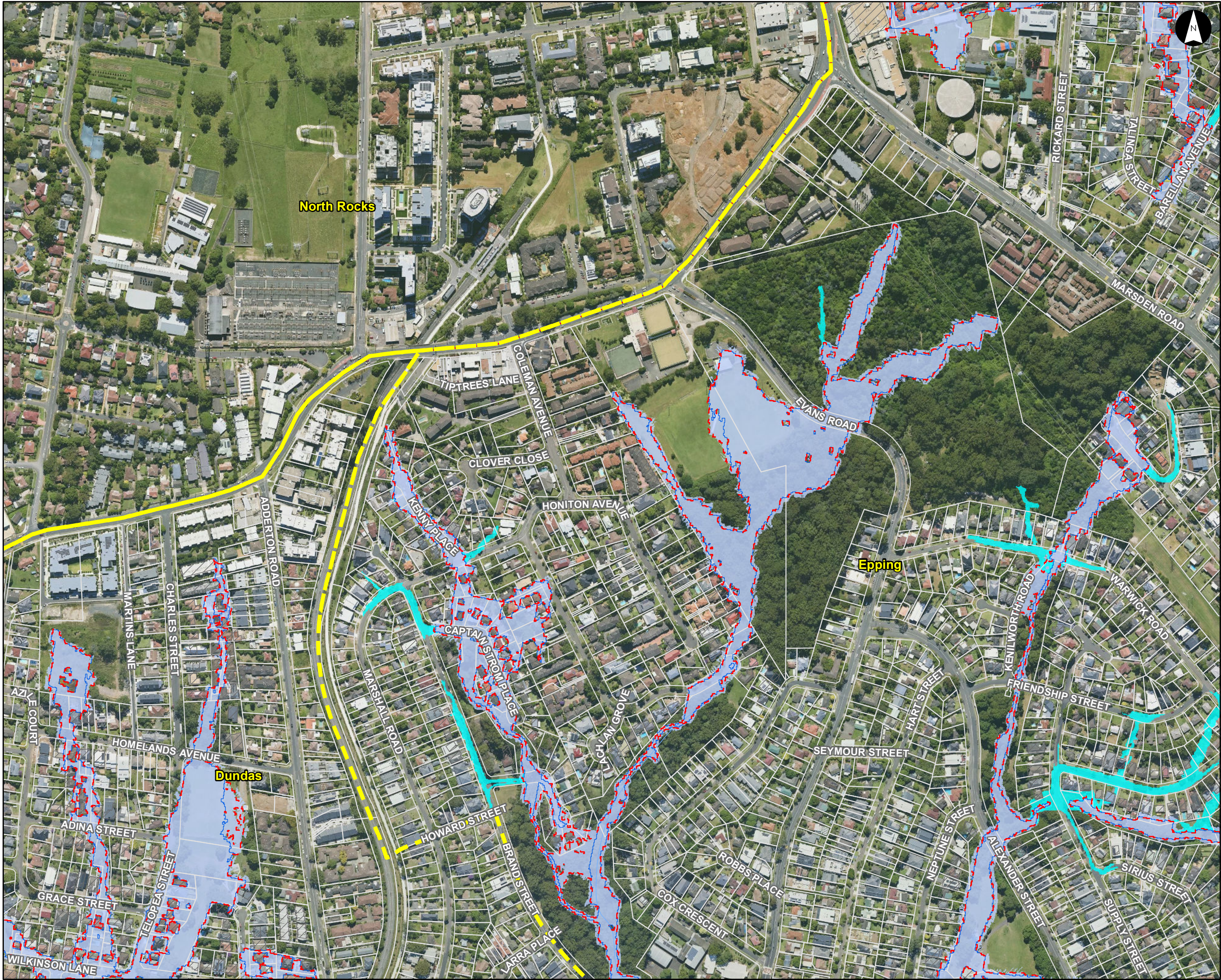
- Notes:
1. Coordinate System: GDA 1994 MGA Zone 56
- References:
1. Base data supplied by NSW SS and Esri
  2. Aerial imagery supplied by MetroMap
  3. Cadastre supplied by PCC (2015)
  4. Ward boundaries supplied by PCC



Scale at A3 1:5,000







# Flood Planning Areas

Parramatta River Flood Study

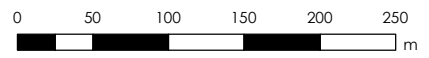
Project Code: 59916074 / 304600102  
Drawn By: ANK  
Map: 59916074-GS-072-FPA.mxd  
Rev: 06  
Date: 2024-04-15

## Legend

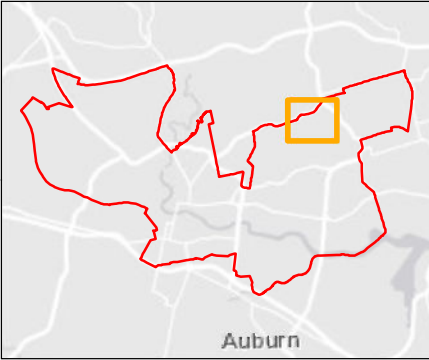
- Study Area
  - Watercourse
  - Cadastre
  - Building Footprint
  - Climate Change Extents
  - Flood Inundation Extents
  - Flood Planning Area
- Local upstream overland flow - obtained from preliminary  
 ARR87 ROG applied 50mm depth filter and without 500mm Freeboard

Figure L2.11

- Notes:
1. Coordinate System: GDA 1994 MGA Zone 56
- References:
1. Base data supplied by NSW SS and Esri
  2. Aerial imagery supplied by MetroMap
  3. Cadastre supplied by PCC (2015)
  4. Ward boundaries supplied by PCC



Scale at A3 1:5,000







## Flood Planning Areas

Parramatta River Flood Study

Project Code: 59916074 / 304600102  
Drawn By: ANK  
Map: 59916074-GS-072-FPA.mxd  
Rev: 06  
Date: 2024-04-15

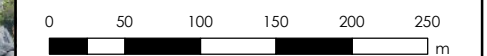
### Legend

- Study Area
- Watercourse
- Cadastre
- Building Footprint
- Climate Change Extents
- Flood Inundation Extents
- Flood Planning Area
- Local upstream overland flow -  
obtained from preliminary  
ARR87 ROG applied 50mm  
depth filter and without 500mm  
Freeboard

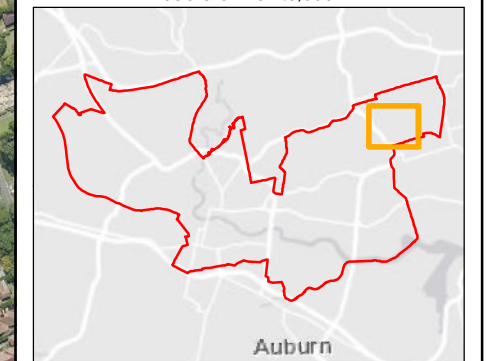
Figure L2.12

Notes:  
1. Coordinate System: GDA 1994 MGA Zone 56

References:  
1. Base data supplied by NSW SS and Esri  
2. Aerial imagery supplied by MetroMap  
3. Cadastre supplied by PCC (2015)  
4. Ward boundaries supplied by PCC



Scale at A3 1:5,000







## Flood Planning Areas

Parramatta River Flood Study

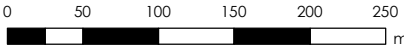
Project Code: 59916074 / 304600102  
Drawn By: ANK  
Map: 59916074-GS-072-FPA.mxd  
Rev: 06  
Date: 2024-04-15

### Legend

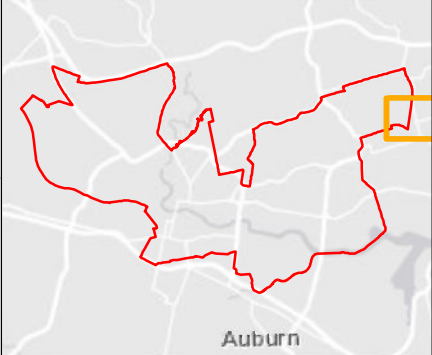
- Study Area
  - Watercourse
  - Cadastre
  - Building Footprint
  - Climate Change Extents
  - Flood Inundation Extents
  - Flood Planning Area
- Local upstream overland flow -  
obtained from preliminary  
ARR87 ROG applied 50mm  
depth filter and without 500mm  
Freeboard

Figure L2.13

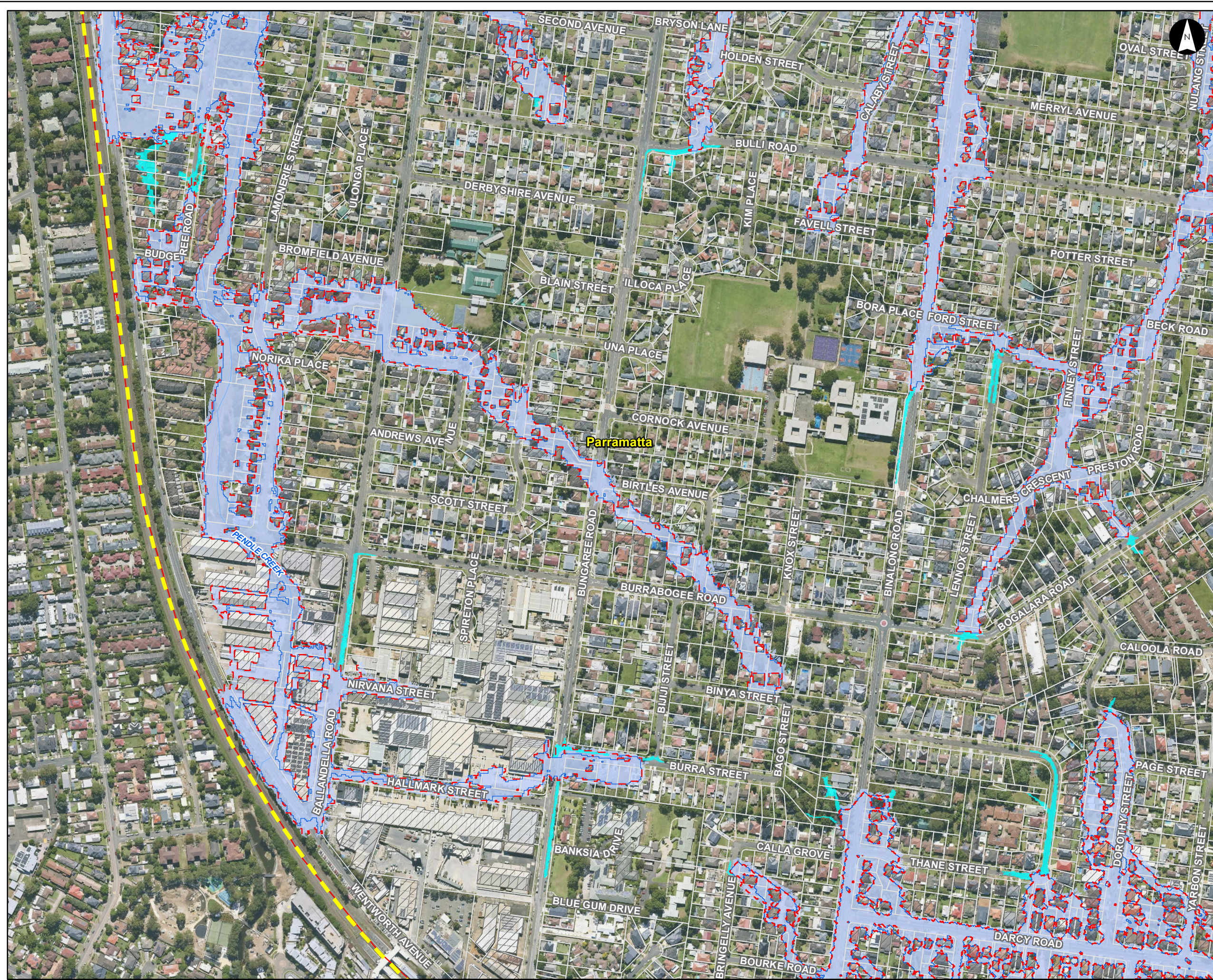
- Notes:
1. Coordinate System: GDA 1994 MGA Zone 56
- References:
1. Base data supplied by NSW SS and Esri
  2. Aerial imagery supplied by MetroMap
  3. Cadastre supplied by PCC (2015)
  4. Ward boundaries supplied by PCC



Scale at A3 1:5,000







## Flood Planning Areas

Parramatta River Flood Study

Project Code: 59916074 / 304600102  
Drawn By: ANK  
Map: 59916074-GS-072-FPA.mxd  
Rev: 06  
Date: 2024-04-15

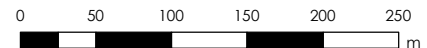
### Legend

- Study Area
  - Watercourse
  - Cadastre
  - Building Footprint
  - Climate Change Extents
  - Flood Inundation Extents
  - Flood Planning Area
- Local upstream overland flow -  
obtained from preliminary  
ARR87 ROG applied 50mm  
depth filter and without 500mm  
Freeboard

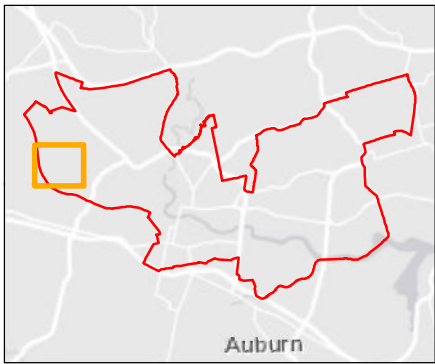
Figure L2.14

Notes:  
1. Coordinate System: GDA 1994 MGA Zone 56

References:  
1. Base data supplied by NSW SS and Esri  
2. Aerial imagery supplied by MetroMap  
3. Cadastre supplied by PCC (2015)  
4. Ward boundaries supplied by PCC



Scale at A3 1:5,000














### Figure L2.15

## Flood Planning Areas

# Parramatta River Flood Study

Project Code: 59916074 / 304600102  
 Drawn By: ANK  
 Map: 59916074-GS-072-FPA.mxd  
 Rev: 06  
 Date: 2024-04-15

## Legend

-  Study Area
-  Watercourse
-  Cadastre
-  Building Footprint
-  Climate Change Extents
-  Flood Inundation Extents
-  Flood Planning Area

Local upstream overland flow - obtained from preliminary ARR87 ROG applied 50mm depth filter and without 500mm Freeboard

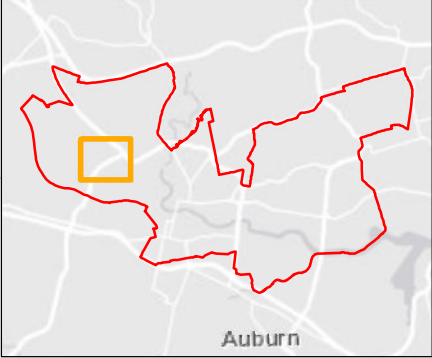
Notes:  
1. Coordinate System: GDA 1994 MGA Zone 56

References:

1. Base data supplied by NSW SS and Esri
2. Aerial imagery supplied by MetroMap
3. Cadastre supplied by PCC (2015)
4. Ward boundaries supplied by PCC



Scale at A3 1:5,000







## Flood Planning Areas

Parramatta River Flood Study

Project Code: 59916074 / 304600102  
Drawn By: ANK  
Map: 59916074-GS-072-FPA.mxd  
Rev: 06  
Date: 2024-04-15

### Legend

- Study Area
  - Watercourse
  - Cadastre
  - Building Footprint
  - Climate Change Extents
  - Flood Inundation Extents
  - Flood Planning Area
- Local upstream overland flow -  
obtained from preliminary  
ARR87 ROG applied 50mm  
depth filter and without 500mm  
Freeboard
- 

Figure L2.16

- Notes:
- Coordinate System: GDA 1994 MGA Zone 56
- References:
- Base data supplied by NSW SS and Esri
  - Aerial imagery supplied by MetroMap
  - Cadastre supplied by PCC (2015)
  - Ward boundaries supplied by PCC



Scale at A3 1:5,000

