

## Flood Planning Areas

Parramatta River Flood Study

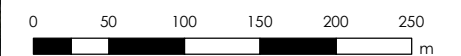
Project Code: 59916074 / 304600102  
Drawn By: ANK  
Map: 59916074-GS-072-FPA.mxd  
Rev: 06  
Date: 2024-04-15

### Legend

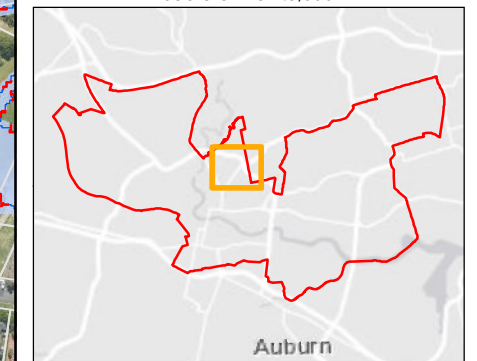
- Study Area
  - Watercourse
  - Cadastre
  - Building Footprint
  - Climate Change Extents
  - Flood Inundation Extents
  - Flood Planning Area
- Local upstream overland flow -  
obtained from preliminary  
ARR87 ROG applied 50mm  
depth filter and without 500mm  
Freeboard

Figure L2.17

- Notes:
- Coordinate System: GDA 1994 MGA Zone 56
- References:
- Base data supplied by NSW SS and Esri
  - Aerial imagery supplied by MetroMap
  - Cadastre supplied by PCC (2015)
  - Ward boundaries supplied by PCC



Scale at A3 1:5,000







## Flood Planning Areas

Parramatta River Flood Study

Project Code: 59916074 / 304600102  
Drawn By: ANK  
Map: 59916074-GS-072-FPA.mxd  
Rev: 06  
Date: 2024-04-15

### Legend

- Study Area
- Watercourse
- Cadastre
- Building Footprint
- Climate Change Extents
- Flood Inundation Extents
- Flood Planning Area

Local upstream overland flow - obtained from preliminary  
ARR87 ROG applied 50mm depth filter and without 500mm Freeboard

### Figure L2.18

Notes:  
1. Coordinate System: GDA 1994 MGA Zone 56

References:  
1. Base data supplied by NSW SS and Esri  
2. Aerial imagery supplied by MetroMap  
3. Cadastre supplied by PCC (2015)  
4. Ward boundaries supplied by PCC

Stantec

0 50 100 150 200 250 m

Scale at A3 1:5,000





## Flood Planning Areas

Parramatta River Flood Study

Project Code: 59916074 / 304600102  
Drawn By: ANK  
Map: 59916074-GS-072-FPA.mxd  
Rev: 06  
Date: 2024-04-15

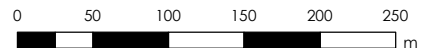
### Legend

- Study Area
- Watercourse
- Cadastre
- Building Footprint
- Climate Change Extents
- Flood Inundation Extents
- Flood Planning Area
- Local upstream overland flow - obtained from preliminary
- ARR87 ROG applied 50mm depth filter and without 500mm Freeboard

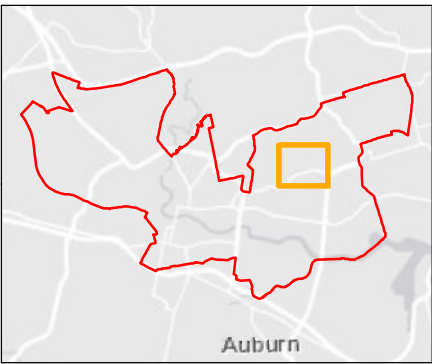
Figure L2.19

Notes:  
1. Coordinate System: GDA 1994 MGA Zone 56

References:  
1. Base data supplied by NSW SS and Esri  
2. Aerial imagery supplied by MetroMap  
3. Cadastre supplied by PCC (2015)  
4. Ward boundaries supplied by PCC



Scale at A3 1:5,000







# Flood Planning Areas

Parramatta River Flood Study

Project Code: 59916074 / 304600102  
Drawn By: ANK  
Map: 59916074-GS-072-FPA.mxd  
Rev: 06  
Date: 2024-04-15

## Legend

- Study Area
  - Watercourse
  - Cadastre
  - Building Footprint
  - Climate Change Extents
  - Flood Inundation Extents
  - Flood Planning Area
- Local upstream overland flow -  
obtained from preliminary  
ARR87 ROG applied 50mm  
depth filter and without 500mm  
Freeboard

Figure L2.20

Notes:

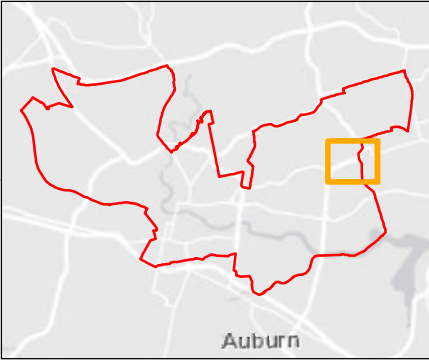
- Coordinate System: GDA 1994 MGA Zone 56

References:

- Base data supplied by NSW SS and Esri
- Aerial imagery supplied by MetroMap
- Cadastre supplied by PCC (2015)
- Ward boundaries supplied by PCC



Scale at A3 1:5,000







## Flood Planning Areas

Parramatta River Flood Study

Project Code: 59916074 / 304600102  
Drawn By: ANK  
Map: 59916074-GS-072-FPA.mxd  
Rev: 06  
Date: 2024-04-15

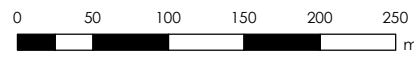
### Legend

- Study Area
- Watercourse
- Cadastre
- Building Footprint
- Climate Change Extents
- Flood Inundation Extents
- Flood Planning Area
- Local upstream overland flow - obtained from preliminary ARR87 ROG applied 50mm depth filter and without 500mm Freeboard

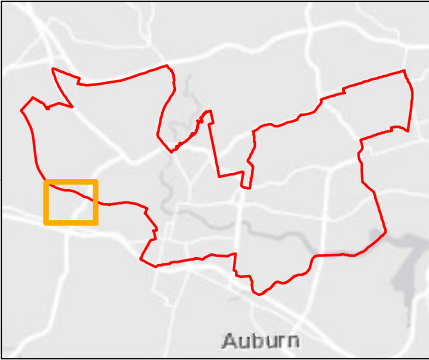
Figure L2.21

Notes:  
1. Coordinate System: GDA 1994 MGA Zone 56

- References:
1. Base data supplied by NSW SS and Esri
  2. Aerial imagery supplied by MetroMap
  3. Cadastre supplied by PCC (2015)
  4. Ward boundaries supplied by PCC



Scale at A3 1:5,000







## Flood Planning Areas

Parramatta River Flood Study

Project Code: 59916074 / 304600102  
Drawn By: ANK  
Map: 59916074-GS-072-FPA.mxd  
Rev: 06  
Date: 2024-04-15

**Legend**

- Study Area
- Watercourse
- Cadastre
- Building Footprint
- Climate Change Extents
- Flood Inundation Extents
- Flood Planning Area

Local upstream overland flow - obtained from preliminary  
 ARR87 ROG applied 50mm depth filter and without 500mm Freeboard

**Figure L2.22**

- Notes:
1. Coordinate System: GDA 1994 MGA Zone 56
- References:
1. Base data supplied by NSW SS and Esri
  2. Aerial imagery supplied by MetroMap
  3. Cadastre supplied by PCC (2015)
  4. Ward boundaries supplied by PCC

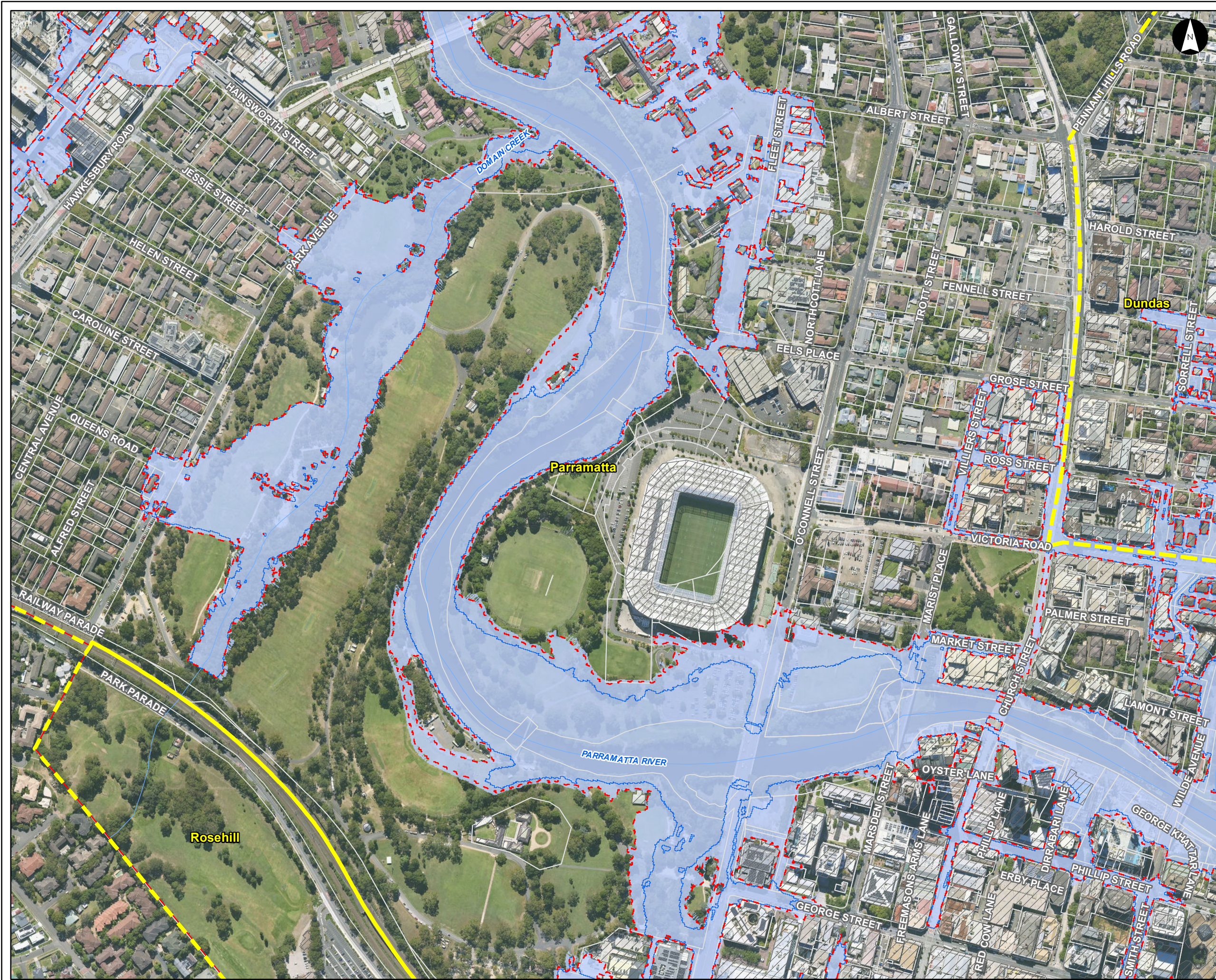
**Stantec**

0 50 100 150 200 250 m

Scale at A3 1:5,000

Auburn





## Flood Planning Areas

Parramatta River Flood Study

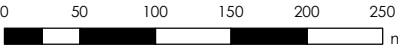
Project Code: 59916074 / 304600102  
Drawn By: ANK  
Map: 59916074-GS-072-FPA.mxd  
Rev: 06  
Date: 2024-04-15

### Legend

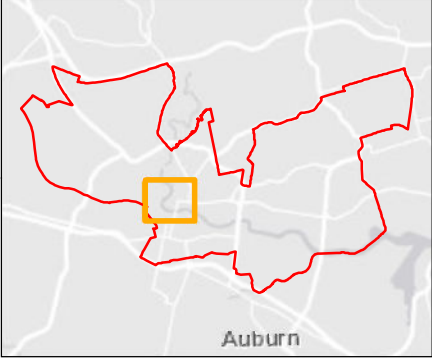
- Study Area
  - Watercourse
  - Cadastre
  - Building Footprint
  - Climate Change Extents
  - Flood Inundation Extents
  - Flood Planning Area
- Local upstream overland flow -  
obtained from preliminary  
ARR87 ROG applied 50mm  
depth filter and without 500mm  
Freeboard

Figure L2.23

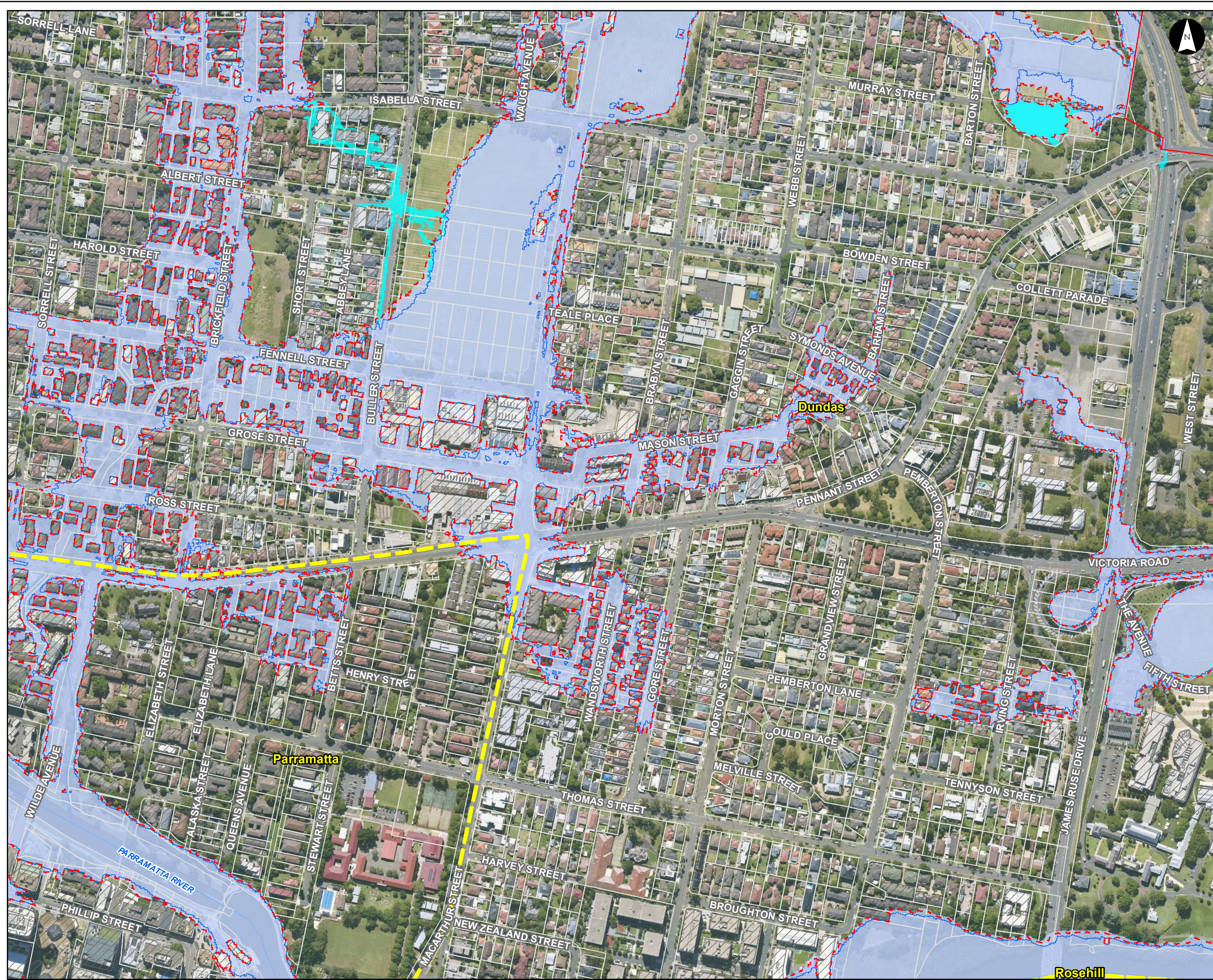
- Notes:
- Coordinate System: GDA 1994 MGA Zone 56
- References:
- Base data supplied by NSW SS and Esri
  - Aerial imagery supplied by MetroMap
  - Cadastre supplied by PCC (2015)
  - Ward boundaries supplied by PCC



Scale at A3 1:5,000







# Flood Planning Areas

Parramatta River Flood Study

Project Code: 59916074 / 304600102  
Drawn By: ANK  
Map: 59916074-GS-072-FPA.mxd  
Rev: 06  
Date: 2024-04-15

## Legend

- Study Area
  - Watercourse
  - Cadastre
  - Building Footprint
  - Climate Change Extents
  - Flood Inundation Extents
  - Flood Planning Area
- Local upstream overland flow - obtained from preliminary  
 ARR87 ROG applied 50mm depth filter and without 500mm Freeboard

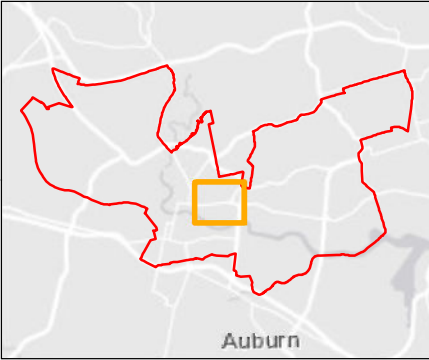
Figure L2.24

Notes:  
1. Coordinate System: GDA 1994 MGA Zone 56

- References:
- 1. Base data supplied by NSW SS and Esri
  - 2. Aerial imagery supplied by MetroMap
  - 3. Cadastre supplied by PCC (2015)
  - 4. Ward boundaries supplied by PCC



Scale at A3 1:5,000







## Flood Planning Areas

Parramatta River Flood Study

Project Code: 59916074 / 304600102

Drawn By: ANK

Map: 59916074-GS-072-FPA.mxd

Rev: 06

Date: 2024-04-15

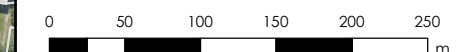
### Legend

- Study Area
- Watercourse
- Cadastre
- Building Footprint
- Climate Change Extents
- Flood Inundation Extents
- Flood Planning Area
- Local upstream overland flow - obtained from preliminary
- ARR87 ROG applied 50mm depth filter and without 500mm Freeboard

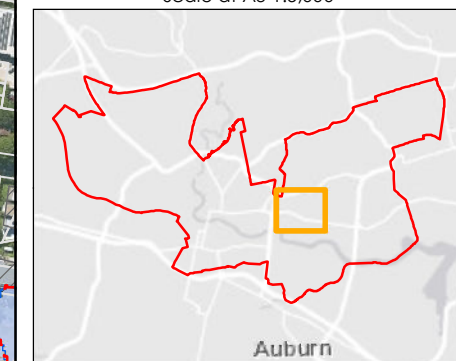
Figure L2.25

Notes:  
1. Coordinate System: GDA 1994 MGA Zone 56

References:  
1. Base data supplied by NSW SS and Esri  
2. Aerial imagery supplied by MetroMap  
3. Cadastre supplied by PCC (2015)  
4. Ward boundaries supplied by PCC



Scale at A3 1:5,000







# Flood Planning Areas

Parramatta River Flood Study

Project Code: 59916074 / 304600102  
Drawn By: ANK  
Map: 59916074-GS-072-FPA.mxd  
Rev: 06  
Date: 2024-04-15

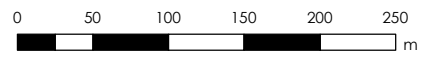
## Legend

- Study Area
- Watercourse
- Cadastre
- Building Footprint
- Climate Change Extents
- Flood Inundation Extents
- Flood Planning Area
- Local upstream overland flow - obtained from preliminary ARR87 ROG applied 50mm depth filter and without 500mm Freeboard

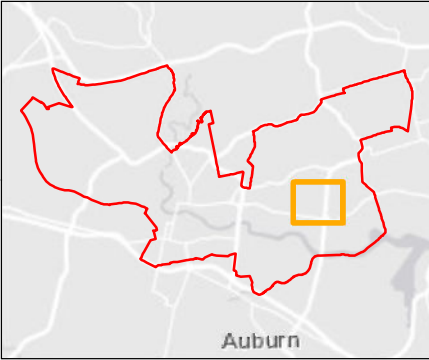
Figure L2.26

Notes:  
1. Coordinate System: GDA 1994 MGA Zone 56

- References:
- 1. Base data supplied by NSW SS and Esri
  - 2. Aerial imagery supplied by MetroMap
  - 3. Cadastre supplied by PCC (2015)
  - 4. Ward boundaries supplied by PCC



Scale at A3 1:5,000







## Flood Planning Areas

Parramatta River Flood Study

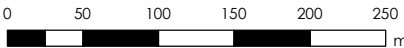
Project Code: 59916074 / 304600102  
Drawn By: ANK  
Map: 59916074-GS-072-FPA.mxd  
Rev: 06  
Date: 2024-04-15

### Legend

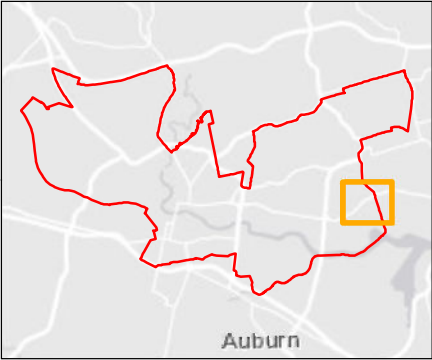
- Study Area
  - Watercourse
  - Cadastre
  - Building Footprint
  - Climate Change Extents
  - Flood Inundation Extents
  - Flood Planning Area
- Local upstream overland flow -  
obtained from preliminary  
ARR87 ROG applied 50mm  
depth filter and without 500mm  
Freeboard

Figure L2.27

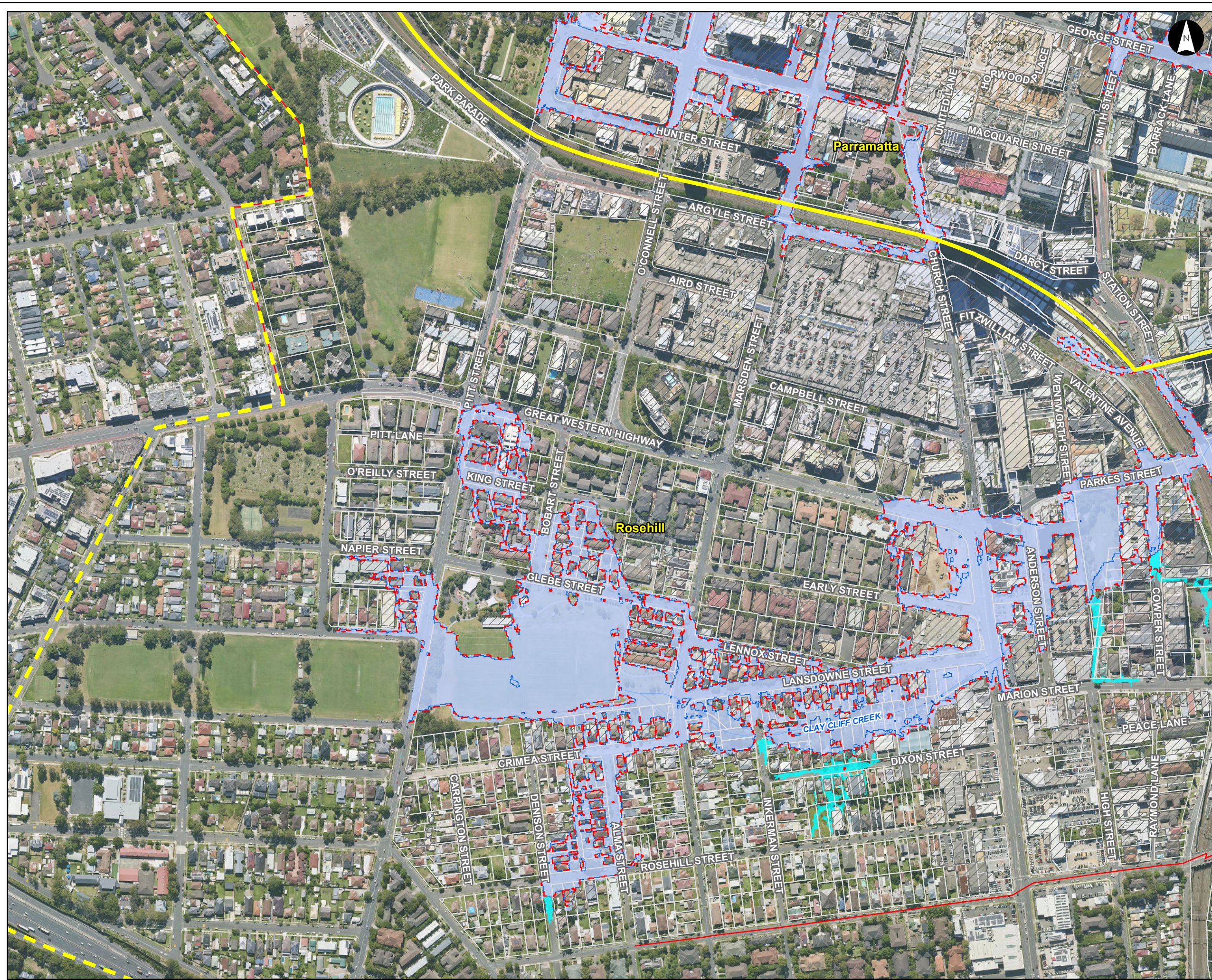
- Notes:
- Coordinate System: GDA 1994 MGA Zone 56
- References:
- Base data supplied by NSW SS and Esri
  - Aerial imagery supplied by MetroMap
  - Cadastre supplied by PCC (2015)
  - Ward boundaries supplied by PCC



Scale at A3 1:5,000







## Flood Planning Areas

Parramatta River Flood Study

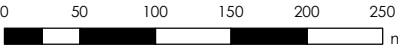
Project Code: 59916074 / 304600102  
Drawn By: ANK  
Map: 59916074-GS-072-FPA.mxd  
Rev: 06  
Date: 2024-04-15

### Legend

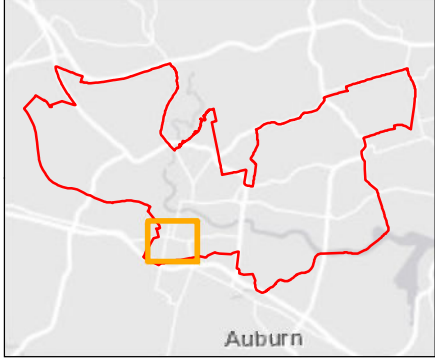
- Study Area
  - Watercourse
  - Cadastre
  - Building Footprint
  - Climate Change Extents
  - Flood Inundation Extents
  - Flood Planning Area
- Local upstream overland flow -  
obtained from preliminary  
ARR87 ROG applied 50mm  
depth filter and without 500mm  
Freeboard

Figure L2.28

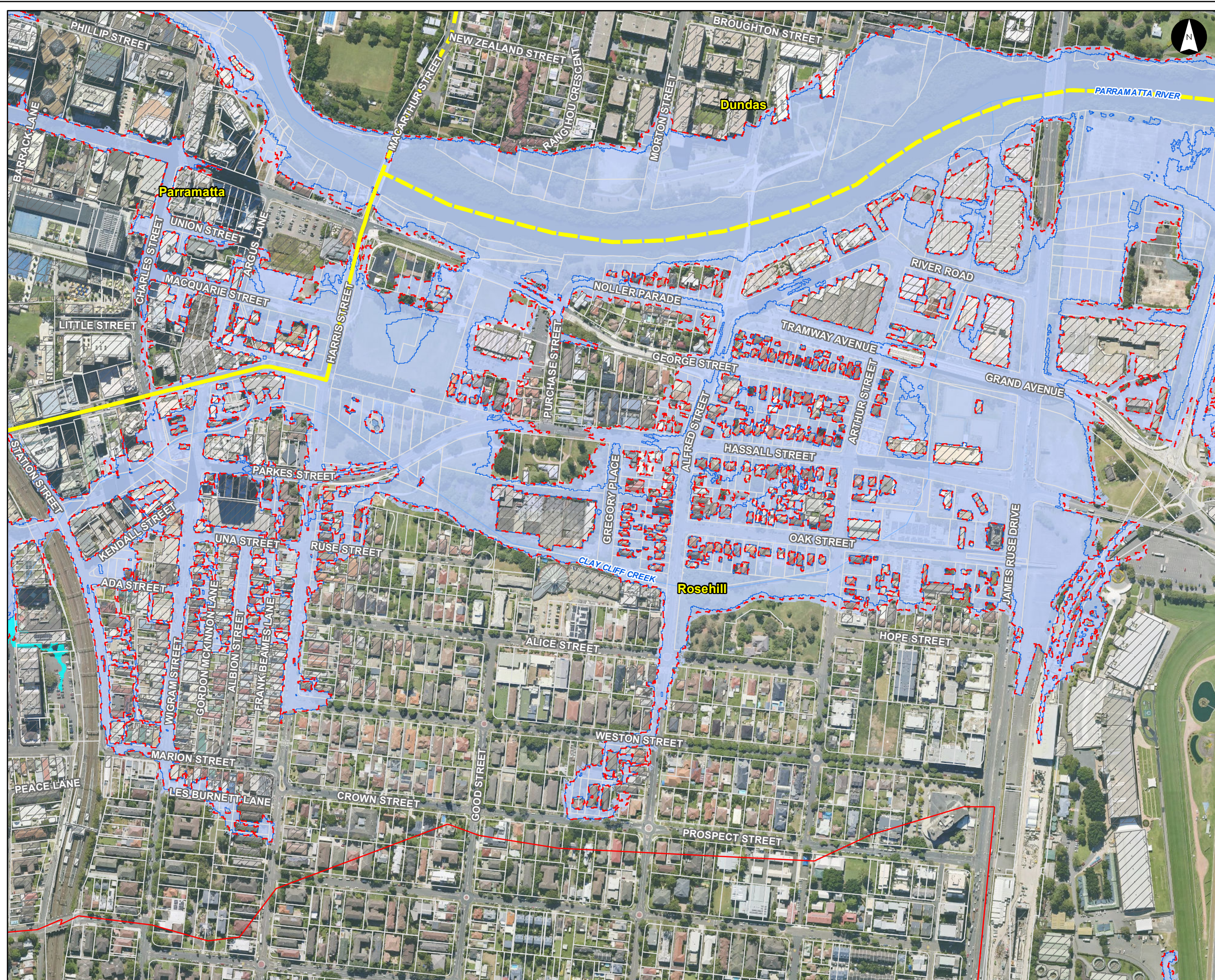
- Notes:
- Coordinate System: GDA 1994 MGA Zone 56
- References:
- Base data supplied by NSW SS and Esri
  - Aerial imagery supplied by MetroMap
  - Cadastre supplied by PCC (2015)
  - Ward boundaries supplied by PCC



Scale at A3 1:5,000







## Flood Planning Areas

Parramatta River Flood Study

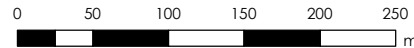
Project Code: 59916074 / 304600102  
Drawn By: ANK  
Map: 59916074-GS-072-FPA.mxd  
Rev: 06  
Date: 2024-04-15

### Legend

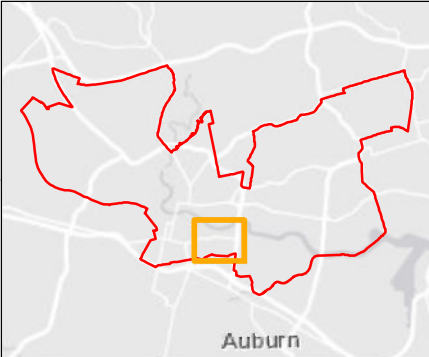
- Study Area
  - Watercourse
  - Cadastre
  - Building Footprint
  - Climate Change Extents
  - Flood Inundation Extents
  - Flood Planning Area
- Local upstream overland flow -  
obtained from preliminary  
ARR87 ROG applied 50mm  
depth filter and without 500mm  
Freeboard

Figure L2.29

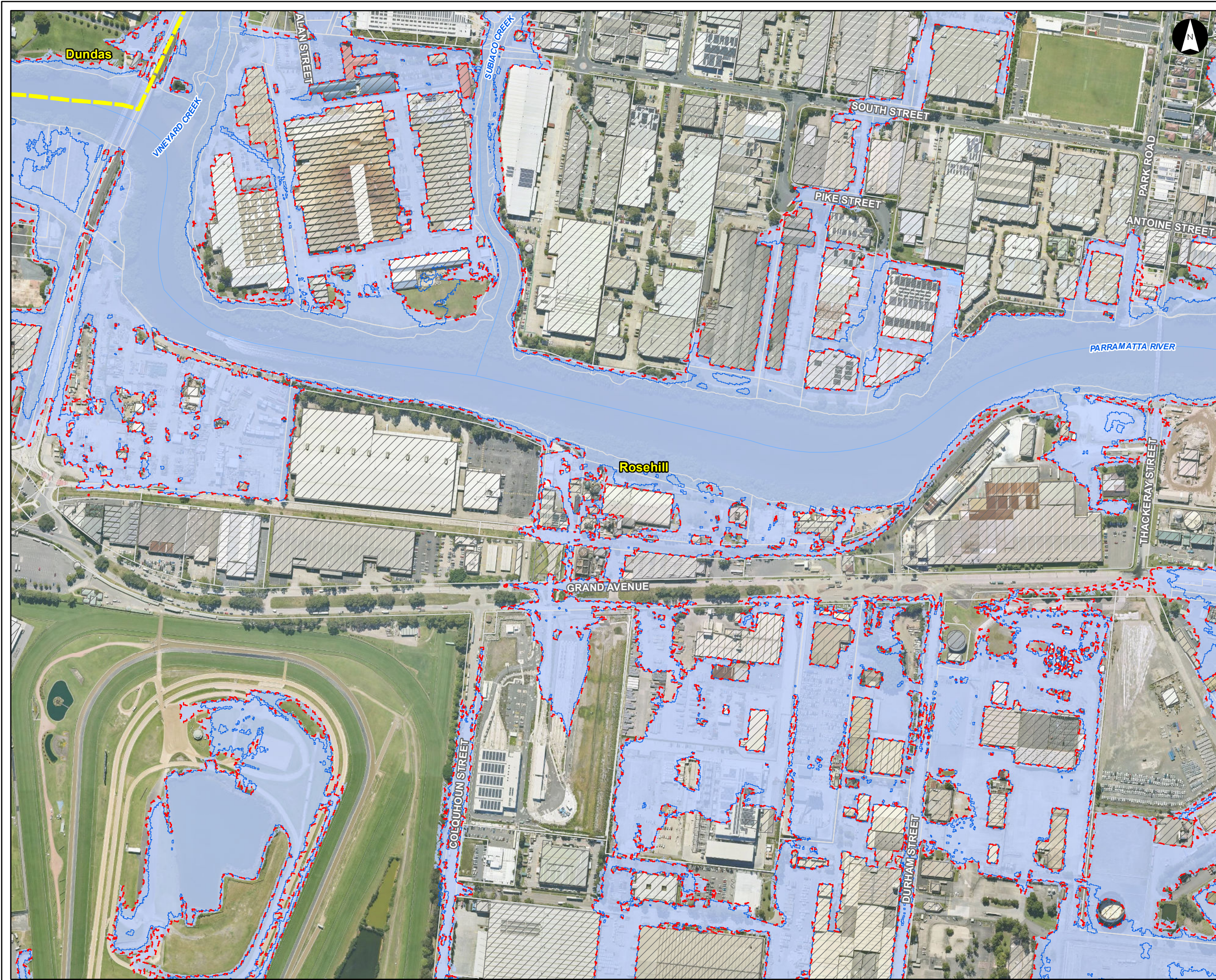
- Notes:
- Coordinate System: GDA 1994 MGA Zone 56
- References:
- Base data supplied by NSW SS and Esri
  - Aerial imagery supplied by MetroMap
  - Cadastre supplied by PCC (2015)
  - Ward boundaries supplied by PCC



Scale at A3 1:5,000







## Flood Planning Areas

Parramatta River Flood Study

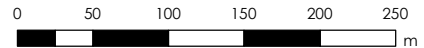
Project Code: 59916074 / 304600102  
Drawn By: ANK  
Map: 59916074-GS-072-FPA.mxd  
Rev: 06  
Date: 2024-04-15

### Legend

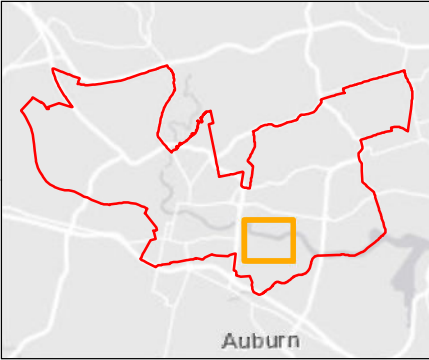
- Study Area
- Watercourse
- Cadastre
- Building Footprint
- Climate Change Extents
- Flood Inundation Extents
- Flood Planning Area
- Local upstream overland flow - obtained from preliminary ARR87 ROG applied 50mm depth filter and without 500mm Freeboard

Figure L2.30

- Notes:
- Coordinate System: GDA 1994 MGA Zone 56
- References:
- Base data supplied by NSW SS and Esri
  - Aerial imagery supplied by MetroMap
  - Cadastre supplied by PCC (2015)
  - Ward boundaries supplied by PCC



Scale at A3 1:5,000







## Flood Planning Areas

Parramatta River Flood Study

Project Code: 59916074 / 304600102  
Drawn By: ANK  
Map: 59916074-GS-072-FPA.mxd  
Rev: 06  
Date: 2024-04-15

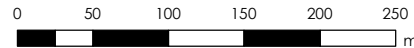
### Legend

- Study Area
- Watercourse
- Cadastre
- Building Footprint
- Climate Change Extents
- Flood Inundation Extents
- Flood Planning Area
- Local upstream overland flow -  
obtained from preliminary  
ARR87 ROG applied 50mm  
depth filter and without 500mm  
Freeboard

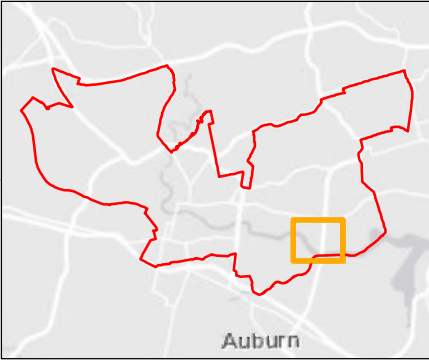
Figure L2.31

Notes:  
1. Coordinate System: GDA 1994 MGA Zone 56

References:  
1. Base data supplied by NSW SS and Esri  
2. Aerial imagery supplied by MetroMap  
3. Cadastre supplied by PCC (2015)  
4. Ward boundaries supplied by PCC



Scale at A3 1:5,000







## Flood Planning Areas

Parramatta River Flood Study

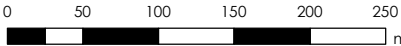
Project Code: 59916074 / 304600102  
Drawn By: ANK  
Map: 59916074-GS-072-FPA.mxd  
Rev: 06  
Date: 2024-04-15

### Legend

- Study Area
- Watercourse
- Cadastre
- Building Footprint
- Climate Change Extents
- Flood Inundation Extents
- Flood Planning Area
- Local upstream overland flow -  
obtained from preliminary  
ARR87 ROG applied 50mm  
depth filter and without 500mm  
Freeboard

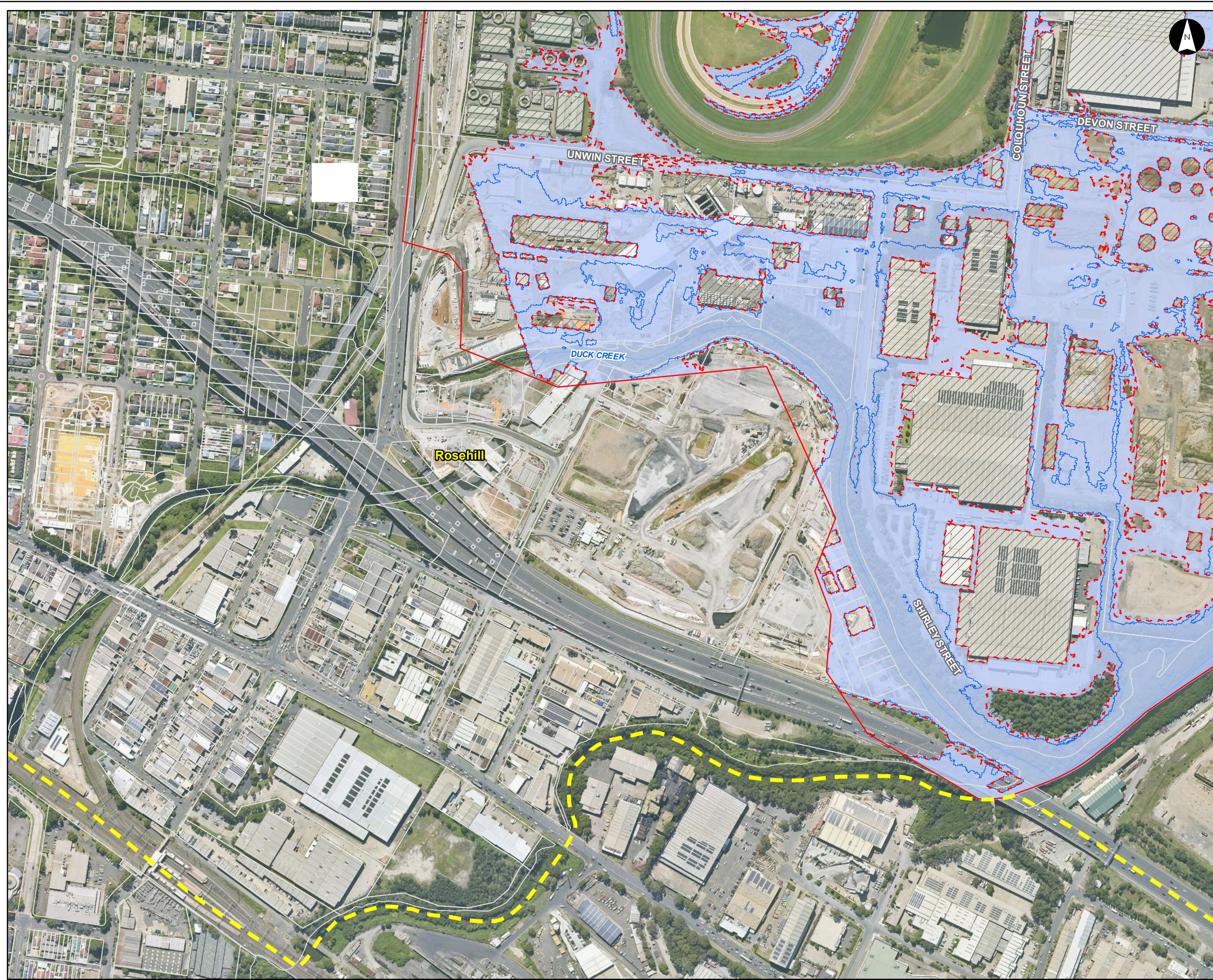
Figure L2.32

- Notes:
- Coordinate System: GDA 1994 MGA Zone 56
- References:
- Base data supplied by NSW SS and Esri
  - Aerial imagery supplied by MetroMap
  - Cadastre supplied by PCC (2015)
  - Ward boundaries supplied by PCC



Scale at A3 1:5,000





Flood Planning Areas

Parramatta River Flood Study

Project Code: 59916074 / 304600102  
Drawn By: ANK  
Map: 59916074-GS-072-FPA.mxd  
Rev: 06  
Date: 2024-04-15

Legend

- Study Area
  - Watercourse
  - Cadastre
  - Building Footprint
  - Climate Change Extents
  - Flood Inundation Extents
  - Flood Planning Area
- Local upstream overland flow -  
obtained from preliminary  
ARR87 ROG applied 50mm  
depth filter and without 500mm  
Freeboard

Figure L2.33

Notes:

1. Coordinate System: GDA 1994 MGA Zone 56

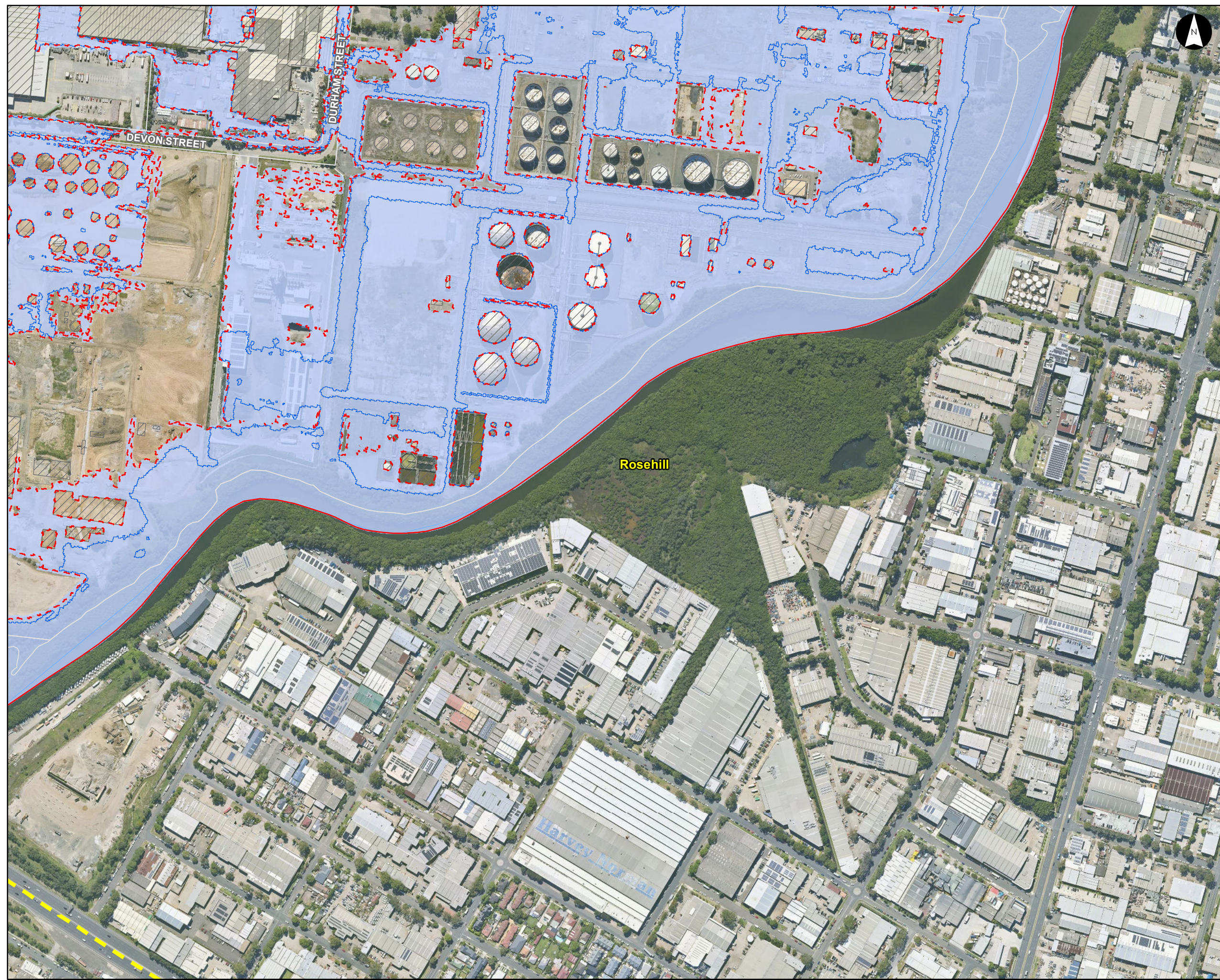
References:

1. Base data supplied by NSW SS and Esri  
2. Aerial imagery supplied by MetroMap  
3. Cadastre supplied by PCC (2015)  
4. Ward boundaries supplied by PCC



Scale at A3 1:5,000





## Flood Planning Areas

Parramatta River Flood Study

Project Code: 59916074 / 304600102  
Drawn By: ANK  
Map: 59916074-GS-072-FPA.mxd  
Rev: 06  
Date: 2024-04-15

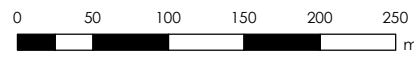
### Legend

- Study Area
- Watercourse
- Cadastre
- Building Footprint
- Climate Change Extents
- Flood Inundation Extents
- Flood Planning Area
- Local upstream overland flow - obtained from preliminary ARR87 ROG applied 50mm depth filter and without 500mm Freeboard

Figure L2.34

Notes:  
1. Coordinate System: GDA 1994 MGA Zone 56

References:  
1. Base data supplied by NSW SS and Esri  
2. Aerial imagery supplied by MetroMap  
3. Cadastre supplied by PCC (2015)  
4. Ward boundaries supplied by PCC



Scale at A3 1:5,000

