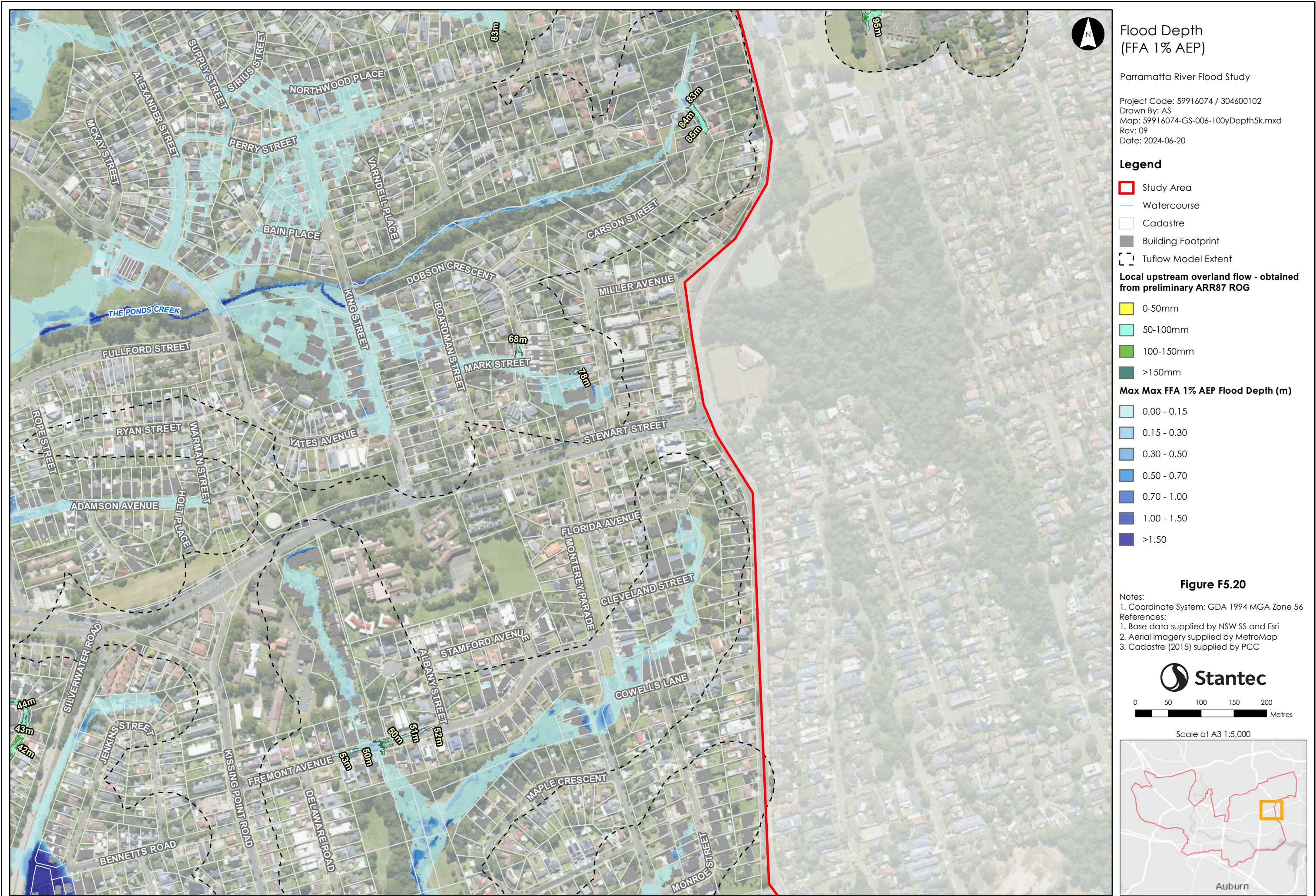
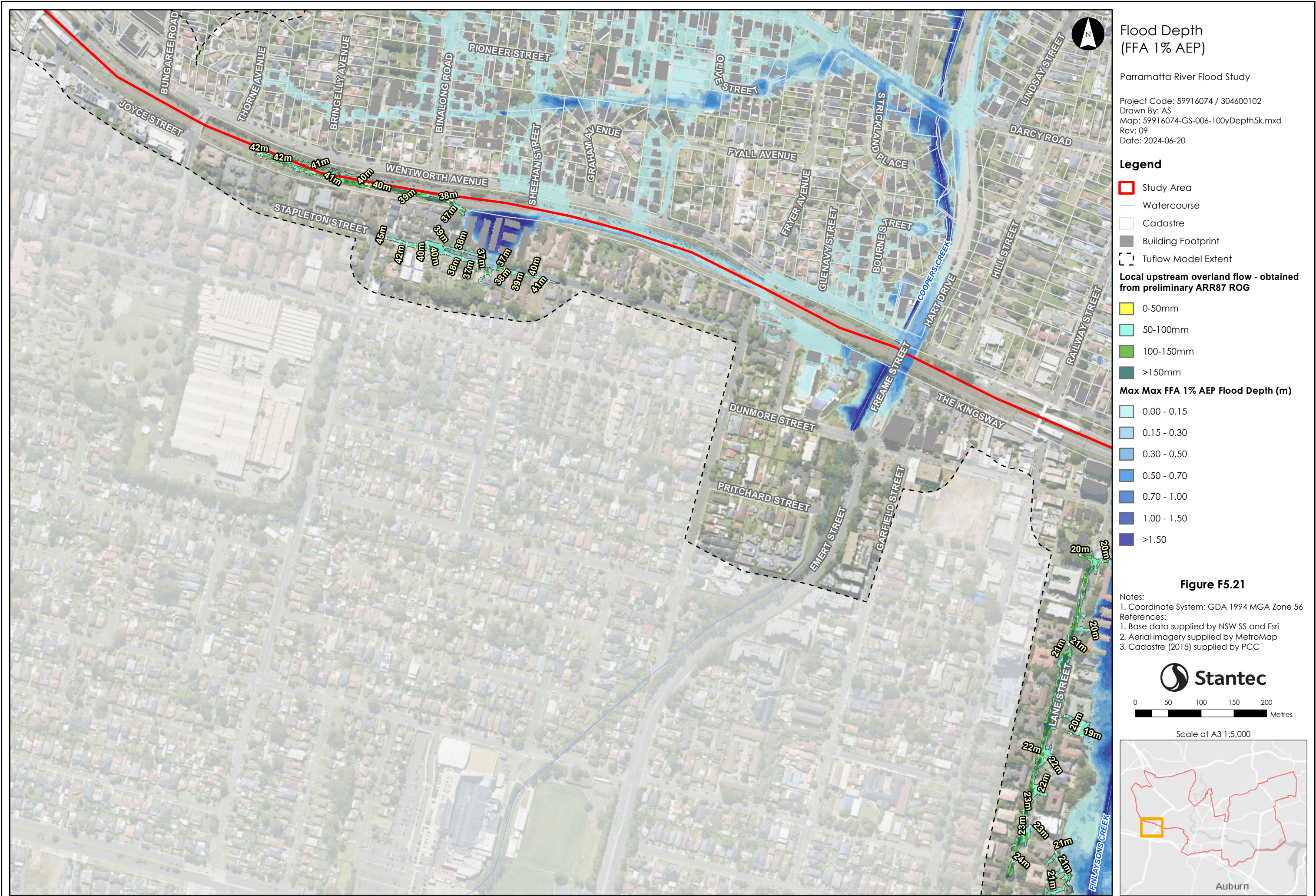
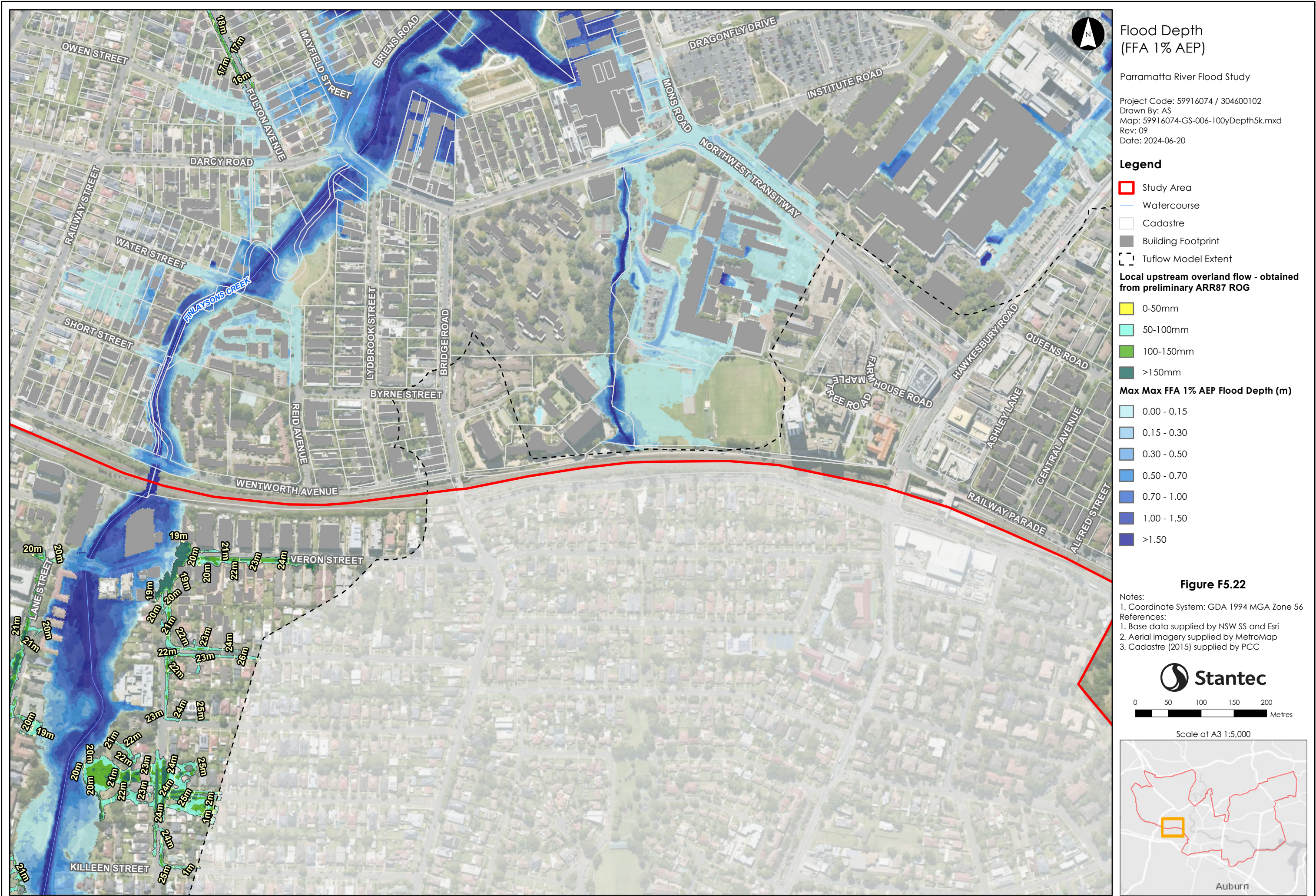


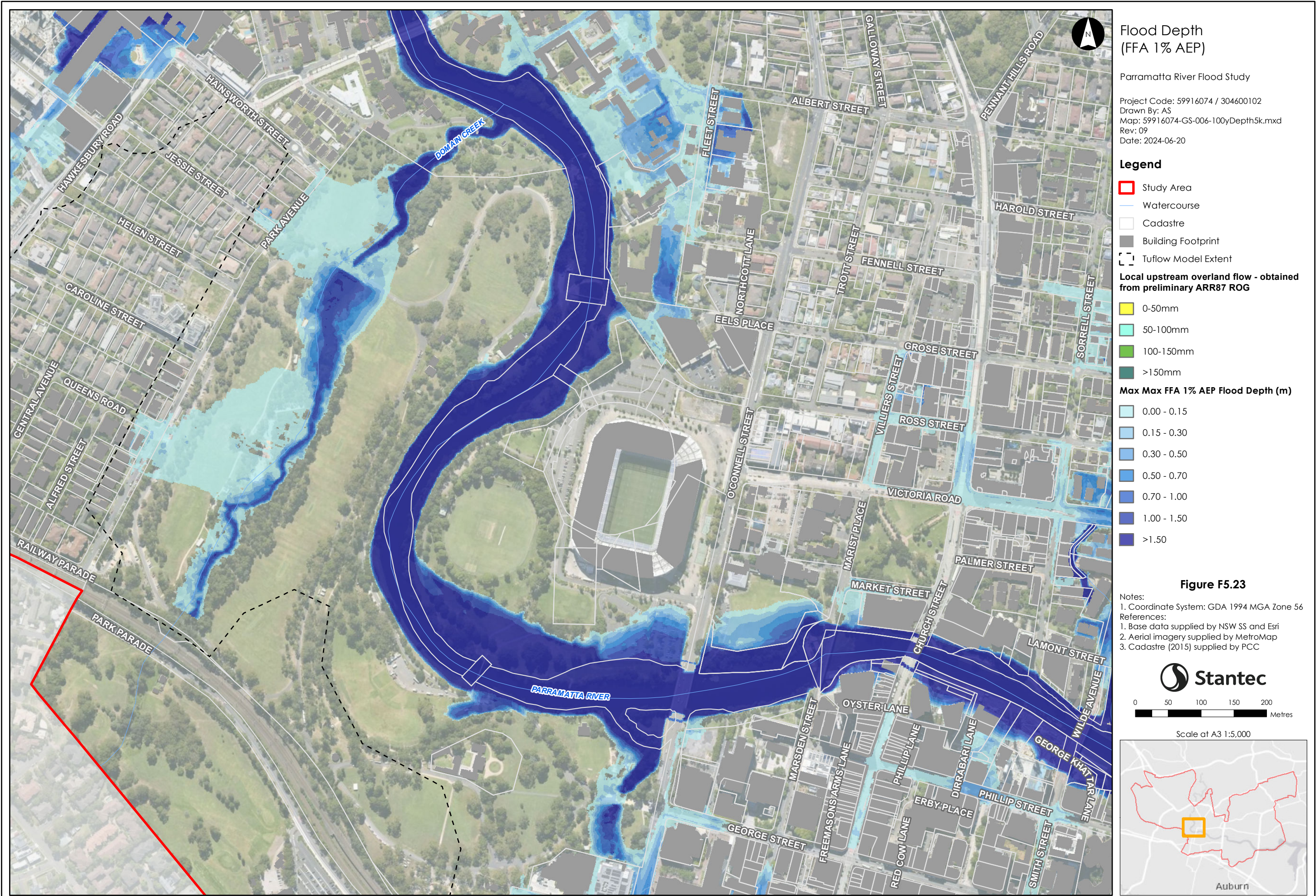
This document has been prepared based on information provided by others as cited in the data sources. Stantec has not verified the accuracy and/or completeness of this information and shall not be responsible for any errors or omissions which may be incorporated herein as a result. Stantec assumes no responsibility for data supplied in electronic format, and the recipient accepts full responsibility for verifying the accuracy and completeness of the data.

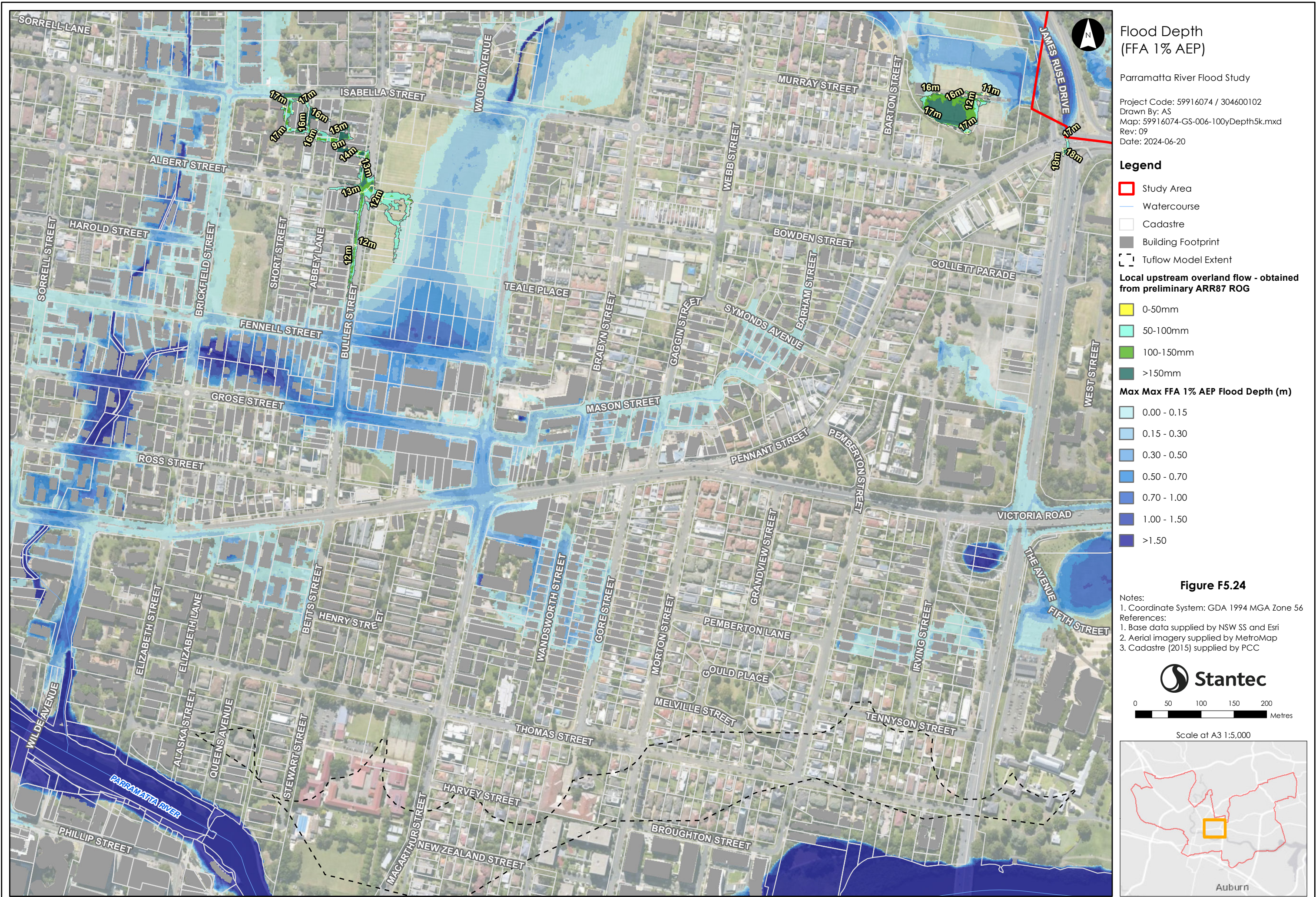


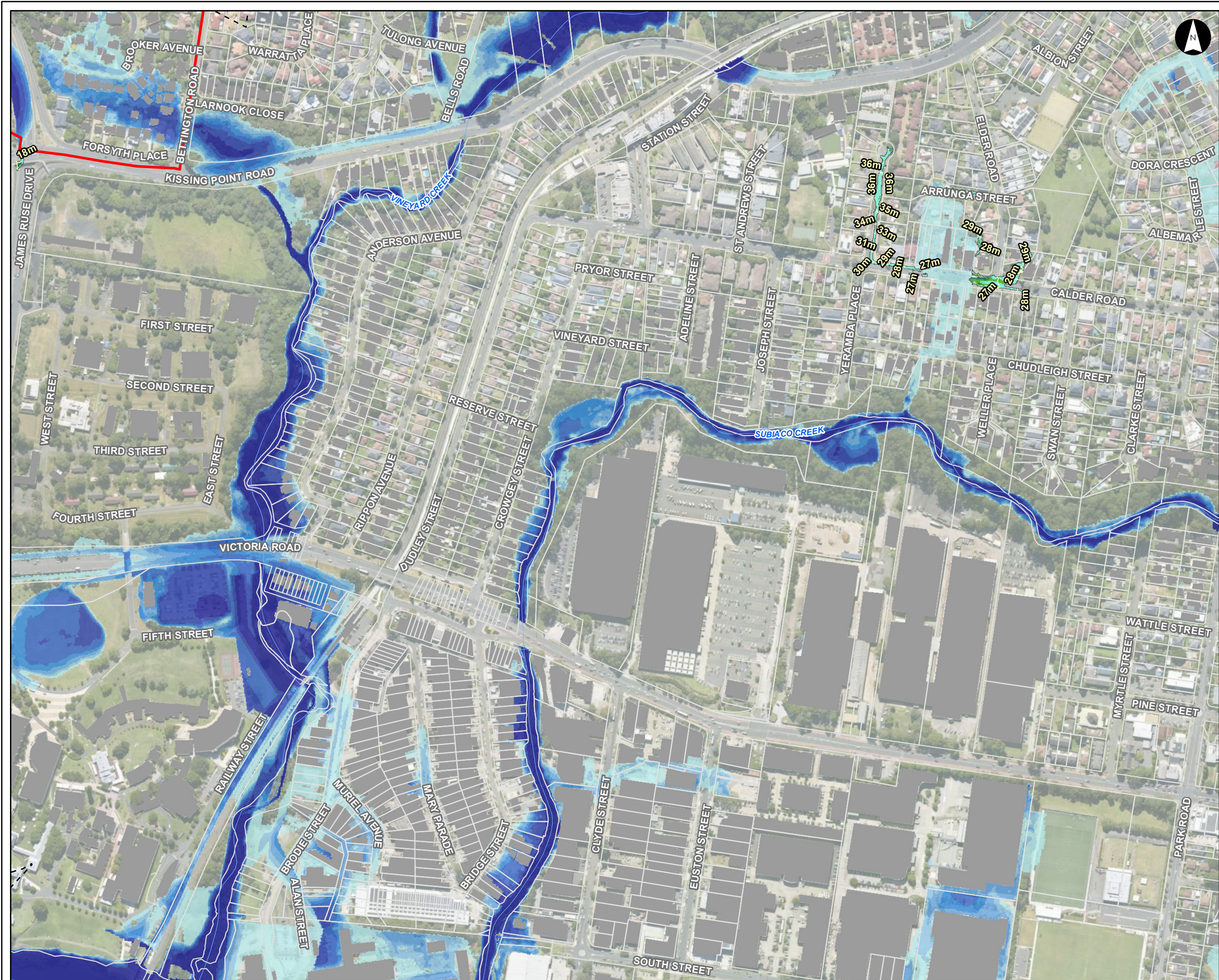
This document has been prepared based on information provided by others as cited in the data sources. Stantec has not verified the accuracy and/or completeness of this information and shall not be responsible for any errors or omissions which may be incorporated herein as a result. Stantec assumes no responsibility for data supplied in electronic format, and the recipient accepts full responsibility for verifying the accuracy and completeness of the data.











Flood Depth
(FFA 1% AEP)

Parramatta River Flood Study

Project Code: 59916074 / 304600102
Drawn By: AS
Map: 59916074-GS-006-100yDepth5k.mxd
Rev: 09
Date: 2024-06-20

Legend

- Study Area
- Watercourse
- Cadastre
- Building Footprint
- Tuflow Model Extent

Local upstream overland flow - obtained from preliminary ARR87 ROG

- 0-50mm
- 50-100mm
- 100-150mm
- >150mm

Max Max FFA 1% AEP Flood Depth (m)

- 0.00 - 0.15
- 0.15 - 0.30
- 0.30 - 0.50
- 0.50 - 0.70
- 0.70 - 1.00
- 1.00 - 1.50
- >1.50


Figure F5.25

Notes:

- Coordinate System: GDA 1994 MGA Zone 56

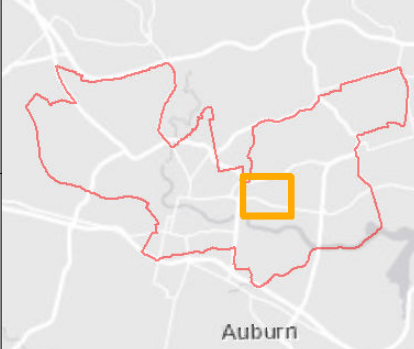
References:

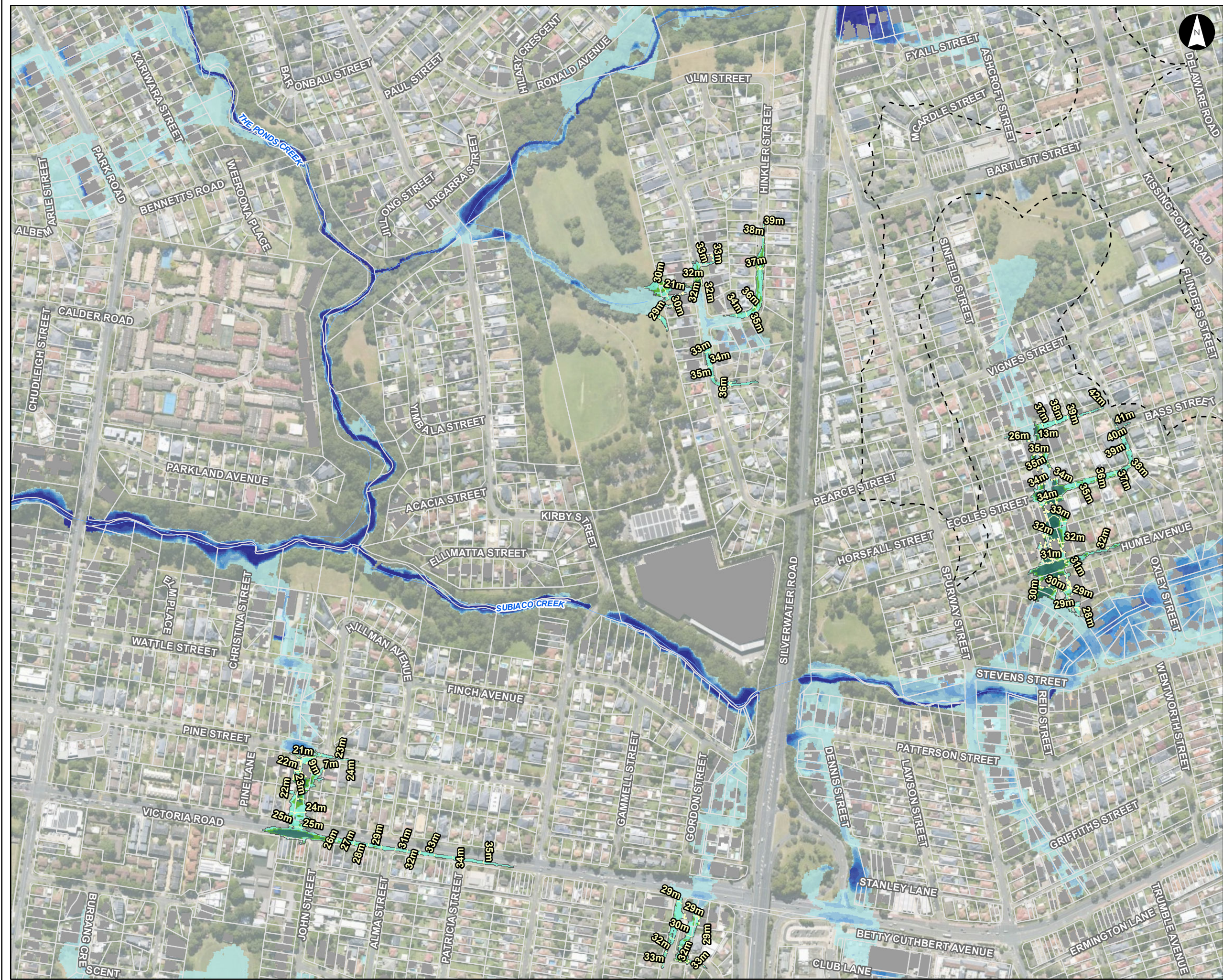
- Base data supplied by NSW SS and Esri
- Aerial imagery supplied by MetroMap
- Cadastre (2015) supplied by PCC

 **Stantec**

0 50 100 150 200 Metres

Scale at A3 1:5,000





Flood Depth
(FFA 1% AEP)

Parramatta River Flood Study

Project Code: 59916074 / 304600102
Drawn By: AS
Map: 59916074-GS-006-100yDepth5k.mxd
Rev: 09
Date: 2024-06-20

Legend

- Study Area
- Watercourse
- Cadastre
- Building Footprint
- Tuflow Model Extent

Local upstream overland flow - obtained from preliminary ARR87 ROG

- 0-50mm
- 50-100mm
- 100-150mm
- >150mm

Max Max FFA 1% AEP Flood Depth (m)

- 0.00 - 0.15
- 0.15 - 0.30
- 0.30 - 0.50
- 0.50 - 0.70
- 0.70 - 1.00
- 1.00 - 1.50
- >1.50


Figure F5.26

Notes:

- Coordinate System: GDA 1994 MGA Zone 56

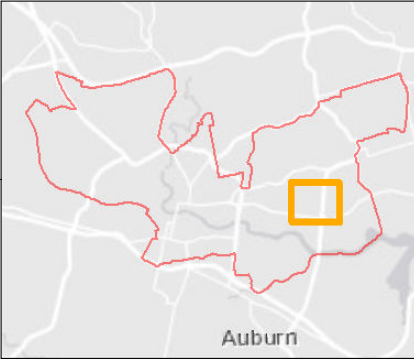
References:

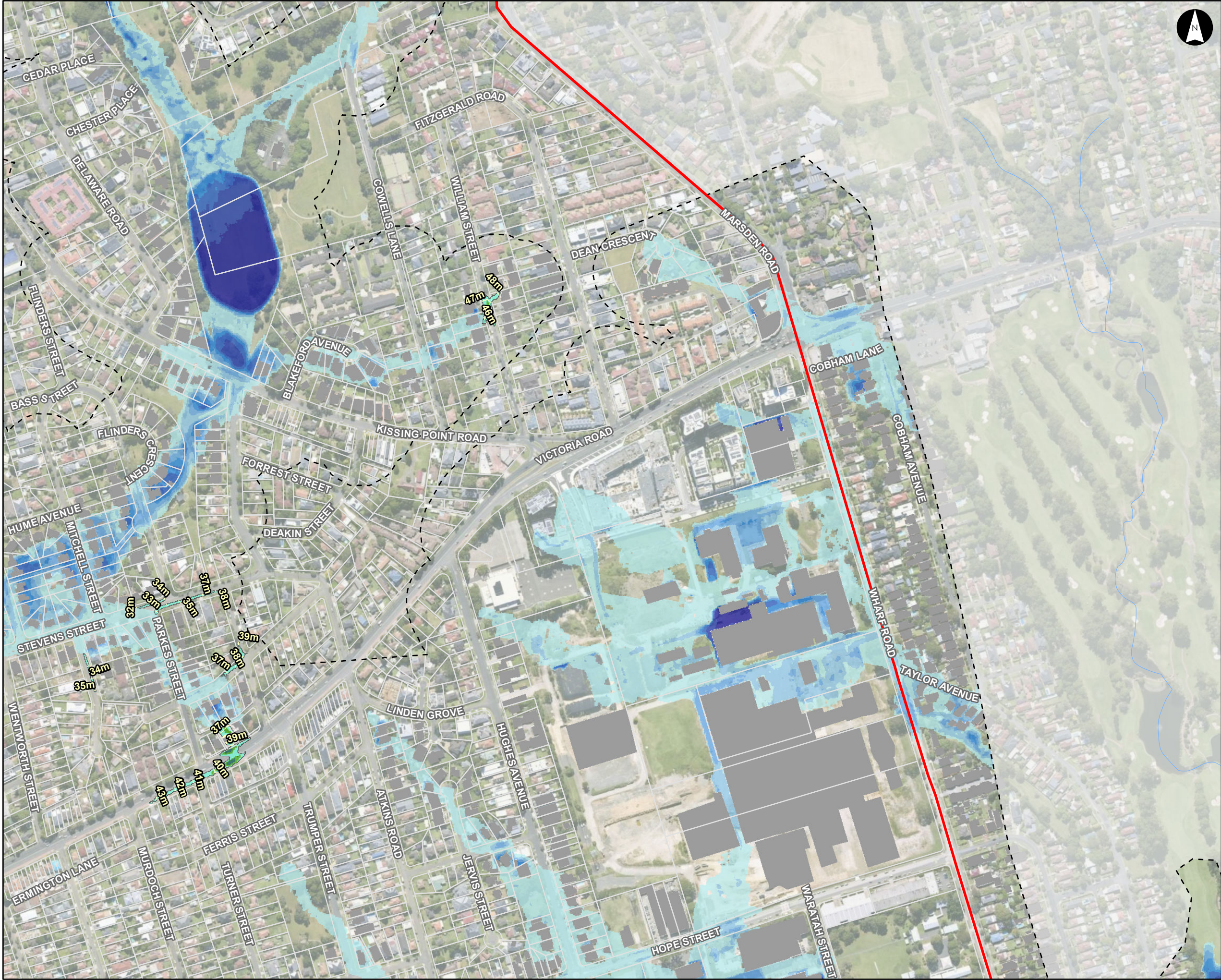
- Base data supplied by NSW SS and Esri
- Aerial imagery supplied by MetroMap
- Cadastre (2015) supplied by PCC

 **Stantec**

0 50 100 150 200 Metres

Scale at A3 1:5,000





**Flood Depth
(FFA 1% AEP)**

Parramatta River Flood Study

Project Code: 59916074 / 304600102
Drawn By: AS
Map: 59916074-GS-006-100yDepth5k.mxd
Rev: 09
Date: 2024-06-20

Legend

- Study Area
- Watercourse
- Cadastre
- Building Footprint
- Tuflow Model Extent

Local upstream overland flow - obtained from preliminary ARR87 ROG

- 0-50mm
- 50-100mm
- 100-150mm
- >150mm

Max Max FFA 1% AEP Flood Depth (m)

- 0.00 - 0.15
- 0.15 - 0.30
- 0.30 - 0.50
- 0.50 - 0.70
- 0.70 - 1.00
- 1.00 - 1.50
- >1.50

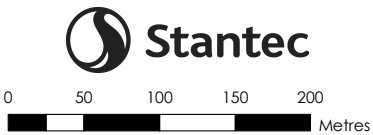
Figure F5.27

Notes:

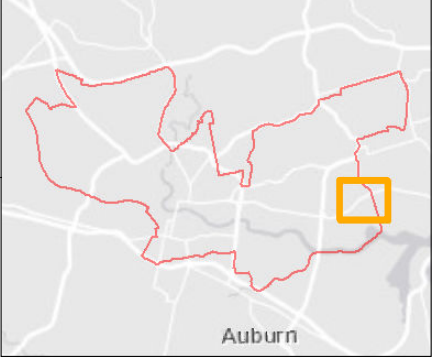
- Coordinate System: GDA 1994 MGA Zone 56

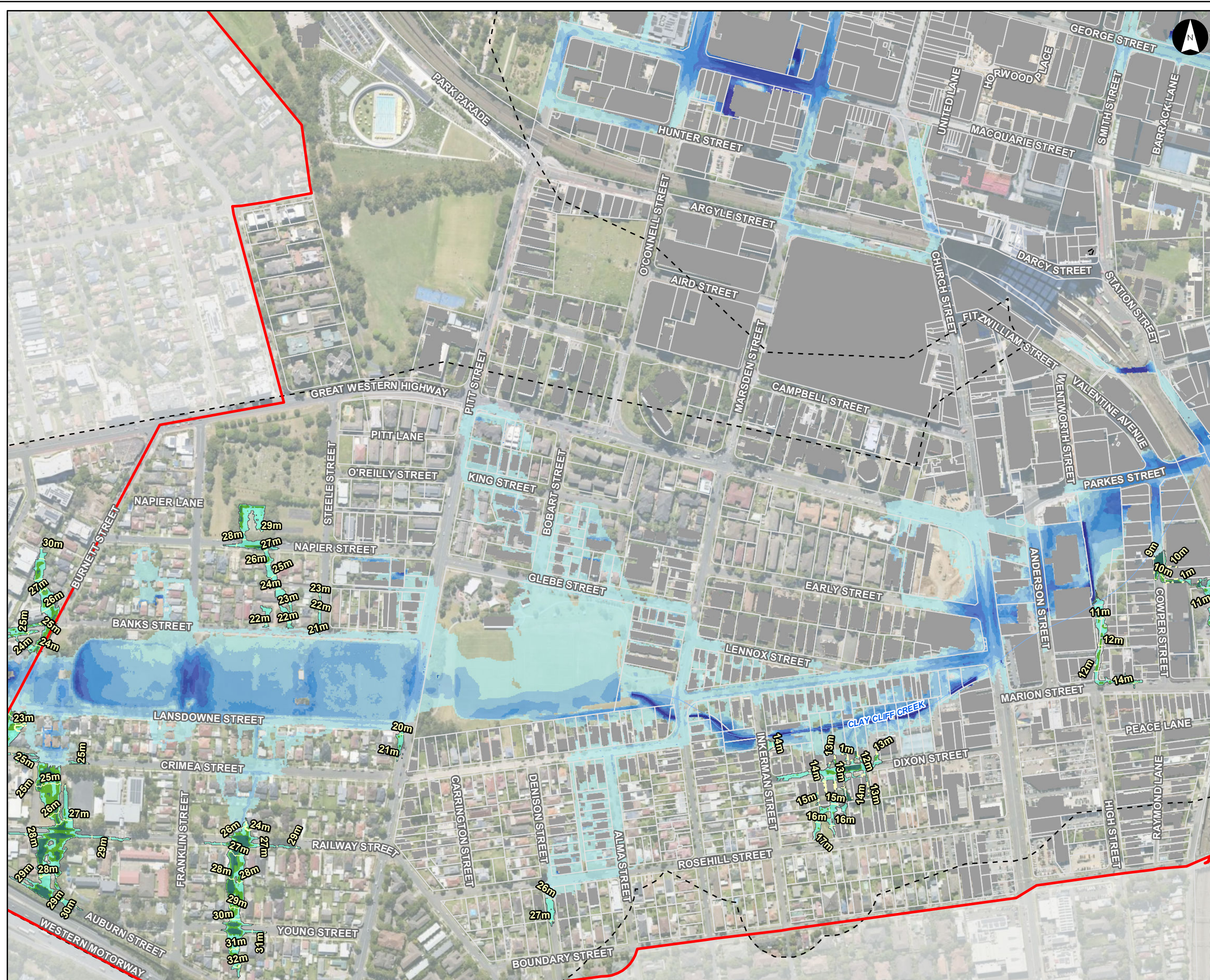
References:

- Base data supplied by NSW SS and Esri
- Aerial imagery supplied by MetroMap
- Cadastre (2015) supplied by PCC



Scale at A3 1:5,000





Flood Depth (FFA 1% AEP)

Parramatta River Flood Study

Project Code: 59916074 / 304600102
Drawn By: AS
Map: 59916074-GS-006-100yDepth5k.mxd
Rev: 09
Date: 2024-06-20

Legend

- Study Area
- Watercourse
- Cadastre
- Building Footprint
- Tuflow Model Extent

Local upstream overland flow - obtained from preliminary ARR87 ROG

- 0-50mm
- 50-100mm
- 100-150mm
- >150mm

Max Max FFA 1% AEP Flood Depth (m)

- 0.00 - 0.15
- 0.15 - 0.30
- 0.30 - 0.50
- 0.50 - 0.70
- 0.70 - 1.00
- 1.00 - 1.50
- >1.50

Figure F5.28

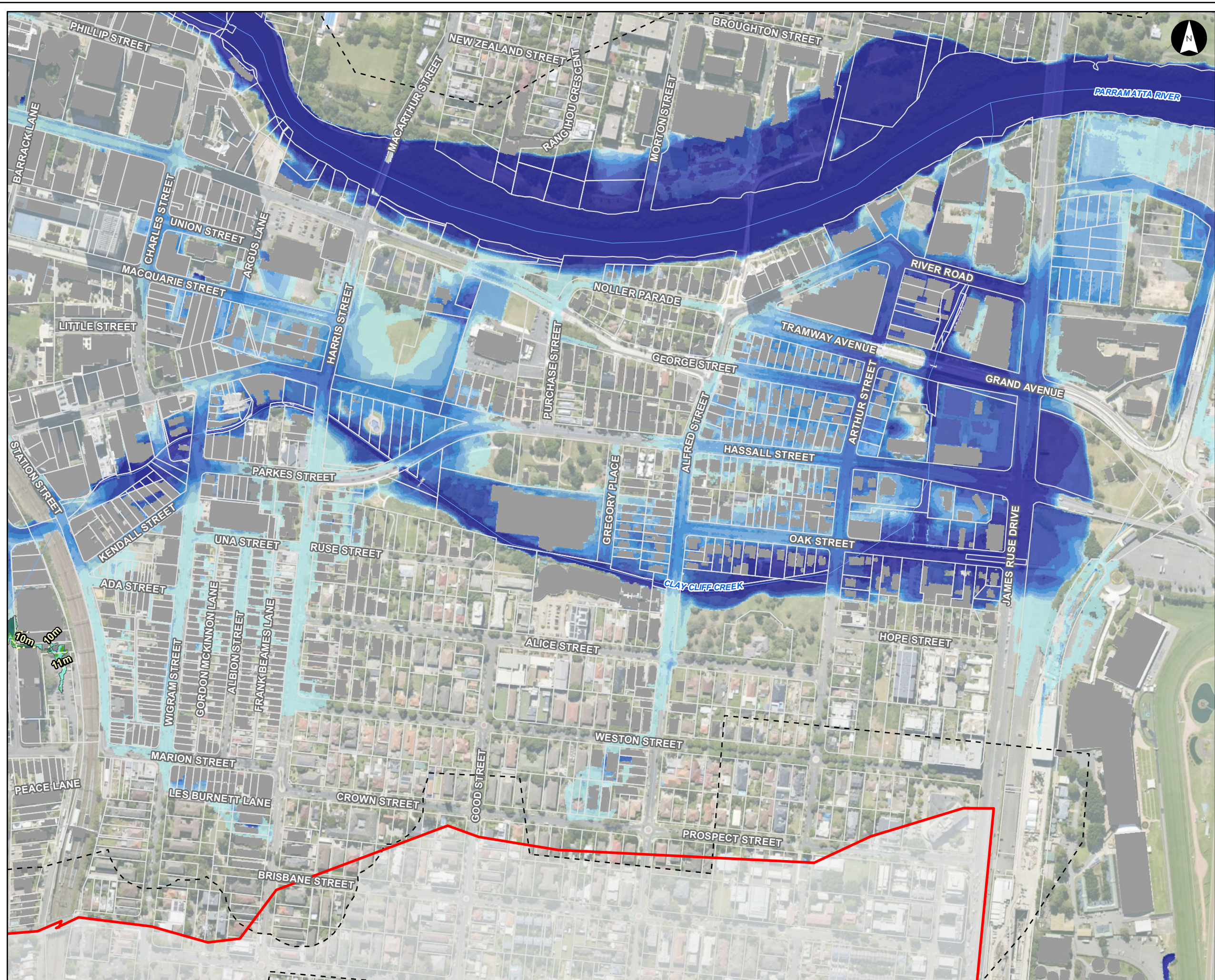
Notes:

- Coordinate System: GDA 1994 MGA Zone 56

References:

- Base data supplied by NSW SS and Esri
- Aerial imagery supplied by MetroMap
- Cadastre (2015) supplied by PCC

Scale at A3 1:5,000



**Flood Depth
(FFA 1% AEP)**

Parramatta River Flood Study

Project Code: 59916074 / 304600102
Drawn By: AS
Map: 59916074-GS-006-100yDepth5k.mxd
Rev: 09
Date: 2024-06-20

Legend

- Study Area
- Watercourse
- Cadastre
- Building Footprint
- Tuflow Model Extent

Local upstream overland flow - obtained from preliminary ARR87 ROG

- 0-50mm
- 50-100mm
- 100-150mm
- >150mm

Max Max FFA 1% AEP Flood Depth (m)

- 0.00 - 0.15
- 0.15 - 0.30
- 0.30 - 0.50
- 0.50 - 0.70
- 0.70 - 1.00
- 1.00 - 1.50
- >1.50


Figure F5.29

Notes:

- Coordinate System: GDA 1994 MGA Zone 56

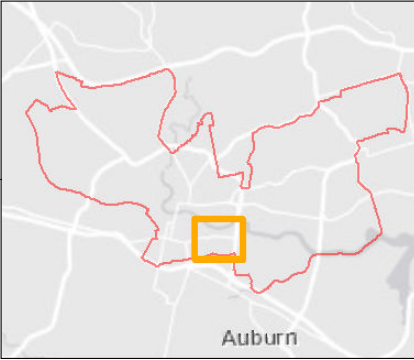
References:

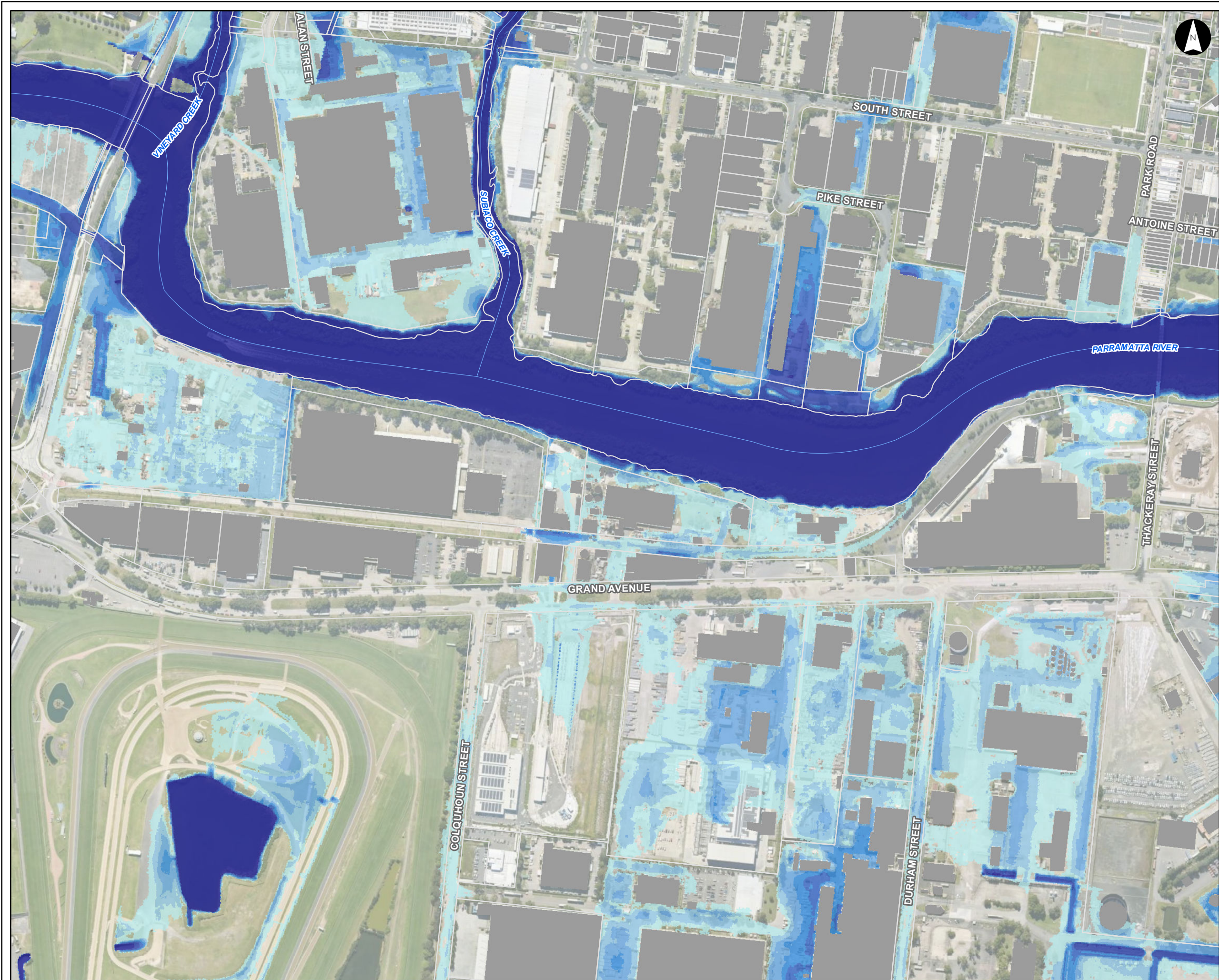
- Base data supplied by NSW SS and Esri
- Aerial imagery supplied by MetroMap
- Cadastre (2015) supplied by PCC

 **Stantec**

0 50 100 150 200 Metres

Scale at A3 1:5,000





Flood Depth
(FFA 1% AEP)

Parramatta River Flood Study

Project Code: 59916074 / 304600102
Drawn By: AS
Map: 59916074-GS-006-100yDepth5k.mxd
Rev: 09
Date: 2024-06-20

Legend

- Study Area
- Watercourse
- Cadastre
- Building Footprint
- Tuflow Model Extent

Local upstream overland flow - obtained from preliminary ARR87 ROG

- 0-50mm
- 50-100mm
- 100-150mm
- >150mm

Max Max FFA 1% AEP Flood Depth (m)

- 0.00 - 0.15
- 0.15 - 0.30
- 0.30 - 0.50
- 0.50 - 0.70
- 0.70 - 1.00
- 1.00 - 1.50
- >1.50

Figure F5.30

Notes:

- Coordinate System: GDA 1994 MGA Zone 56

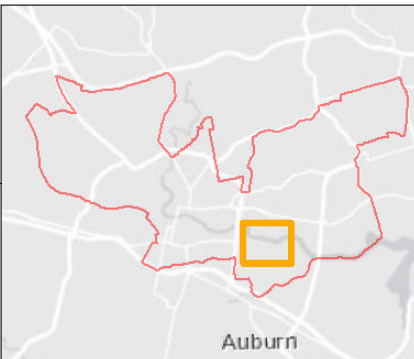
References:

- Base data supplied by NSW SS and Esri
- Aerial imagery supplied by MetroMap
- Cadastre (2015) supplied by PCC

Stantec

0 50 100 150 200 Metres

Scale at A3 1:5,000





Flood Depth (FFA 1% AEP)

Parramatta River Flood Study

Project Code: 59916074 / 304600102
Drawn By: AS
Map: 59916074-GS-006-100yDepth5k.mxd
Rev: 09
Date: 2024-06-20

Legend

- Study Area
- Watercourse
- Cadastre
- Building Footprint
- Tuflow Model Extent

Local upstream overland flow - obtained from preliminary ARR87 ROG

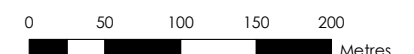
- 0-50mm
- 50-100mm
- 100-150mm
- >150mm

Max Max FFA 1% AEP Flood Depth (m)

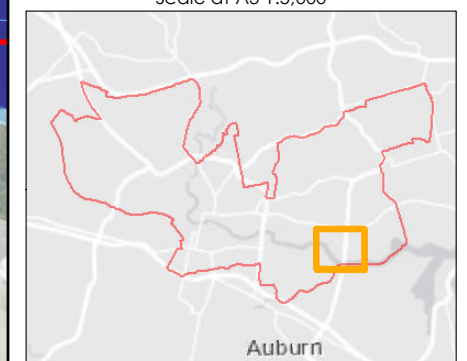
- 0.00 - 0.15
- 0.15 - 0.30
- 0.30 - 0.50
- 0.50 - 0.70
- 0.70 - 1.00
- 1.00 - 1.50
- >1.50

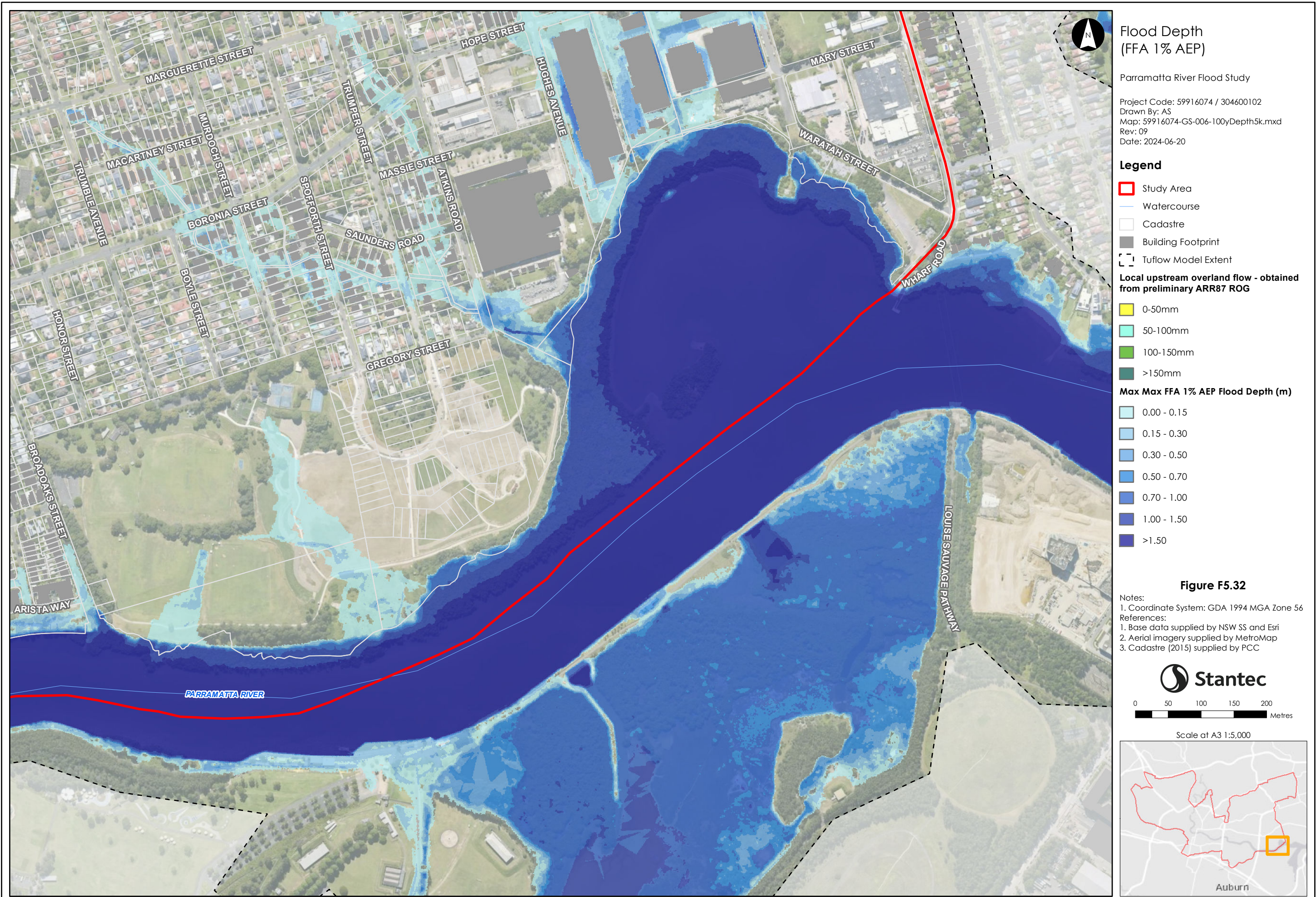
Figure F5.31

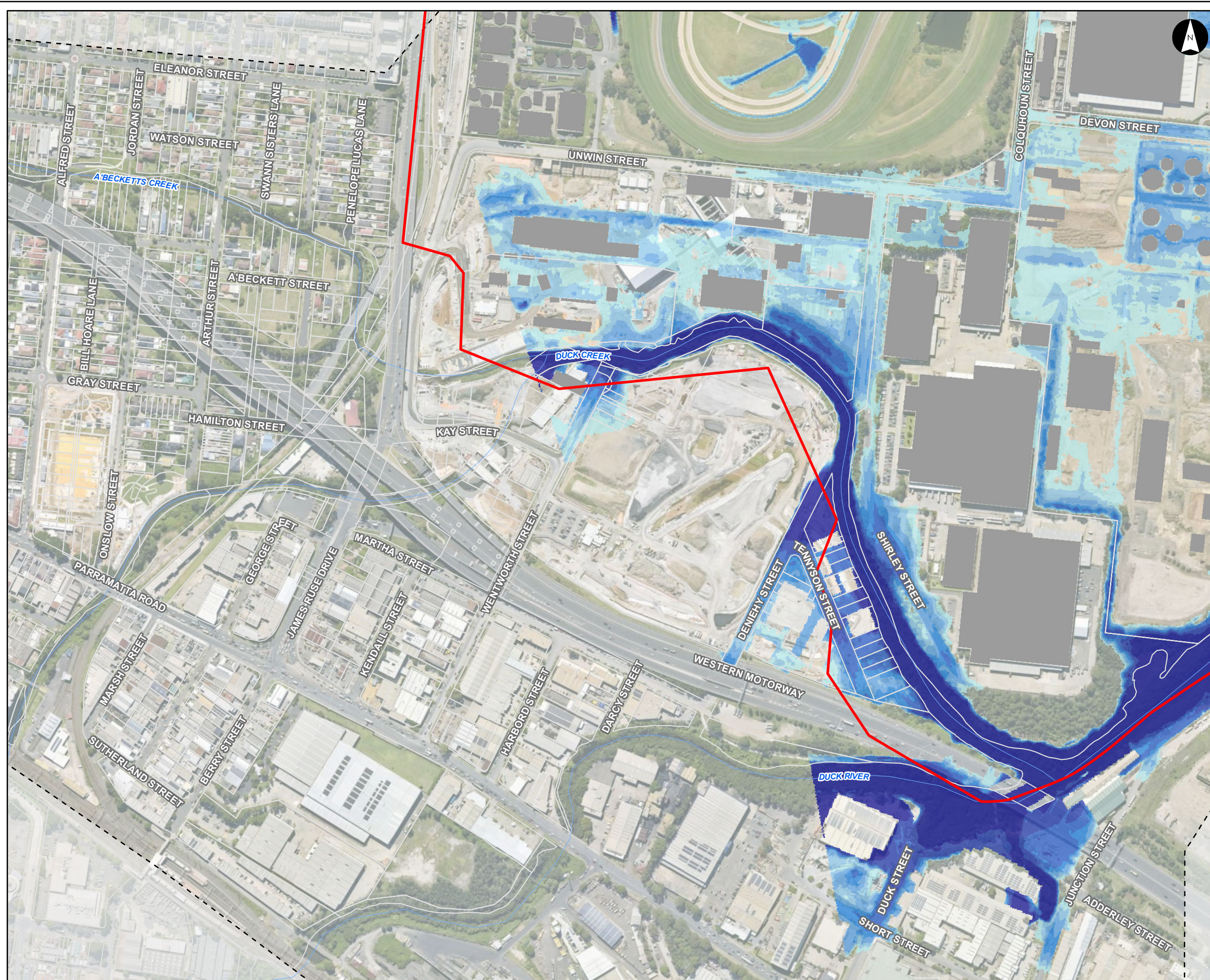
- Notes:
- Coordinate System: GDA 1994 MGA Zone 56
- References:
- Base data supplied by NSW SS and Esri
 - Aerial imagery supplied by MetroMap
 - Cadastre (2015) supplied by PCC



Scale at A3 1:5,000







**Flood Depth
(FFA 1% AEP)**

Parramatta River Flood Study

Project Code: 59916074 / 304600102
Drawn By: AS
Map: 59916074-GS-006-100yDepth5k.mxd
Rev: 09
Date: 2024-06-20

Legend

- Study Area
- Watercourse
- Cadastre
- Building Footprint
- Tuflow Model Extent

Local upstream overland flow - obtained from preliminary ARR87 ROG

- 0-50mm
- 50-100mm
- 100-150mm
- >150mm

Max Max FFA 1% AEP Flood Depth (m)

- 0.00 - 0.15
- 0.15 - 0.30
- 0.30 - 0.50
- 0.50 - 0.70
- 0.70 - 1.00
- 1.00 - 1.50
- >1.50

Figure F5.33

Notes:
1. Coordinate System: GDA 1994 MGA Zone 56

References:
1. Base data supplied by NSW SS and Esri
2. Aerial imagery supplied by MetroMap
3. Cadastre (2015) supplied by PCC

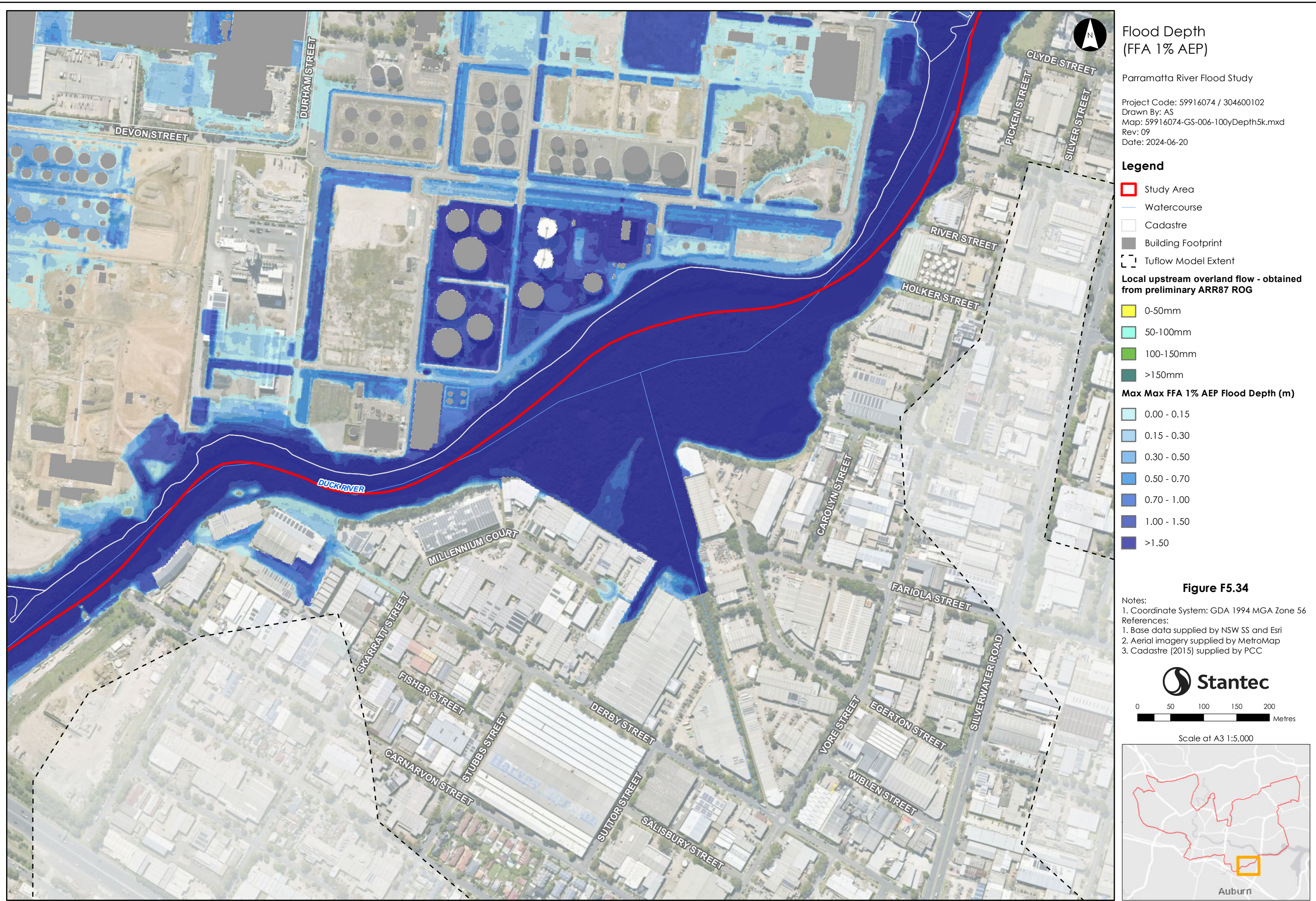
Stantec

0 50 100 150 200 Metres

Scale at A3 1:5,000

Auburn

This document has been prepared based on information provided by others as cited in the data sources. Stantec has not verified the accuracy and/or completeness of this information and shall not be responsible for any errors or omissions which may be incorporated herein as a result. Stantec assumes no responsibility for data supplied in electronic format, and the recipient accepts full responsibility for verifying the accuracy and completeness of the data.



This document has been prepared based on information provided by others as cited in the data sources. Stantec has not verified the accuracy and/or completeness of this information and shall not be responsible for any errors or omissions which may be incorporated herein as a result. Stantec assumes no responsibility for data supplied in electronic format, and the recipient accepts full responsibility for verifying the accuracy and completeness of the data.